

# ATLAS LED

GENERAL CARD



## TECHNICAL PARAMETERS

<b>Ingress protection:</b>	IP65
<b>Impact resistance:</b>	IK09
<b>Nominal power [W]:</b>	36.00 - 57.00
<b>Luminous flux [lm]*:</b>	4400 - 7320
<b>Colour temperature [K]:</b>	4000
<b>Colour rendering index:</b>	>80
<b>SDCM:</b>	≤ 5
<b>Energy efficiency class:</b>	D; E
<b>Material of the body:</b>	PC
<b>Diffuser material:</b>	PC
<b>Diffuser type:</b>	MAT; transparent
<b>Mounting version:</b>	surface, suspended
<b>Dimensions (H/W/T/S) [mm]:</b>	1152/85/80; 1432/85/80;
<b>Warranty [years]:</b>	5

## CHARACTERISTICS

ATLAS LED is a fitting with very high IP65 tightness and IK09 mechanical resistance. The solution based on integration of the diffuser and LED module is applied in the fitting. The fitting has a lot of facilities making the mounting easier and faster: the system of diffuser suspension, adjustable mounting brackets ensuring the mounting tolerance +/-50mm. Standard equipment of the fitting: clips made of stainless steel (INOX).

## APPLICATION

A multipurpose LED fitting intended for using in the areas where high dust and moisture resistance is required. Highly recommended to be used in industrial buildings, warehouses, car parks (underground and multilevel), sports stadiums, transport terminals and underground passageways. Its construction is intended both for surface and suspended mounting. Adjustable mounting brackets (the mounting tolerance +/-40mm). Suspended diffuser integrated with LED modules. The luminaire is intended for general areas inside buildings – store rooms and storage rack areas as well as cold stores included in tables 5.4 and 5.5 of the EN12464 standard; for indoor traffic zones included in table 5.1 of the EN12464 standard and for parking areas and as lighting of railway installations included in table 5.34 and 5.53 of the EN12464 standard, excluding ticket and luggage offices, counters, waiting rooms, entrance halls and lounges.

# ATLAS LED

## GENERAL CARD

## AVAILABLE VERSIONS



Click index >>, to see details

### ATLAS LED 36W

Nominal power [W]	Colour temperature [K]	Luminous flux [lm]*	Diffuser type	Dimensions (H/W/T/S) [mm]	Energy efficiency class	Index
36	4000	4400	MAT	1152/85/80	E	<a href="#">&gt;&gt; 952043</a>
36	4000	4500	transparent	1152/85/80	E	<a href="#">&gt;&gt; 952005</a>

### ATLAS LED 44W

Nominal power [W]	Colour temperature [K]	Luminous flux [lm]*	Diffuser type	Dimensions (H/W/T/S) [mm]	Energy efficiency class	Index
44	4000	5620	MAT	1152/85/80	E	<a href="#">&gt;&gt; 657399</a>
44	4000	5850	transparent	1152/85/80	D	<a href="#">&gt;&gt; 657351</a>

### ATLAS LED 47W

Nominal power [W]	Colour temperature [K]	Luminous flux [lm]*	Diffuser type	Dimensions (H/W/T/S) [mm]	Energy efficiency class	Index
47	4000	6000	transparent	1432/85/80	E	<a href="#">&gt;&gt; 952012</a>

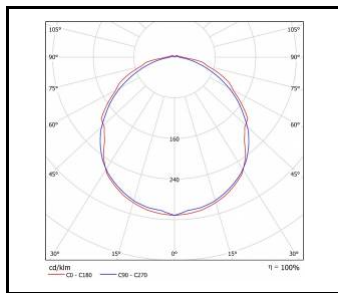
### ATLAS LED 57W

Nominal power [W]	Colour temperature [K]	Luminous flux [lm]*	Diffuser type	Dimensions (H/W/T/S) [mm]	Energy efficiency class	Index
57	4000	7020	MAT	1432/85/80	E	<a href="#">&gt;&gt; 657405</a>
57	4000	7320	transparent	1432/85/80	E	<a href="#">&gt;&gt; 657368</a>

# ATLAS LED

GENERAL CARD

## LUMINOUS INTENSITY DISTRIB. CURVE



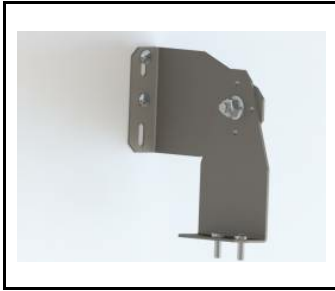
ATLAS LED

## ACCESSORIES AVAILABLE

index	Name
908200	TYTAN LED. ATLAS LED. INDUSTRY LED - adjustable handle (set of 2)
<a href="#">907913</a>	TYTAN LED. ATLAS LED - protective grid 1152mm
907920	TYTAN LED. ATLAS LED - protective grid 1432mm
952029	ATLAS LED 1150mm 4500lm 840 - lighting module
952036	ATLAS LED 1450mm 6000lm 840 - lighting module
952074	ATLAS LED 1450mm 5900lm 840 MAT - lighting module
952067	ATLAS LED 1150mm 4400lm 840 MAT - lighting module
16000507	Breathable gland gray M20*1.5 IP68
60000006	M16 stuffing box plug various PA black M-16 - BPM-21
80000378	Cable gland PG 13.5 Titanium PA 6.6 gray with nut
	ATLAS LED 1150mm 5620lm 840 MAT - light module
	ATLAS LED 1150mm 5850lm 840 - light module
	ATLAS LED 1450mm 7020lm 840 MAT - light module
	ATLAS LED 1450mm 7320lm 840 - light module

# ATLAS LED

## GENERAL CARD



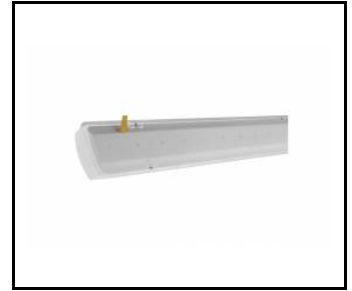
TYTAN LED. ATLAS LED. INDUSTRY LED - adjustable handle (set of 2) (908200)



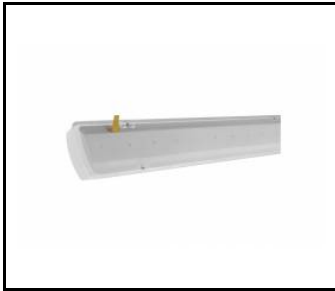
TYTAN LED. ATLAS LED - protective grid 1152mm (907913)



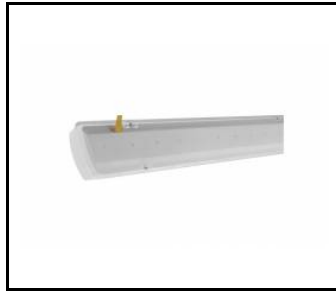
TYTAN LED. ATLAS LED - protective grid 1432mm (907920)



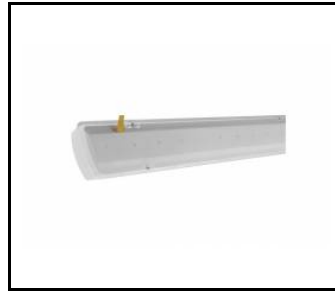
ATLAS LED 1150mm 4500lm 840 - lighting module (952029)



ATLAS LED 1450mm 6000lm 840 - lighting module (952036)



ATLAS LED 1450mm 5900lm 840 MAT - lighting module (952074)



ATLAS LED 1150mm 4400lm 840 MAT - lighting module (952067)



Breathable gland gray M20\*1.5 IP68 (16000507)



M16 stuffing box plug various PA black M-16 - BPM-21 (60000006)



ATLAS LED 1150mm 5620lm 840 MAT - light module (657412)



ATLAS LED 1150mm 5850lm 840 - light module (657375)



ATLAS LED 1450mm 7020lm 840 MAT - light module (657429)



ATLAS LED 1450mm 7320lm 840 - light module (657382)

Card creation date: 23 September 2021

The company reserves the right to make design changes or upgrades in the presented product. Product data sheet does not constitute an offer. \* Parameter tolerance is +/- 10%

 This product is a subject to electric and electronic waste equipment regulations (WEEE).

 Certificate CE - Nr: 83/2019