

# TIARA 2 LED L

GENERAL CARD



## TECHNICAL PARAMETERS

<b>Ingress protection:</b>	IP66
<b>Impact resistance:</b>	IK10
<b>Rated power of the luminaire [W]*:</b>	49.00 - 330.00
<b>Luminous flux [lm]*:</b>	8750 - 49574
<b>Colour temperature [K]:</b>	4000
<b>Color rendering index (Ra) &gt;:</b>	70
<b>Electrical protection class:</b>	II
<b>Optics:</b>	RM7; RM7HE
<b>Control:</b>	Yes + 5-stage power reduction
<b>Colour of the body:</b>	grey
<b>Luminous efficacy [lm/W]:</b>	145.00 - 189.00
<b>Energy efficiency class:</b>	A; B; C
<b>Material of the body:</b>	powder coated aluminium
<b>Diffuser type:</b>	transparent
<b>Diffuser material:</b>	szkło hartowane 5mm
<b>Optics material:</b>	PMMA; PMMA + PC
<b>SDCM:</b>	5

## CHARACTERISTICS

TIARA 2 LED L a family of LED road luminaires based on a proven form factor. It uses directional multi-lens matrices, made of PMMA, with each lens having the same optics, ensuring that the luminous characteristics remain constant over time. Components from renowned manufacturers and new LED panels contribute to the very high luminous efficacy achieved at the output of the luminaire - reaching 181 lm/W. The two-chamber construction of the luminaire maintains the tightness of the optical chamber during assembly work and allows tool-free access to the electrical equipment chamber. The upper part of the luminaire, has dedicated hinges and a safety cord. Using standard tools, quick and convenient servicing is possible, allowing the replacement of any component without having to dismantle the entire luminaire and make soldered connections. The body and handle are made of die-cast aluminium, powder-coated grey, and have a very high IP66 protection rating and IK09 mechanical impact resistance. Standard features: ergonomic light module suspension system; fully programmable DALI driver; CLO constant lumen maintenance and autonomous 5-stage power reduction functions available; NTC overheating protection; filter to prevent condensation; connection terminals; tool-free access. Additional options: NEMA, ZHAGA connectors; interfacing with control systems, RCR motion sensor; additional SP10kV protection outside the power supply, on/off power supply without power reduction function; knife disconnecter to disconnect voltage if the electrical compartment is opened; design with cable terminated with quick disconnect; painting in any RAL colour. Certifications: CE, RoHS, ENEC, ENEC+, Zhaga D4i.

## APPLICATION

Thanks to the use of dedicated optics, it is possible to illuminate objects such as: motorways, motorways, national roads, voivodeships, districts, communes, municipalities, housing estates, area lighting. Optics are also available to illuminate: pedestrian crossings, pavements and cycle paths.

# TIARA 2 LED L

GENERAL CARD

## AVAILABLE VERSIONS



Click index >>, to see details

### TIARA 2 LED L

Rated power of the luminaire [W]*	Luminous flux [lm]*	Luminous efficacy [lm/W]	Energy efficiency class	Colour temperature [K]	Color rendering index (Ra) >	Electrical protection class	Optics	DIMM DALI	Index
69	12125	175	B	4000	70	II	RM7	yes	<a href="#">&gt;&gt; 761805</a>
73	12800	175	B	4000	70	II	RM7	yes	<a href="#">&gt;&gt; 761720</a>
76	13225	174	B	4000	70	II	RM7	yes	<a href="#">&gt;&gt; 761812</a>
78	13600	174	B	4000	70	II	RM7	yes	<a href="#">&gt;&gt; 761737</a>
85	14900	175	B	4000	70	II	RM7	yes	<a href="#">&gt;&gt; 761829</a>
140	24100	172	B	4000	70	II	RM7	yes	<a href="#">&gt;&gt; 761836</a>
145	24675	170	B	4000	70	II	RM7	yes	<a href="#">&gt;&gt; 761744</a>
150	25450	169	B	4000	70	II	RM7	yes	<a href="#">&gt;&gt; 761843</a>
155	26525	171	B	4000	70	II	RM7	yes	<a href="#">&gt;&gt; 761850</a>
165	27425	166	B	4000	70	II	RM7	yes	<a href="#">&gt;&gt; 761867</a>
170	26300	154	B	4000	70	II	RM7	yes	<a href="#">&gt;&gt; 761874</a>
180	27400	152	B	4000	70	II	RM7	yes	<a href="#">&gt;&gt; 761881</a>
190	28925	152	B	4000	70	II	RM7	yes	<a href="#">&gt;&gt; 761898</a>
200	30300	151	C	4000	70	II	RM7	yes	<a href="#">&gt;&gt; 761904</a>
215	32400	150	C	4000	70	II	RM7	yes	<a href="#">&gt;&gt; 761911</a>
230	34150	148	C	4000	70	II	RM7	yes	<a href="#">&gt;&gt; 761928</a>
245	37700	153	B	4000	70	II	RM7	yes	<a href="#">&gt;&gt; 761935</a>
260	39425	151	C	4000	70	II	RM7	yes	<a href="#">&gt;&gt; 761942</a>
275	41650	151	C	4000	70	II	RM7	yes	<a href="#">&gt;&gt; 761959</a>
290	43275	149	C	4000	70	II	RM7	yes	<a href="#">&gt;&gt; 761966</a>
305	44950	147	C	4000	70	II	RM7	yes	<a href="#">&gt;&gt; 761973</a>
320	46675	145	C	4000	70	II	RM7	yes	<a href="#">&gt;&gt; 761980</a>
330	48025	145	C	4000	70	II	RM7	yes	<a href="#">&gt;&gt; 761997</a>

### TIARA 2 LED L HE

Rated power of the luminaire [W]*	Luminous flux [lm]*	Luminous efficacy [lm/W]	Energy efficiency class	Colour temperature [K]	Color rendering index (Ra) >	Electrical protection class	Optics	DIMM DALI	Index
117	20428	174	B	4000	70	II	RM7HE	yes	<a href="#">&gt;&gt; 761546</a>
123	21309	173	B	4000	70	II	RM7HE	yes	<a href="#">&gt;&gt; 761553</a>
137	23620	172	B	4000	70	II	RM7HE	yes	<a href="#">&gt;&gt; 761560</a>
140	24160	172	B	4000	70	II	RM7HE	yes	<a href="#">&gt;&gt; 761577</a>
145	25006	172	B	4000	70	II	RM7HE	yes	<a href="#">&gt;&gt; 761584</a>
150	25681	171	B	4000	70	II	RM7HE	yes	<a href="#">&gt;&gt; 761591</a>
155	26551	171	B	4000	70	II	RM7HE	yes	<a href="#">&gt;&gt; 761607</a>

# TIARA 2 LED L

## GENERAL CARD

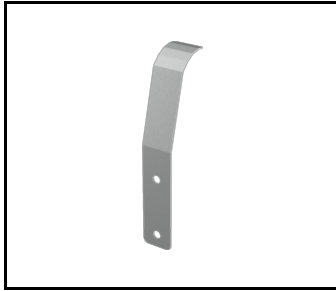
Rated power of the luminaire [W]*	Luminous flux [lm]*	Luminous efficacy [lm/W]	Energy efficiency class	Colour temperature [K]	Color rendering index (Ra) >	Electrical protection class	Optics	DIMM DALI	Index
160	27407	171	B	4000	70	II	RM7HE	yes	<a href="#">&gt;&gt; 761614</a>
170	29302	172	B	4000	70	II	RM7HE	yes	<a href="#">&gt;&gt; 761621</a>
180	30477	169	B	4000	70	II	RM7HE	yes	<a href="#">&gt;&gt; 761638</a>
190	32328	170	B	4000	70	II	RM7HE	yes	<a href="#">&gt;&gt; 761645</a>
200	33757	168	B	4000	70	II	RM7HE	yes	<a href="#">&gt;&gt; 761652</a>
215	36103	167	B	4000	70	II	RM7HE	yes	<a href="#">&gt;&gt; 761669</a>
230	38147	165	B	4000	70	II	RM7HE	yes	<a href="#">&gt;&gt; 761676</a>
245	39367	160	B	4000	70	II	RM7HE	yes	<a href="#">&gt;&gt; 761683</a>
260	41067	157	B	4000	70	II	RM7HE	yes	<a href="#">&gt;&gt; 761690</a>
275	43212	157	B	4000	70	II	RM7HE	yes	<a href="#">&gt;&gt; 761706</a>
290	44919	154	B	4000	70	II	RM7HE	yes	<a href="#">&gt;&gt; 761713</a>

# TIARA 2 LED L

GENERAL CARD

## ACCESSORIES AVAILABLE

index	Name
989766	Tiara 2 LED 64mm handle cover
	wall holder (grey)
UL00184	mounting grip 78 mm TIARA LED
	wall holder (galvanized)



Tiara 2 LED 64mm handle cover (989766)



wall holder (grey) (314056)



mounting grip 78 mm TIARA LED (UL00184)




wall holder (galvanized) (314049)

Card creation date: 26 March 2026

The company reserves the right to make design changes or upgrades in the presented product. Product data sheet does not constitute an offer. \* Parameter tolerance is +/- 10%

 This product is a subject to electric and electronic waste equipment regulations (WEEE).

 Certificate CE - Nr: 126/2025; 127/2025; 30/2026