

SKVER LED S (A)

GENERAL CARD



TECHNICAL PARAMETERS

Ingress protection:	IP66
Impact resistance:	IK10
Rated power of the luminaire [W]*:	20.00 - 50.00
Luminous flux [lm]*:	2230 - 6600
Colour temperature [K]:	3000; 4000
Color rendering index (Ra) >:	80
Electrical protection class:	II
Optics:	no
Control:	5-stage power reduction; ON/OFF
Colour of the body:	black
Luminous efficacy [lm/W]:	123.00 - 145.00
Energy efficiency class:	C; D
Material of the body:	powder coated aluminium
Diffuser type:	transparent
Diffuser material:	PC
SDCM:	4; 5

CHARACTERISTICS

Skver LED S (A) is the new generation of LED park and urban luminaires. It utilizes directional multi-lens arrays made of PMMA, each lens having the same optics, ensuring consistent light characteristics over time. The luminaire's design ensures the tightness of the internal chamber. As standard, the luminaire offers tool-free access to the electrical equipment using two independent knobs, which, upon request and for protection against vandalism or unauthorized opening, can be permanently secured with screws. The upper part of the luminaire features a dedicated hinge. The luminaire allows for the replacement of the integrated internal power/lighting module (compliant with ZhagaBook 13 and ZhagaBook 15 standards) without the use of tools, enabling quick and convenient servicing, allowing for the exchange of one integrated component without dismantling the entire luminaire and making soldered or screwed connections. There is no need for servicing at the installation site. Simply replace the module with a spare (accessory), close the luminaire, and then carry out the servicing work at the service location: at the luminaire owner's facility or return it to the manufacturer's service. The body and bracket are made of pressure die-cast aluminum, powder-coated in black, characterized by a very high degree of IP66 tightness and IK10 mechanical impact resistance. Standard equipment: protection against accidental luminaire overheating NTC; fully programmable DALI driver; available constant light output maintenance functions over time CLO and autonomous, 5-step power reduction; connection terminals; tool-free access. Additional options: accessory canopies transforming the external appearance of the luminaire, Zhaga connector (ZhagaBook 18); compatibility with control systems, anti-vandal protection with screws; additional SP10kV protection outside the power supply, on/off power supply without power reduction; knife switch disconnecting the integrated module voltage in case of chamber opening; made with a wire terminated with a quick connector; painting in any color from the RAL palette. Certificates: CE, RoHS, ENEC, ENEC+, Zhaga-D4i.

APPLICATION

External areas of places such as: town halls, libraries, city offices, healthcare facilities, schools, preschools, public gardens, streets, sidewalks, recreational areas: sports fields, playgrounds, bike paths, historical sites, old towns.

SKVER LED S (A)

GENERAL CARD

AVAILABLE VERSIONS



Click index >>, to see details

Skver LED S (A)

Rated power of the luminaire [W]*	Luminous flux [lm]*	Luminous efficacy [lm/W]	Colour temperature [K]	Color rendering index (Ra) >	Electrical protection class	Optics	Control	DIMM 1-10V	DIMM DALI	Index
26	3425	132	3000	80	II	no	5-stage power reduction	yes		>> 435119
26	3575	138	4000	80	II	no	5-stage power reduction	yes		>> 435171
33	4300	130	3000	80	II	no	5-stage power reduction	yes		>> 435126
33	4500	136	4000	80	II	no	5-stage power reduction	yes		>> 435188
39	5100	131	3000	80	II	no	5-stage power reduction	yes		>> 435133
39	5650	145	4000	80	II	no	5-stage power reduction	yes		>> 435195
44	5525	126	3000	80	II	no	5-stage power reduction	yes		>> 435140
44	5925	135	4000	80	II	no	5-stage power reduction	yes		>> 435201
50	6150	123	3000	80	II	no	5-stage power reduction	yes		>> 435157
50	6600	132	4000	80	II	no	5-stage power reduction	yes		>> 435218

Skver LED S (A) BASIC

Rated power of the luminaire [W]*	Luminous flux [lm]*	Luminous efficacy [lm/W]	Colour temperature [K]	Color rendering index (Ra) >	Electrical protection class	Optics	Control	DIMM 1-10V	DIMM DALI	Index
20	2230	124	4000	80	II	no	5-stage power reduction			>> 762123
20	2230	124	4000	80	II	no	ON/OFF			>> 824852
34	3900	124	4000	80	II	no	5-stage power reduction			>> 762130
34	3900	124	4000	80	II	no	ON/OFF			>> 824869
45	5275	126	4000	80	II	no	5-stage power reduction			>> 762147
45	5275	126	4000	80	II	no	5-stage power reduction		yes	>> 825057
45	5275	126	4000	80	II	no	ON/OFF			>> 824876

SKVER LED S (A)

GENERAL CARD

ACCESSORIES AVAILABLE

index	Name
435515	SKVER Backshield RAL9005
	SKVER Hood example 1 RAL9005
421518	SKVER Hood ULR example 2 RAL9005
435461	SKVER cover fi 48mm
584534	Key for opening Tiara XS / Skver
	SKVER cover fi 60mm



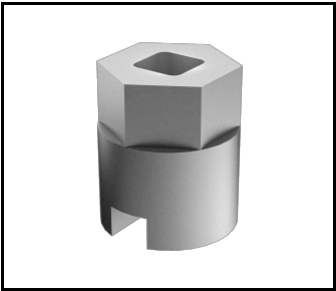
SKVER Backshield RAL9005 (435515)



SKVER Hood example 1
RAL9005 (435522)



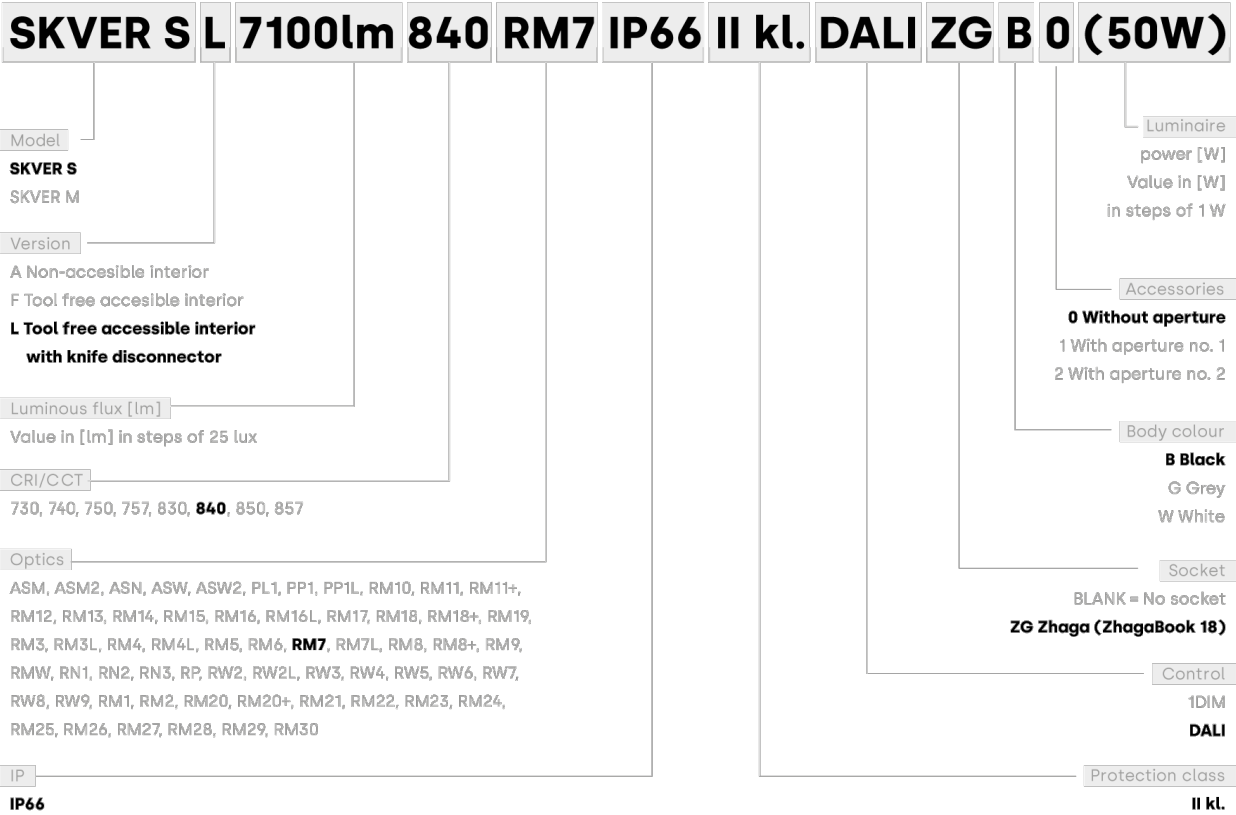
SKVER Hood ULR example 2
RAL9005 (421518)



Key for opening Tiara XS /
Skver (584534)

SKVER LED S (A)

GENERAL CARD





Pole mounted luminaires

The Skver park and urban luminaires combine high light efficiency and unprecedented functionality with innovative, modular design.

This feature allows for easy and quick implementation of structural and visual changes in the luminaire.

Backshield

The luminaire can be equipped with a backshield, which prevents the light from spreading in unwanted directions.

Pole mounted luminaires

Skver Bespoke road luminaires provide a one-of-a-kind solution, showcasing our dedication to meeting the unique needs of our customers.

Bespoke version - Example 6

The Skver LED luminaire with a flower-shaped hood not only provides effective lighting, but also adds a touch of charm and aesthetics to urban streets, creating a pleasant atmosphere.

