

# QUEST LED EVO L ENDURA

GENERAL CARD



## TECHNICAL PARAMETERS

<b>Ingress protection:</b>	IP66; IP67
<b>Rated power of the luminaire [W]*:</b>	81.00 - 238.00
<b>Luminous flux [lm]*:</b>	14550 - 40200
<b>Colour temperature [K]:</b>	4000
<b>Color rendering index (Ra) &gt;:</b>	70
<b>SDCM:</b>	3
<b>Electrical protection class:</b>	I
<b>Energy efficiency class:</b>	A; B
<b>Material of the body:</b>	aluminium
<b>Colour of the body:</b>	RAL7016
<b>Diffuser material:</b>	glass
<b>Diffuser type:</b>	transparent
<b>Beam angle [°]:</b>	20 - 120
<b>Mounting version:</b>	surface
<b>Working temperature [°C]:</b>	from -20 to +50
<b>Dimensions (H/W/T/S) [mm]:</b>	434/550/57;
<b>Impact resistance:</b>	IK08; IK10

## CHARACTERISTICS

The Endura version of Quest LED EVO L luminaires, their high-bay versions: surface-mounted Quest LED EVO L HB NT and suspended Quest LED EVO L HB Z are extremely efficient premium class floodlights, manufactured in Poland, adapted to operate at high temperatures (up to 50 degrees C). The body is made of die-cast aluminium, powder coated, without an external heat sink and ribs that make it difficult to keep clean. The basic version has a steel arm with a 7.5-degree scale, while the highbay endura (HB NT) version is available in surface-mounted and suspended (HB Z) versions. The diffuser is made of tempered glass, under which there are LEDs with the highest efficiency. Various types of optics, especially asymmetrical ones, provide great freedom in selecting the right solution for a specific application. Thanks to the highest tightness rating on the market (IP67) and maximum impact resistance (IK10), it will perform well in all conditions, regardless of the weather and installation location. The new version of the renowned and proven QUEST model in its smallest version offers even better lighting parameters, achieving an efficiency of over 170 lm/W. The Endura variant also meets the requirements of PN-EN 60598-2 part 5, which allows them to be classified as illumination projectors. This means complete freedom of installation in any position, with 360° rotation and resistance to strong winds – an advantage not offered by other floodlights. An additional advantage for contractors is the sealed quick connector – an innovative solution that eliminates traditional, time-consuming connection methods (screws). Thanks to an intuitive system of coloured latches, connector installation is simple, quick and tool-free. The accessory kit includes: pole mounting brackets (basic version); frame for flush mounting, e.g. in shelters (basic version); light pollution reduction screens (basic version); protective grilles in two colours with different degrees of light reduction (white RAL7016: 4%, body colour RAL7016: 8%). The models can be equipped with an external motion and twilight sensor.

## APPLICATION

Quest LED EVO L Endura, Quest LED EVO L Endura HB NT and Endura HB Z are used in: lighting educational, administrative and institutional facilities, halls, garages, passageways, warehouses, shops, the food industry and commercial and service facilities related to food products. Illumination of buildings, small sports fields, open spaces and car parks, environments with elevated ambient temperatures (up to 50 degrees C). Installation options: as a floodlight, on poles and masts, on building facades, as a surface-mounted highbay (HB NT version), suspended highbay (HB Z version), flush-mounted (e.g. shelters). The product is particularly well suited for use in factories and production halls as well as large-area warehouses, especially in areas exposed to high temperatures.

# QUEST LED EVO L ENDURA

GENERAL CARD

## AVAILABLE VERSIONS



Click index >>, to see details

QUEST LED EVO L ENDURA surface

Rated power of the luminaire [W]*	Luminous flux [lm]*	Beam angle [°]	Light distribution type	Socket type	DIMM DALI	Dimensions (H/W/T/S) [mm]	Index
81	15050	20				434/550/57	<a href="#">&gt;&gt; 844911</a>
81	15250	30				434/550/57	<a href="#">&gt;&gt; 844973</a>
81	15150	45				434/550/57	<a href="#">&gt;&gt; 845086</a>
81	15300	60				434/550/57	<a href="#">&gt;&gt; 845147</a>
81	15200	90				434/550/57	<a href="#">&gt;&gt; 845208</a>
81	14550		ASW			434/550/57	<a href="#">&gt;&gt; 845260</a>
81	14750		ASM			434/550/57	<a href="#">&gt;&gt; 845321</a>
81	15500		ASN			434/550/57	<a href="#">&gt;&gt; 845383</a>
81	15400		RW10			434/550/57	<a href="#">&gt;&gt; 845444</a>
81	15400		RW8			434/550/57	<a href="#">&gt;&gt; 845505</a>
81	15100	120	general			434/550/57	<a href="#">&gt;&gt; 845567</a>
109	19550	20				434/550/57	<a href="#">&gt;&gt; 844928</a>
109	19800	30				434/550/57	<a href="#">&gt;&gt; 844980</a>
109	19700	45				434/550/57	<a href="#">&gt;&gt; 845093</a>
109	19900	60				434/550/57	<a href="#">&gt;&gt; 845154</a>
109	19750	90				434/550/57	<a href="#">&gt;&gt; 845215</a>
109	18900		ASW			434/550/57	<a href="#">&gt;&gt; 845277</a>
109	19150		ASM			434/550/57	<a href="#">&gt;&gt; 845338</a>
109	20150		ASN			434/550/57	<a href="#">&gt;&gt; 845390</a>
109	20050		RW10			434/550/57	<a href="#">&gt;&gt; 845451</a>
109	20050		RW8			434/550/57	<a href="#">&gt;&gt; 845512</a>
109	19750	120	general			434/550/57	<a href="#">&gt;&gt; 845574</a>
109	19550	20			yes	434/550/57	<a href="#">&gt;&gt; 842788</a>
109	19800	30			yes	434/550/57	<a href="#">&gt;&gt; 842795</a>
109	19700	45			yes	434/550/57	<a href="#">&gt;&gt; 842801</a>
109	19900	60			yes	434/550/57	<a href="#">&gt;&gt; 842818</a>
109	19750	90			yes	434/550/57	<a href="#">&gt;&gt; 842825</a>
109	18900		ASW		yes	434/550/57	<a href="#">&gt;&gt; 842832</a>
109	19150		ASM		yes	434/550/57	<a href="#">&gt;&gt; 842849</a>
109	20150		ASN		yes	434/550/57	<a href="#">&gt;&gt; 842856</a>
109	20050		RW10		yes	434/550/57	<a href="#">&gt;&gt; 842863</a>
109	20050		RW8		yes	434/550/57	<a href="#">&gt;&gt; 842870</a>
109	19750	120	general		yes	434/550/57	<a href="#">&gt;&gt; 842887</a>
147	25650	20				434/550/57	<a href="#">&gt;&gt; 844935</a>

# QUEST LED EVO L ENDURA

## GENERAL CARD

Rated power of the luminaire [W]*	Luminous flux [lm]*	Beam angle [°]	Light distribution type	Socket type	DIMM DALI	Dimensions (H/W/T/S) [mm]	Index
147	26000	30				434/550/57	<a href="#">&gt;&gt; 844997</a>
147	25800	45				434/550/57	<a href="#">&gt;&gt; 845109</a>
147	26100	60				434/550/57	<a href="#">&gt;&gt; 845161</a>
147	25900	90				434/550/57	<a href="#">&gt;&gt; 845222</a>
147	24800		ASW			434/550/57	<a href="#">&gt;&gt; 845284</a>
147	25100		ASM			434/550/57	<a href="#">&gt;&gt; 845345</a>
147	26450		ASN			434/550/57	<a href="#">&gt;&gt; 845406</a>
147	26250		RW10			434/550/57	<a href="#">&gt;&gt; 845468</a>
147	26250		RW8			434/550/57	<a href="#">&gt;&gt; 845529</a>
147	25900	120	general			434/550/57	<a href="#">&gt;&gt; 845581</a>
176	30200	20				434/550/57	<a href="#">&gt;&gt; 844942</a>
176	30600	30				434/550/57	<a href="#">&gt;&gt; 845055</a>
176	30400	45				434/550/57	<a href="#">&gt;&gt; 845116</a>
176	30750	60				434/550/57	<a href="#">&gt;&gt; 845178</a>
176	30500	90				434/550/57	<a href="#">&gt;&gt; 845239</a>
176	29200		ASW			434/550/57	<a href="#">&gt;&gt; 845291</a>
176	29600		ASM			434/550/57	<a href="#">&gt;&gt; 845352</a>
176	31100		ASN			434/550/57	<a href="#">&gt;&gt; 845413</a>
176	30950		RW10			434/550/57	<a href="#">&gt;&gt; 845475</a>
176	30950		RW8			434/550/57	<a href="#">&gt;&gt; 845536</a>
176	30500	120	general			434/550/57	<a href="#">&gt;&gt; 845598</a>
206	34600	20				434/550/57	<a href="#">&gt;&gt; 844959</a>
206	35050	30				434/550/57	<a href="#">&gt;&gt; 845062</a>
206	34850	45				434/550/57	<a href="#">&gt;&gt; 845123</a>
206	35200	60				434/550/57	<a href="#">&gt;&gt; 845185</a>
206	34950	90				434/550/57	<a href="#">&gt;&gt; 845246</a>
206	33450		ASW			434/550/57	<a href="#">&gt;&gt; 845307</a>
206	33900		ASM			434/550/57	<a href="#">&gt;&gt; 845369</a>
206	35650		ASN			434/550/57	<a href="#">&gt;&gt; 845420</a>
206	35450		RW10			434/550/57	<a href="#">&gt;&gt; 845482</a>
206	35450		RW8			434/550/57	<a href="#">&gt;&gt; 845543</a>
206	34850	120	general			434/550/57	<a href="#">&gt;&gt; 845604</a>
238	39050	20				434/550/57	<a href="#">&gt;&gt; 844966</a>
238	39550	30				434/550/57	<a href="#">&gt;&gt; 845079</a>
238	39250	45				434/550/57	<a href="#">&gt;&gt; 845130</a>
238	39700	60				434/550/57	<a href="#">&gt;&gt; 845192</a>
238	39400	90				434/550/57	<a href="#">&gt;&gt; 845253</a>
238	37750		ASW			434/550/57	<a href="#">&gt;&gt; 845314</a>
238	38200		ASM			434/550/57	<a href="#">&gt;&gt; 845376</a>

# QUEST LED EVO L ENDURA

## GENERAL CARD

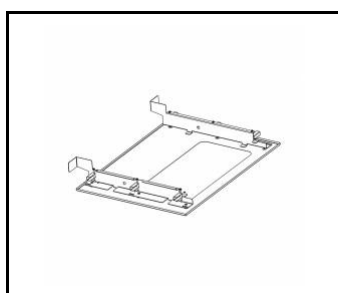
Rated power of the luminaire [W]*	Luminous flux [lm]*	Beam angle [°]	Light distribution type	Socket type	DIMM DALI	Dimensions (H/W/T/S) [mm]	Index
238	40200		ASN			434/550/57	<a href="#">&gt;&gt; 845437</a>
238	39950		RW10			434/550/57	<a href="#">&gt;&gt; 845499</a>
238	39950		RW8			434/550/57	<a href="#">&gt;&gt; 845550</a>
238	39250	120	general			434/550/57	<a href="#">&gt;&gt; 845611</a>
238	39750		RM20			434/550/57	<a href="#">&gt;&gt; 845628</a>
238	39950		RM10			434/550/57	<a href="#">&gt;&gt; 845635</a>
238	39050	20			yes	434/550/57	<a href="#">&gt;&gt; 842894</a>
238	39550	30			yes	434/550/57	<a href="#">&gt;&gt; 842900</a>
238	39250	45			yes	434/550/57	<a href="#">&gt;&gt; 842917</a>
238	39700	60			yes	434/550/57	<a href="#">&gt;&gt; 842924</a>
238	39400	90			yes	434/550/57	<a href="#">&gt;&gt; 842931</a>
238	37750		ASW		yes	434/550/57	<a href="#">&gt;&gt; 842948</a>
238	38200		ASM		yes	434/550/57	<a href="#">&gt;&gt; 842955</a>
238	40200		ASN		yes	434/550/57	<a href="#">&gt;&gt; 842962</a>
238	39950		RW10		yes	434/550/57	<a href="#">&gt;&gt; 842979</a>
238	39950		RW8		yes	434/550/57	<a href="#">&gt;&gt; 842986</a>
238	39250	120	general		yes	434/550/57	<a href="#">&gt;&gt; 842993</a>
238	39750		RM20		yes	434/550/57	<a href="#">&gt;&gt; 842504</a>
238	39950		RM10		yes	434/550/57	<a href="#">&gt;&gt; 842511</a>
238	39050	20		ZHAGA	yes	434/550/57	<a href="#">&gt;&gt; 838873</a>
238	39550	30		ZHAGA	yes	434/550/57	<a href="#">&gt;&gt; 838880</a>
238	39250	45		ZHAGA	yes	434/550/57	<a href="#">&gt;&gt; 838897</a>
238	39700	60		ZHAGA	yes	434/550/57	<a href="#">&gt;&gt; 838903</a>
238	39400	90		ZHAGA	yes	434/550/57	<a href="#">&gt;&gt; 838910</a>
238	37750		ASW	ZHAGA	yes	434/550/57	<a href="#">&gt;&gt; 838927</a>
238	38200		ASM	ZHAGA	yes	434/550/57	<a href="#">&gt;&gt; 838934</a>
238	40200		ASN	ZHAGA	yes	434/550/57	<a href="#">&gt;&gt; 838941</a>
238	39950		RW10	ZHAGA	yes	434/550/57	<a href="#">&gt;&gt; 838958</a>
238	39950		RW8	ZHAGA	yes	434/550/57	<a href="#">&gt;&gt; 838965</a>
238	39250	120	general	ZHAGA	yes	434/550/57	<a href="#">&gt;&gt; 838972</a>
238	39750		RM20	ZHAGA	yes	434/550/57	<a href="#">&gt;&gt; 838989</a>
238	39950		RM10	ZHAGA	yes	434/550/57	<a href="#">&gt;&gt; 838996</a>
238	37750		ASW	ZG-DN	yes	434/550/57	<a href="#">&gt;&gt; 881831</a>
238	38200		ASM	ZG-DN	yes	434/550/57	<a href="#">&gt;&gt; 881848</a>

# QUEST LED EVO L ENDURA

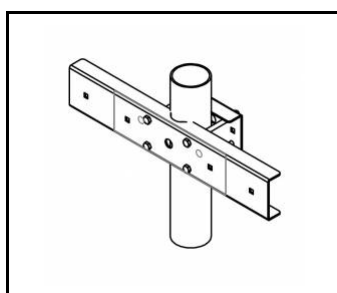
GENERAL CARD

## ACCESSORIES AVAILABLE

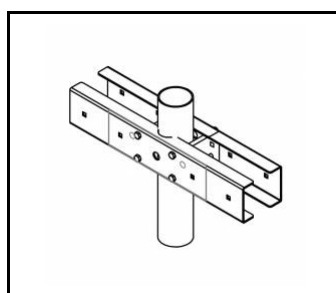
index	Name
<a href="#">840470</a>	Quest LED Evo L recessed frame RAL7016
840401	QUEST LED EVO M/L pole holder 1x
840418	QUEST LED EVO M/L pole holder 2x
840449	QUEST LED EVO L protective grid RAL7016
840081	QUEST LED EVO L protective grid RAL9003
840388	QUEST LED EVO M/L RCR set 1x
840500	QUEST LED EVO L cover RAL7016
840098	QUEST LED EVO wall mount RAL7016 1m



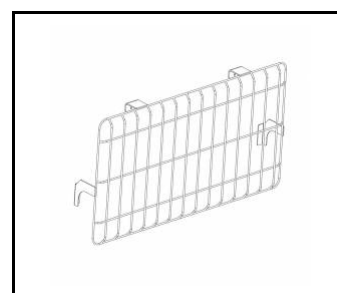
Quest LED Evo L recessed frame RAL7016 (840470)



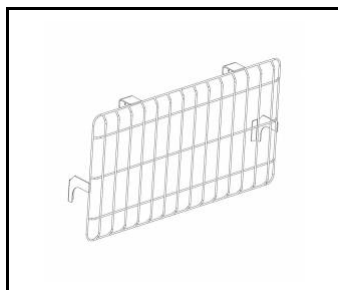
QUEST LED EVO M/L pole holder 1x (840401)



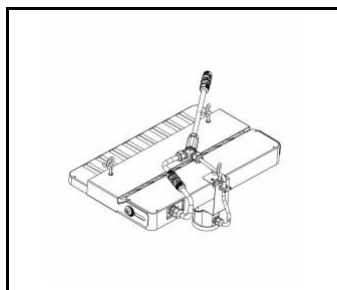
QUEST LED EVO M/L pole holder 2x (840418)



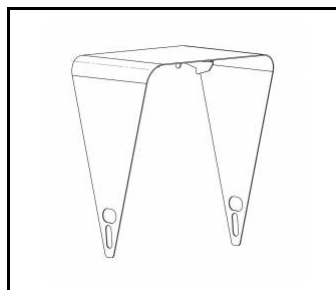
QUEST LED EVO L protective grid RAL7016 (840449)



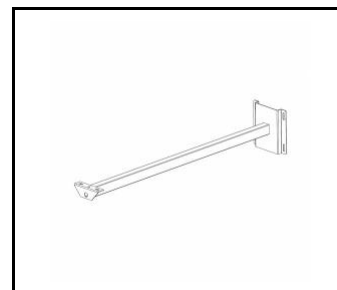
QUEST LED EVO L protective grid RAL9003 (840081)



QUEST LED EVO M/L RCR set 1x (840388)



QUEST LED EVO L cover RAL7016 (840500)



QUEST LED EVO wall mount RAL7016 1m (840098)

Card creation date: 30 April 2026

The company reserves the right to make design changes or upgrades in the presented product. Product data sheet does not constitute an offer. \* Parameter tolerance is +/- 10%



This product is a subject to electric and electronic waste equipment regulations (WEEE).



Certificate CE - Nr: 78/2025