

# QUEST LED EVO L

## GENERAL CARD



## TECHNICAL PARAMETERS

<b>Ingress protection:</b>	IP66; IP67
<b>Rated power of the luminaire [W]*:</b>	81.00 - 297.00
<b>Luminous flux [lm]*:</b>	14550 - 48900
<b>Colour temperature [K]:</b>	4000
<b>Color rendering index (Ra) &gt;:</b>	70
<b>SDCM:</b>	3
<b>Electrical protection class:</b>	I
<b>Energy efficiency class:</b>	A; B; C
<b>Material of the body:</b>	aluminium
<b>Colour of the body:</b>	RAL7016
<b>Diffuser material:</b>	glass
<b>Diffuser type:</b>	transparent
<b>Beam angle [°]:</b>	20 - 120
<b>Mounting version:</b>	surface
<b>Working temperature [°C]:</b>	from -20 to +35
<b>Dimensions (H/W/T/S) [mm]:</b>	434/550/57;
<b>Impact resistance:</b>	IK08; IK10

## CHARACTERISTICS

Quest LED EVO L, their high-bay versions: surface-mounted Quest LED EVO L HB NT and suspended Quest LED EVO L HB Z are extremely efficient floodlights and premium HB class luminaires, manufactured in Poland. Their body is made of die-cast aluminium, powder coated, without an external heat sink and ribs that make it difficult to keep clean. The diffuser is made of tempered glass, under which there are LEDs with the highest efficiency. Different types of optics, especially asymmetrical ones, provide great freedom in choosing the right solution for a specific application. Thanks to the highest tightness rating on the market (IP67) and maximum impact resistance (IK10), the floodlights will perform well in all conditions, regardless of the weather and installation location. The new version of the renowned and proven QUEST model offers even better lighting parameters, achieving an efficiency of over 170 lm/W. Quest LED EVO L meets the requirements of PN-EN 60598-2 part 5, which allows it to be classified as an illumination projector, enabling complete freedom of installation in any position, with 360° rotation and resistance to strong winds. An additional advantage for contractors is the sealed quick connector – an innovative solution that eliminates traditional, time-consuming connection methods. Thanks to an intuitive system of coloured latches, connector installation is simple, quick and tool-free. The HB NT version is designed for surface mounting as a highbay using dedicated brackets. The HB Z version is designed for suspension. The accessory kit includes brackets for pole mounting, a frame for flush mounting (e.g. shelters), light pollution reduction screens and protective grids in two colours with different degrees of light reduction (white RAL7016: 4%, body colour RAL7016: 8%). The models can be equipped with an external motion and twilight sensor. They are also available in the ENDURA version, resistant to elevated ambient temperatures up to 50°C. The range also includes dual-module versions with increased flux and power. DALI versions are available (in the case of a gap in a specific power rating in the range with a DALI power supply, check the ENDURA DALI versions).

## APPLICATION

Quest LED EVO L is widely used in lighting educational, administrative and institutional facilities, halls, garages, passageways, warehouses, shops, as well as in the food industry and commercial and service facilities related to food products. They are an ideal solution for small sports fields, open spaces and car parks. They can be mounted as floodlights on poles and masts, on building facades, as well as surface-mounted highbays (HB NT version) and suspended highbays (HB Z version). Thanks to the flush-mounted option, they are perfect for shelters. Quest LED EVO L is an excellent choice for production plants and halls as well as large-area warehouses.

# QUEST LED EVO L

GENERAL CARD

## AVAILABLE VERSIONS



Click index >>, to see details

### QUEST LED EVO L surface

Rated power of the luminaire [W]*	Luminous flux [lm]*	Beam angle [°]	Light distribution type	DIMM DALI	Socket type	Dimensions (H/W/T/S) [mm]	Index
81	15050	20				434/550/57	<a href="#">&gt;&gt; 834721</a>
81	15250	30				434/550/57	<a href="#">&gt;&gt; 834806</a>
81	15150	45				434/550/57	<a href="#">&gt;&gt; 834882</a>
81	15300	60				434/550/57	<a href="#">&gt;&gt; 834967</a>
81	15200	90				434/550/57	<a href="#">&gt;&gt; 835049</a>
81	14550		ASW			434/550/57	<a href="#">&gt;&gt; 835124</a>
81	14750		ASM			434/550/57	<a href="#">&gt;&gt; 835209</a>
81	15500		ASN			434/550/57	<a href="#">&gt;&gt; 835285</a>
81	15400		RW10			434/550/57	<a href="#">&gt;&gt; 835360</a>
81	15400		RW8			434/550/57	<a href="#">&gt;&gt; 835469</a>
81	15100	120	general			434/550/57	<a href="#">&gt;&gt; 835544</a>
109	19550	20				434/550/57	<a href="#">&gt;&gt; 834738</a>
109	19800	30				434/550/57	<a href="#">&gt;&gt; 834813</a>
109	19700	45				434/550/57	<a href="#">&gt;&gt; 834899</a>
109	19900	60				434/550/57	<a href="#">&gt;&gt; 834974</a>
109	19750	90				434/550/57	<a href="#">&gt;&gt; 835056</a>
109	18900		ASW			434/550/57	<a href="#">&gt;&gt; 835131</a>
109	19150		ASM			434/550/57	<a href="#">&gt;&gt; 835216</a>
109	20150		ASN			434/550/57	<a href="#">&gt;&gt; 835292</a>
109	20050		RW10			434/550/57	<a href="#">&gt;&gt; 835377</a>
109	20050		RW8			434/550/57	<a href="#">&gt;&gt; 835476</a>
109	19750	120	general			434/550/57	<a href="#">&gt;&gt; 835551</a>
109	19550	20		yes		434/550/57	<a href="#">&gt;&gt; 835803</a>
109	19800	30		yes		434/550/57	<a href="#">&gt;&gt; 835810</a>
109	19700	45		yes		434/550/57	<a href="#">&gt;&gt; 835827</a>
109	19900	60		yes		434/550/57	<a href="#">&gt;&gt; 835834</a>
109	19750	90		yes		434/550/57	<a href="#">&gt;&gt; 835841</a>
109	18900		ASW	yes		434/550/57	<a href="#">&gt;&gt; 835858</a>
109	19150		ASM	yes		434/550/57	<a href="#">&gt;&gt; 835865</a>
109	20150		ASN	yes		434/550/57	<a href="#">&gt;&gt; 835872</a>
109	20050		RW10	yes		434/550/57	<a href="#">&gt;&gt; 835889</a>
109	20050		RW8	yes		434/550/57	<a href="#">&gt;&gt; 835896</a>
109	19750	120	general	yes		434/550/57	<a href="#">&gt;&gt; 835902</a>
109	18900		ASW	yes	ZG-DN	434/550/57	<a href="#">&gt;&gt; 881879</a>

# QUEST LED EVO L

## GENERAL CARD

Rated power of the luminaire [W]*	Luminous flux [lm]*	Beam angle [°]	Light distribution type	DIMM DALI	Socket type	Dimensions (H/W/T/S) [mm]	Index
109	19150		ASM	yes	ZG-DN	434/550/57	<a href="#">&gt;&gt; 881886</a>
147	25650	20				434/550/57	<a href="#">&gt;&gt; 834745</a>
147	26000	30				434/550/57	<a href="#">&gt;&gt; 834820</a>
147	25800	45				434/550/57	<a href="#">&gt;&gt; 834905</a>
147	26100	60				434/550/57	<a href="#">&gt;&gt; 834981</a>
147	25900	90				434/550/57	<a href="#">&gt;&gt; 835063</a>
147	24800		ASW			434/550/57	<a href="#">&gt;&gt; 835148</a>
147	25100		ASM			434/550/57	<a href="#">&gt;&gt; 835223</a>
147	26450		ASN			434/550/57	<a href="#">&gt;&gt; 835308</a>
147	26250		RW10			434/550/57	<a href="#">&gt;&gt; 835384</a>
147	26250		RW8			434/550/57	<a href="#">&gt;&gt; 835483</a>
147	25900	120	general			434/550/57	<a href="#">&gt;&gt; 835568</a>
176	30200	20				434/550/57	<a href="#">&gt;&gt; 834752</a>
176	30600	30				434/550/57	<a href="#">&gt;&gt; 834837</a>
176	30400	45				434/550/57	<a href="#">&gt;&gt; 834912</a>
176	30750	60				434/550/57	<a href="#">&gt;&gt; 834998</a>
176	30500	90				434/550/57	<a href="#">&gt;&gt; 835070</a>
176	29200		ASW			434/550/57	<a href="#">&gt;&gt; 835155</a>
176	29600		ASM			434/550/57	<a href="#">&gt;&gt; 835230</a>
176	31100		ASN			434/550/57	<a href="#">&gt;&gt; 835315</a>
176	30950		RW10			434/550/57	<a href="#">&gt;&gt; 835391</a>
176	30950		RW8			434/550/57	<a href="#">&gt;&gt; 835490</a>
176	30500	120	general			434/550/57	<a href="#">&gt;&gt; 835575</a>
176	29200		ASW	yes	ZG-DN	434/550/57	<a href="#">&gt;&gt; 881855</a>
176	29600		ASM	yes	ZG-DN	434/550/57	<a href="#">&gt;&gt; 881862</a>
206	34600	20				434/550/57	<a href="#">&gt;&gt; 834769</a>
206	35050	30				434/550/57	<a href="#">&gt;&gt; 834844</a>
206	34850	45				434/550/57	<a href="#">&gt;&gt; 834929</a>
206	35200	60				434/550/57	<a href="#">&gt;&gt; 835001</a>
206	34950	90				434/550/57	<a href="#">&gt;&gt; 835087</a>
206	33450		ASW			434/550/57	<a href="#">&gt;&gt; 835162</a>
206	33900		ASM			434/550/57	<a href="#">&gt;&gt; 835247</a>
206	35650		ASN			434/550/57	<a href="#">&gt;&gt; 835322</a>
206	35450		RW10			434/550/57	<a href="#">&gt;&gt; 835407</a>
206	35450		RW8			434/550/57	<a href="#">&gt;&gt; 835506</a>
206	34850	120	general			434/550/57	<a href="#">&gt;&gt; 835582</a>
206	34600	20		yes		434/550/57	<a href="#">&gt;&gt; 835919</a>
206	35050	30		yes		434/550/57	<a href="#">&gt;&gt; 835926</a>
206	34850	45		yes		434/550/57	<a href="#">&gt;&gt; 835933</a>

# QUEST LED EVO L

## GENERAL CARD

Rated power of the luminaire [W]*	Luminous flux [lm]*	Beam angle [°]	Light distribution type	DIMM DALI	Socket type	Dimensions (H/W/T/S) [mm]	Index
206	35200	60		yes		434/550/57	<a href="#">&gt;&gt; 835940</a>
206	34950	90		yes		434/550/57	<a href="#">&gt;&gt; 835957</a>
206	33450		ASW	yes		434/550/57	<a href="#">&gt;&gt; 835964</a>
206	33900		ASM	yes		434/550/57	<a href="#">&gt;&gt; 835971</a>
206	35650		ASN	yes		434/550/57	<a href="#">&gt;&gt; 835988</a>
206	35450		RW10	yes		434/550/57	<a href="#">&gt;&gt; 835995</a>
206	35450		RW8	yes		434/550/57	<a href="#">&gt;&gt; 838507</a>
206	34850	120	general	yes		434/550/57	<a href="#">&gt;&gt; 838514</a>
238	39050	20				434/550/57	<a href="#">&gt;&gt; 834776</a>
238	39550	30				434/550/57	<a href="#">&gt;&gt; 834851</a>
238	39250	45				434/550/57	<a href="#">&gt;&gt; 834936</a>
238	39700	60				434/550/57	<a href="#">&gt;&gt; 835018</a>
238	39400	90				434/550/57	<a href="#">&gt;&gt; 835094</a>
238	37750		ASW			434/550/57	<a href="#">&gt;&gt; 835179</a>
238	38200		ASM			434/550/57	<a href="#">&gt;&gt; 835254</a>
238	40200		ASN			434/550/57	<a href="#">&gt;&gt; 835339</a>
238	39950		RW10			434/550/57	<a href="#">&gt;&gt; 835414</a>
238	39950		RW8			434/550/57	<a href="#">&gt;&gt; 835513</a>
238	39250	120	general			434/550/57	<a href="#">&gt;&gt; 835599</a>
260	42200	20				434/550/57	<a href="#">&gt;&gt; 834783</a>
260	42750	30				434/550/57	<a href="#">&gt;&gt; 834868</a>
260	42450	45				434/550/57	<a href="#">&gt;&gt; 834943</a>
260	42950	60				434/550/57	<a href="#">&gt;&gt; 835025</a>
260	42600	90				434/550/57	<a href="#">&gt;&gt; 835100</a>
260	40800		ASW			434/550/57	<a href="#">&gt;&gt; 835186</a>
260	41300		ASM			434/550/57	<a href="#">&gt;&gt; 835261</a>
260	43450		ASN			434/550/57	<a href="#">&gt;&gt; 835346</a>
260	43200		RW10			434/550/57	<a href="#">&gt;&gt; 835421</a>
260	43200		RW8			434/550/57	<a href="#">&gt;&gt; 835520</a>
260	42150	120	general			434/550/57	<a href="#">&gt;&gt; 835605</a>
297	47450	20				434/550/57	<a href="#">&gt;&gt; 834790</a>
297	48100	30				434/550/57	<a href="#">&gt;&gt; 834875</a>
297	47750	45				434/550/57	<a href="#">&gt;&gt; 834950</a>
297	48300	60				434/550/57	<a href="#">&gt;&gt; 835032</a>
297	47900	90				434/550/57	<a href="#">&gt;&gt; 835117</a>
297	45900		ASW			434/550/57	<a href="#">&gt;&gt; 835193</a>
297	46500		ASM			434/550/57	<a href="#">&gt;&gt; 835278</a>
297	48900		ASN			434/550/57	<a href="#">&gt;&gt; 835353</a>
297	48600		RW10			434/550/57	<a href="#">&gt;&gt; 835438</a>

# QUEST LED EVO L

## GENERAL CARD

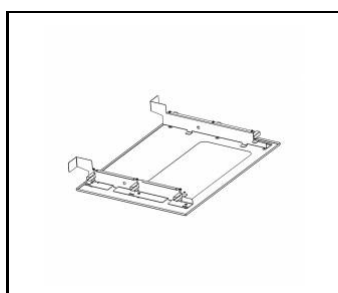
Rated power of the luminaire [W]*	Luminous flux [lm]*	Beam angle [°]	Light distribution type	DIMM DALI	Socket type	Dimensions (H/W/T/S) [mm]	Index
297	48350		RM20			434/550/57	<a href="#">&gt;&gt; 835445</a>
297	48600		RM10			434/550/57	<a href="#">&gt;&gt; 835452</a>
297	48600		RW8			434/550/57	<a href="#">&gt;&gt; 835537</a>
297	47800	120	general			434/550/57	<a href="#">&gt;&gt; 835612</a>
297	47450	20		yes		434/550/57	<a href="#">&gt;&gt; 838521</a>
297	48100	30		yes		434/550/57	<a href="#">&gt;&gt; 838538</a>
297	47750	45		yes		434/550/57	<a href="#">&gt;&gt; 838545</a>
297	48300	60		yes		434/550/57	<a href="#">&gt;&gt; 838552</a>
297	47900	90		yes		434/550/57	<a href="#">&gt;&gt; 838569</a>
297	45900		ASW	yes		434/550/57	<a href="#">&gt;&gt; 838576</a>
297	46500		ASM	yes		434/550/57	<a href="#">&gt;&gt; 838583</a>
297	48900		ASN	yes		434/550/57	<a href="#">&gt;&gt; 838590</a>
297	48600		RW10	yes		434/550/57	<a href="#">&gt;&gt; 838606</a>
297	48350		RM20	yes		434/550/57	<a href="#">&gt;&gt; 838613</a>
297	48600		RM10	yes		434/550/57	<a href="#">&gt;&gt; 838620</a>
297	48600		RW8	yes		434/550/57	<a href="#">&gt;&gt; 838637</a>
297	47800	120	general	yes		434/550/57	<a href="#">&gt;&gt; 838644</a>

# QUEST LED EVO L

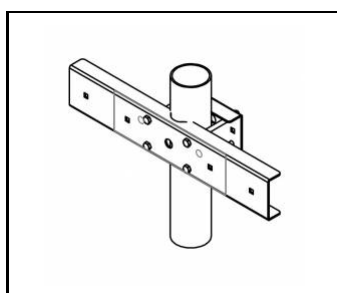
GENERAL CARD

## ACCESSORIES AVAILABLE

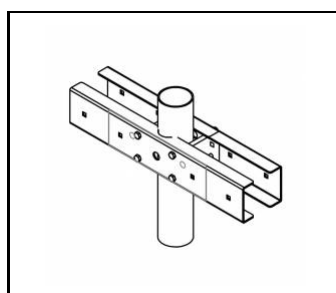
index	Name
<a href="#">840470</a>	Quest LED Evo L recessed frame RAL7016
840401	QUEST LED EVO M/L pole holder 1x
840418	QUEST LED EVO M/L pole holder 2x
840449	QUEST LED EVO L protective grid RAL7016
840081	QUEST LED EVO L protective grid RAL9003
840388	QUEST LED EVO M/L RCR set 1x
840500	QUEST LED EVO L cover RAL7016
840098	QUEST LED EVO wall mount RAL7016 1m



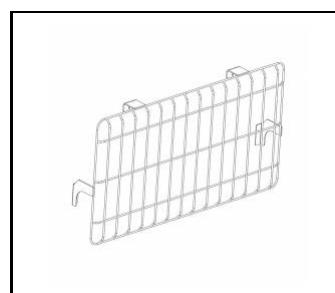
Quest LED Evo L recessed frame RAL7016 (840470)



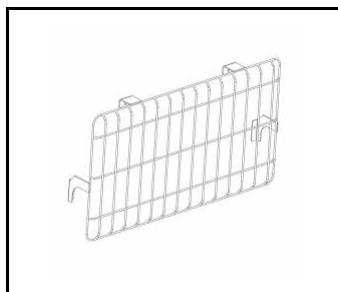
QUEST LED EVO M/L pole holder 1x (840401)



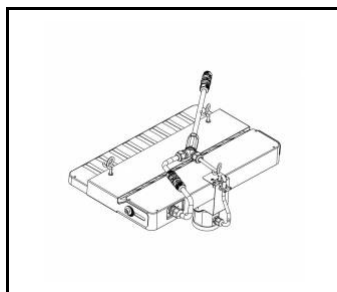
QUEST LED EVO M/L pole holder 2x (840418)



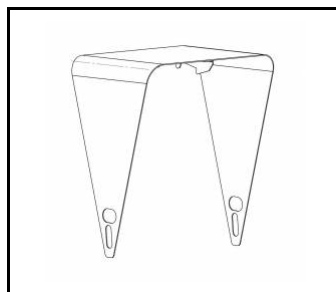
QUEST LED EVO L protective grid RAL7016 (840449)



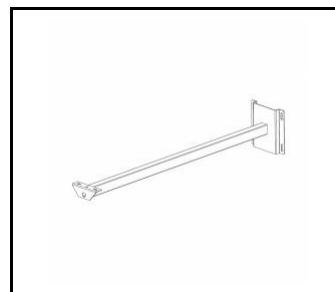
QUEST LED EVO L protective grid RAL9003 (840081)



QUEST LED EVO M/L RCR set 1x (840388)



QUEST LED EVO L cover RAL7016 (840500)



QUEST LED EVO wall mount RAL7016 1m (840098)

Card creation date: 30 April 2026

The company reserves the right to make design changes or upgrades in the presented product. Product data sheet does not constitute an offer. \* Parameter tolerance is +/- 10%

 This product is a subject to electric and electronic waste equipment regulations (WEEE).

 Certificate CE - Nr: 76/2025; 78/2025