

QUEST LED EVO M

GENERAL CARD



TECHNICAL PARAMETERS

Ingress protection:	IP67
Rated power of the luminaire [W]*:	56.00 - 185.00
Luminous flux [lm]*:	9950 - 29550
Colour temperature [K]:	3000; 4000
Color rendering index (Ra) >:	70
SDCM:	3
Electrical protection class:	I
Energy efficiency class:	A; B; C
Material of the body:	aluminium
Colour of the body:	RAL7016
Diffuser material:	glass
Diffuser type:	transparent
Beam angle [°]:	20 - 120
Mounting version:	surface
Working temperature [°C]:	from -20 to +35; from -20 to +50
Dimensions (H/W/T/S) [mm]:	383/550/57; 383/550/67;
Impact resistance:	IK08; IK10

CHARACTERISTICS

Quest LED EVO M, their high-bay versions: surface-mounted Quest LED EVO M HB NT and suspended Quest LED EVO M HB Z are extremely efficient floodlights and premium HB class luminaires, manufactured in Poland. Their body is made of die-cast aluminium, powder coated, without an external heat sink and ribs that make it difficult to keep clean. The diffuser is made of tempered glass, under which there are LEDs with the highest efficiency. Different types of optics, especially asymmetrical ones, provide great freedom in choosing the right solution for a specific application. Thanks to the highest tightness rating on the market (IP67) and maximum impact resistance (IK10), the floodlights will perform well in all conditions, regardless of the weather and installation location. The new version of the renowned and proven QUEST model offers even better lighting parameters, achieving an efficiency of over 170 lm/W. Quest LED EVO M meets the requirements of PN-EN 60598-2 part 5, which allows it to be classified as an illumination projector, enabling complete freedom of installation in any position, with 360° rotation and resistance to strong winds. An additional advantage for contractors is the sealed quick connector – an innovative solution that eliminates traditional, time-consuming connection methods. Thanks to an intuitive system of coloured latches, connector installation is simple, quick and tool-free. The HB NT version is designed for surface mounting as a highbay using dedicated brackets. The HB Z version is designed for suspension. The accessory kit includes brackets for pole mounting, a frame for flush mounting (e.g. shelters), light pollution reduction screens and protective grids in two colours with different degrees of light reduction (white RAL7016: 4%, body colour RAL7016: 8%). The models can be equipped with an external motion and twilight sensor. They are also available in the ENDURA version, resistant to elevated ambient temperatures up to 50°C. The range also includes dual-module versions with increased flux and power. DALI versions are available (in the case of a gap in a specific power rating in the range with a DALI power supply, check the ENDURA DALI versions). In addition, a version designed for RGB+W illumination is available.

APPLICATION

Quest LED EVO M is widely used in lighting educational, administrative and recreational facilities, halls, garages, passageways, warehouses, shops, as well as in the food industry and commercial and service facilities related to food products. They are an ideal solution for illuminating buildings, small sports fields, open spaces and car parks. They can be mounted as floodlights on poles and masts, on building facades, as well as surface-mounted highbays (HB NT version) and suspended highbays (HB Z version). Thanks to the flush-mounted option, they are perfect for shelters. Quest LED EVO M is an excellent choice for factories, production halls and large warehouses.

QUEST LED EVO M

GENERAL CARD

AVAILABLE VERSIONS



Click index >>, to see details

QUEST LED EVO M surface

Rated power of the luminaire [W]*	Luminous flux [lm]*	Beam angle [°]	Light distribution type	DIMM DALI	Socket type	Dimensions (H/W/T/S) [mm]	Index
56	10250	20				383/550/57	>> 833601
56	10400	30				383/550/57	>> 833687
56	10350	45				383/550/57	>> 833762
56	10450	60				383/550/57	>> 833847
56	10350	90				383/550/57	>> 833922
56	9950		ASW			383/550/57	>> 834004
56	10050		ASM			383/550/57	>> 834080
56	10600		ASN			383/550/57	>> 834165
56	10500		RW10			383/550/57	>> 834240
56	10450		RM20			383/550/57	>> 834325
56	10500		RM10			383/550/57	>> 834400
56	10500		RW8			383/550/57	>> 834486
56	10350	120	general			383/550/57	>> 834646
71	12850	20				383/550/57	>> 833618
71	13050	30				383/550/57	>> 833694
71	12950	45				383/550/57	>> 833779
71	13100	60				383/550/57	>> 833854
71	13000	90				383/550/57	>> 833939
71	12450		ASW			383/550/57	>> 834011
71	12600		ASM			383/550/57	>> 834097
71	13250		ASN			383/550/57	>> 834172
71	13150		RW10			383/550/57	>> 834257
71	13100		RM20			383/550/57	>> 834332
71	13150		RM10			383/550/57	>> 834417
71	13150		RW8			383/550/57	>> 834493
71	12950	120	general			383/550/57	>> 834653
80	14350	20				383/550/57	>> 833625
80	14550	30				383/550/57	>> 833700
80	14450	45				383/550/57	>> 833786
80	14600	60				383/550/57	>> 833861
80	14500	90				383/550/57	>> 833946
80	13850		ASW			383/550/57	>> 834028
80	14050		ASM			383/550/57	>> 834103
80	14800		ASN			383/550/57	>> 834189

QUEST LED EVO M

GENERAL CARD

Rated power of the luminaire [W]*	Luminous flux [lm]*	Beam angle [°]	Light distribution type	DIMM DALI	Socket type	Dimensions (H/W/T/S) [mm]	Index
80	14700		RW10			383/550/57	>> 834264
80	14600		RM20			383/550/57	>> 834349
80	14700		RM10			383/550/57	>> 834424
80	14700		RW8			383/550/57	>> 834509
80	14500	120	general			383/550/57	>> 834660
93	16000	20				383/550/57	>> 833632
93	16250	30				383/550/57	>> 833717
93	16100	45				383/550/57	>> 833793
93	16300	60				383/550/57	>> 833878
93	16150	90				383/550/57	>> 833953
93	15500		ASW			383/550/57	>> 834035
93	15700		ASM			383/550/57	>> 834110
93	16500		ASN			383/550/57	>> 834196
93	16400		RW10			383/550/57	>> 834271
93	16300		RM20			383/550/57	>> 834356
93	16400		RM10			383/550/57	>> 834431
93	16400		RW8			383/550/57	>> 834516
93	16150	120	general			383/550/57	>> 834677
93	16000	20		yes		383/550/57	>> 834561
93	16250	30		yes		383/550/57	>> 834578
93	16100	45		yes		383/550/57	>> 834585
93	16300	60		yes		383/550/57	>> 834592
93	16150	90		yes		383/550/57	>> 834608
93	15500		ASW	yes		383/550/57	>> 834615
93	15700		ASM	yes		383/550/57	>> 834622
93	16500		ASN	yes		383/550/57	>> 834639
93	16400		RW10	yes		383/550/57	>> 835629
93	16300		RM20	yes		383/550/57	>> 835636
93	16400		RM10	yes		383/550/57	>> 835643
93	16400		RW8	yes		383/550/57	>> 835650
93	16150	120	general	yes		383/550/57	>> 835667
111	19150	20				383/550/57	>> 833649
111	19400	30				383/550/57	>> 833724
111	19250	45				383/550/57	>> 833809
111	19450	60				383/550/57	>> 833885
111	19300	90				383/550/57	>> 833960
111	18500		ASW			383/550/57	>> 834042
111	18750		ASM			383/550/57	>> 834127
111	19700		ASN			383/550/57	>> 834202

QUEST LED EVO M

GENERAL CARD

Rated power of the luminaire [W]*	Luminous flux [lm]*	Beam angle [°]	Light distribution type	DIMM DALI	Socket type	Dimensions (H/W/T/S) [mm]	Index
111	19600		RW10			383/550/57	>> 834288
111	19500		RM20			383/550/57	>> 834363
111	19600		RM10			383/550/57	>> 834448
111	19600		RW8			383/550/57	>> 834523
111	19250	120	general			383/550/57	>> 834684
125	21250	20				383/550/57	>> 833656
125	21500	30				383/550/57	>> 833731
125	21400	45				383/550/57	>> 833816
125	21600	60				383/550/57	>> 833892
125	21450	90				383/550/57	>> 833977
125	20550		ASW			383/550/57	>> 834059
125	20800		ASM			383/550/57	>> 834134
125	21900		ASN			383/550/57	>> 834219
125	21750		RW10			383/550/57	>> 834295
125	21650		RM20			383/550/57	>> 834370
125	21750		RM10			383/550/57	>> 834455
125	21750		RW8			383/550/57	>> 834530
125	21400	120	general			383/550/57	>> 834691
152	25250	20				383/550/57	>> 833663
152	25550	30				383/550/57	>> 833748
152	25400	45				383/550/57	>> 833823
152	25650	60				383/550/57	>> 833908
152	25450	90				383/550/57	>> 833984
152	24400		ASW			383/550/57	>> 834066
152	24700		ASM			383/550/57	>> 834141
152	26000		ASN			383/550/57	>> 834226
152	25850		RW10			383/550/57	>> 834301
152	25700		RM20			383/550/57	>> 834387
152	25850		RM10			383/550/57	>> 834462
152	25850		RW8			383/550/57	>> 834547
152	25250	120	general			383/550/57	>> 834707
185	28550	20				383/550/57	>> 833670
185	28900	30				383/550/57	>> 833755
185	28700	45				383/550/57	>> 833830
185	29050	60				383/550/57	>> 833915
185	28800	90				383/550/57	>> 833991
185	27900		ASW			383/550/57	>> 834073
185	27950		ASM			383/550/57	>> 834158
185	29400		ASN			383/550/57	>> 834233

QUEST LED EVO M

GENERAL CARD

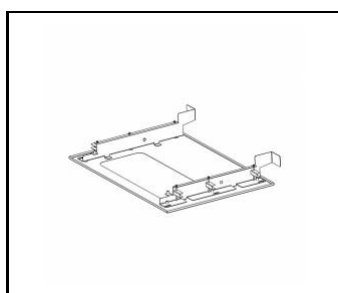
Rated power of the luminaire [W]*	Luminous flux [lm]*	Beam angle [°]	Light distribution type	DIMM DALI	Socket type	Dimensions (H/W/T/S) [mm]	Index
185	29200		RW10			383/550/57	>> 834318
185	29050		RM20			383/550/57	>> 834394
185	29200		RM10			383/550/57	>> 834479
185	29200		RW8			383/550/57	>> 834554
185	29550	120	general			383/550/57	>> 834714
185	28550	20		yes		383/550/57	>> 835674
185	28900	30		yes		383/550/57	>> 835681
185	28700	45		yes		383/550/57	>> 835698
185	29050	60		yes		383/550/57	>> 835704
185	28800	90		yes		383/550/57	>> 835711
185	27900		ASW	yes		383/550/57	>> 835728
185	27950		ASM	yes		383/550/57	>> 835735
185	29400		ASN	yes		383/550/57	>> 835742
185	29200		RW10	yes		383/550/57	>> 835759
185	29050		RM20	yes		383/550/57	>> 835766
185	29200		RM10	yes		383/550/57	>> 835773
185	29200		RW8	yes		383/550/57	>> 835780
185	29550	120	general	yes		383/550/57	>> 835797
93	14400		ASW	yes	ZG-DN	383/550/67	>> 842443
93	14500		ASM	yes	ZG-DN	383/550/67	>> 842450
152	21300		ASW	yes	ZG-DN	383/550/67	>> 842429
152	21350		ASM	yes	ZG-DN	383/550/67	>> 842436
185	25950		ASW	yes	ZG-DN	383/550/67	>> 842467
185	26000		ASM	yes	ZG-DN	383/550/67	>> 842474

QUEST LED EVO M

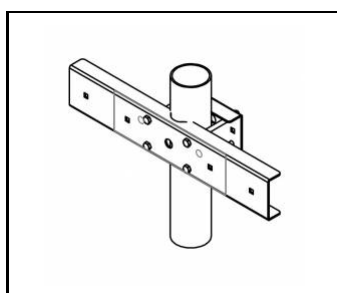
GENERAL CARD

ACCESSORIES AVAILABLE

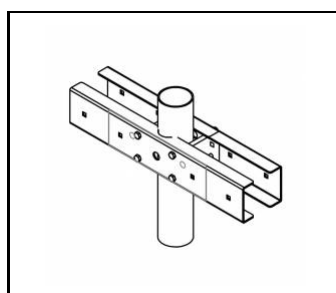
index	Name
840463	Quest LED Evo M recessed frame RAL7016
840401	QUEST LED EVO M/L pole holder 1x
840418	QUEST LED EVO M/L pole holder 2x
840432	QUEST LED EVO M protective grid RAL7016
840074	QUEST LED EVO M protective grid RAL9003
840388	QUEST LED EVO M/L RCR set 1x
840494	QUEST LED EVO M cover RAL7016
840098	QUEST LED EVO wall mount RAL7016 1m



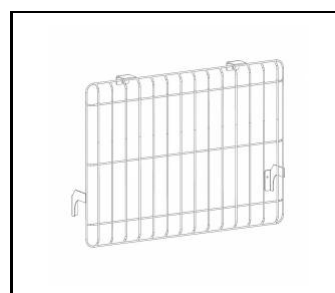
Quest LED Evo M recessed frame RAL7016 (840463)



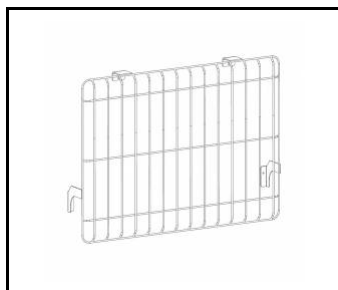
QUEST LED EVO M/L pole holder 1x (840401)



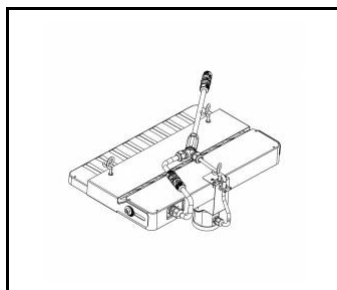
QUEST LED EVO M/L pole holder 2x (840418)



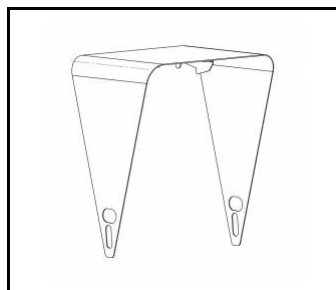
QUEST LED EVO M protective grid RAL7016 (840432)



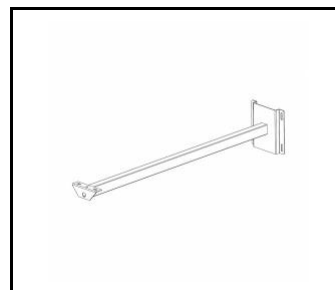
QUEST LED EVO M protective grid RAL9003 (840074)



QUEST LED EVO M/L RCR set 1x (840388)



QUEST LED EVO M cover RAL7016 (840494)



QUEST LED EVO wall mount RAL7016 1m (840098)

Card creation date: 30 April 2026

The company reserves the right to make design changes or upgrades in the presented product. Product data sheet does not constitute an offer. * Parameter tolerance is +/- 10%



This product is a subject to electric and electronic waste equipment regulations (WEEE).



Certificate CE - Nr: 75/2025