

TOWER LITE MULTIBATTERY

GENERAL CARD



TECHNICAL PARAMETERS

Ingress protection:	IP20
Impact resistance:	IK07
Rated power of the luminaire [W]*:	68.00
Colour temperature [K]:	4000
Luminous flux [lm]*:	10285
Supply voltage [V]:	18
Electrical protection class:	III
Colour of the body:	black; grey
Diffuser material:	PC
Diffuser type:	MAT
Dimensions (H/W/T/S) [mm]:	1130/263/169;

CHARACTERISTICS

A set of compact floodlights providing even and stable directional illumination. The lamp body made from co-polymer with rubber for high durability. The lamps are fitted with an anti-glare frosted PC diffuser with UV stabiliser, allowing up to 80% of the light emitted by the LEDs to pass through, despite the matt surface, providing a soft and diffuse light. The set is set on a 2-metre stand allowing easy positioning of the light and selection of the right angle for the work surface. Kit equipped with an on/off switch with 4-stage light output adjustment. Lamp compatible with 18V batteries from manufacturers such as:

- directBosch (18V Professional),
- with a dedicated adapter: Makita, Milwaukee, DeWalt, Festool, Hikoki, Metabo (CAS), Hilti.

The unit has a battery discharge indication.

APPLICATION

Thanks to its various functions, the lamp is the ideal solution for illuminating all workplaces. The high luminous flux and maximum degree of impact resistance are particularly important for illuminating construction sites or intervening services at various emergencies. The lamp's design allows it to be used in the harshest of weather conditions. The multi-position arm provides a wide range of mounting options so that the light beam can be precisely directed, leaving the worker's hands free. Its small size and light weight make it easy to use in workshops, car showrooms, for lighting workplaces in industrial halls or finishing work.

TOWER LITE MULTIBATTERY

GENERAL CARD

AVAILABLE VERSIONS



Click index >>, to see details

Rated power of the luminaire [W]*	Colour temperature [K]	Luminous flux [lm]*	Colour of the body	Battery	Tilt angle adjustment [°]	Dimensions (H/W/T/S) [mm]	Index
68	4000	10285	black	18V	yes	1130/263/169	>> 250248
68	4000	10285	grey	18V	yes	1130/263/169	>> 250255

TOWER LITE MULTIBATTERY

GENERAL CARD

ACCESSORIES AVAILABLE

index	Name
608803	Adapter for Magnum Battery BOSCH / MIL - DEW (NEW)
608810	Adapter for Magnum Battery BOSCH / MAKITA (NEW)
608827	Adapter for Magnum Battery BOSCH / FESTOOL (NEW)
608841	Adapter for Magnum Battery BOSCH / METABO (NEW)
608858	Adapter for Magnum Battery BOSCH / Hikoki 18V (NEW)
608834	Adapter for Magnum Battery BOSCH / Hilti 22V (NEW)
	ACCU BOSCH 18V 2Ah
	ACCU BOSCH 18V 5Ah
	ACCU CHARGER BOSCH EU 18V 2Ah/5Ah
608681	Adapter for Makita 18V batteries
608650	Adapter for Milwaukee/DeWalt 18V batteries



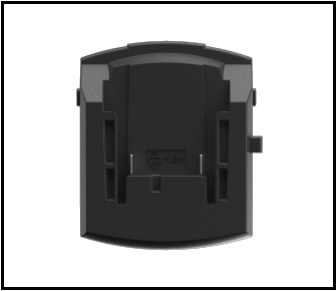
Adapter for Magnum Battery BOSCH / MIL - DEW (NEW) (608803)



Adapter for Magnum Battery BOSCH / MAKITA (NEW) (608810)



Adapter for Magnum Battery BOSCH / FESTOOL (NEW) (608827)



Adapter for Magnum Battery BOSCH / METABO (NEW) (608841)



Adapter for Magnum Battery BOSCH / Hikoki 18V (NEW) (608858)

Card creation date: 24 September 2024

The company reserves the right to make design changes or upgrades in the presented product. Product data sheet does not constitute an offer. * Parameter tolerance is +/- 10%

 This product is a subject to electric and electronic waste equipment regulations (WEEE).

 Certificate CE - Nr: 470/2023