

HULK LED EVO

GENERAL CARD



TECHNICAL PARAMETERS

Rated power of the luminaire [W]*:	100.00; 150.00; 200.00
Luminous flux [lm]*:	16000; 24000; 32000
Colour temperature [K]:	4000
Colour rendering index:	80
Electrical protection class:	I
Impact resistance:	IK07
Ingress protection:	IP65
Material of the body:	powder coated aluminium
Colour of the body:	black
Diffuser material:	glass
Mounting version:	suspended
Dimensions (H/W/T/S) [mm]:	205/153; 235/161; 265/161;
Warranty [years]:	5

CHARACTERISTICS

HIGH-BAY lamp with LED technology. The body is made of die-cast aluminium, powder-coated black, with passive heat dissipation. LED modules with high luminous efficacy (160 lm/W) ensure that the required lighting levels are achieved while saving energy and reducing purchase costs. The diffuser is made of tempered glass, which does not alter the optics of the light source - it provides an overall distribution of 120 degrees. The lamp is terminated with electrical cables (which require an airtight connector if the connection is to be IP65 tight) and signal cables for 1-10V light intensity control. The design of the lamp is suitable for pendant mounting using the threaded, eyebolt hook supplied. The lamp should be suspended by means of a cord or chain dedicated to such solutions (not supplied).

APPLICATION

The lamp is designed for suspended mounting (using chains, cables, etc.) indoors, even in high humidity (IP65). It is ideal for use in factories and production halls as well as large-scale warehouses and logistics centres.

HULK LED EVO

GENERAL CARD

AVAILABLE VERSIONS



Click index >>, to see details

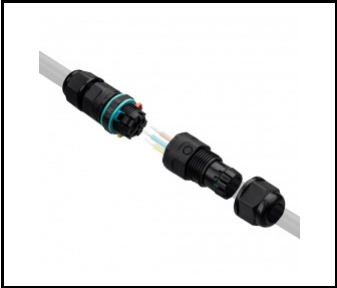
Rated power of the luminaire [W]*	Colour temperature [K]	Luminous flux [lm]*	Diffuser material	DIMM 1- 10V	Colour of the body	Dimensions (H/W/T/S) [mm]	Index
100	4000	16000	glass	yes	black	205/153	>> 729607
150	4000	24000	glass	yes	black	235/161	>> 729614
200	4000	32000	glass	yes	black	265/161	>> 729621

HULK LED EVO

GENERAL CARD

ACCESSORIES AVAILABLE

index	Name
626104	IP68 quick connector 0.5-2.5mm2 Dia5-10mm 3P
626111	IP68 quick connector 0.5-2.5mm2 Dia8-12mm 5P




IP68 quick connector 0.5-2.5mm2
Dia5-10mm 3P (626104)

Card creation date: 23 May 2025

The company reserves the right to make design changes or upgrades in the presented product. Product data sheet does not constitute an offer. * Parameter tolerance is +/- 10%

 This product is a subject to electric and electronic waste equipment regulations (WEEE).

 Certificate CE - Nr: 84/2023



Lena Lighting S.A.
ul. Kórnicka 52, 63-000 Środa Wielkopolska
tel. +48 61 28 60 333 (Pn-Pt, 8-16), e-mail: hello@lenalighting.pl, www.lenalighting.pl