

# QUEST 2 LED RESIST

GENERAL CARD



## TECHNICAL PARAMETERS

<b>Ingress protection:</b>	IP66
<b>Impact resistance:</b>	IK09
<b>Rated power of the luminaire [W]*:</b>	54.00 - 145.00
<b>Luminous flux [lm]*:</b>	6600 - 19950
<b>Colour temperature [K]:</b>	4000
<b>Colour rendering index:</b>	>80
<b>SDCM:</b>	≤ 3
<b>Electrical protection class:</b>	I
<b>Energy efficiency class:</b>	C; D
<b>Material of the body:</b>	aluminium
<b>Colour of the body:</b>	anthracite grey
<b>Diffuser material:</b>	glass
<b>Diffuser type:</b>	transparent
<b>Beam angle [°]:</b>	120; ASN; ASW
<b>Mounting version:</b>	surface
<b>Working temperature [°C]:</b>	from -20 to +35
<b>Dimensions (H/W/T/S) [mm]:</b>	321/424/37; 415/424/37;

## CHARACTERISTICS

High quality floodlight with integrated LED source. The body is made of die-cast aluminum, powder coated in anthracite gray (RAL 7016) and the mounting bracket is made of black painted steel. The diffuser is tempered glass with a thickness of 5mm. Mounting bracket, corrosion-resistant, with adjustable angle from -140; to +185. Standard equipped with H07RN-F cable and IP66 quick-connector.

## APPLICATION

Dedicated for use in swimming pools. Lighting of educational and administrative facilities, halls, garages, passageways, warehouses, stores, food industry and food commodity-related commercial and service facilities.

# QUEST 2 LED RESIST

GENERAL CARD

## AVAILABLE VERSIONS



Click index >>, to see details

### QUEST 2 LED RESIST 120°

Rated power of the luminaire [W]*	Luminous flux [lm]*	Beam angle [°]	Dimensions (H/W/T/S) [mm]	Index
54	6600	120	321/424/37	<a href="#">&gt;&gt; 695100</a>
54	6600	120	321/424/37	<a href="#">&gt;&gt; 695155</a>
108	14600	120	321/424/37	<a href="#">&gt;&gt; 695216</a>
108	14600	120	321/424/37	<a href="#">&gt;&gt; 695186</a>
145	19950	120	415/424/37	<a href="#">&gt;&gt; 695285</a>
145	19950	120	415/424/37	<a href="#">&gt;&gt; 695254</a>

### QUEST 2 LED RESIST ASN°

Rated power of the luminaire [W]*	Luminous flux [lm]*	Beam angle [°]	Dimensions (H/W/T/S) [mm]	Index
54	6650	ASN	321/424/37	<a href="#">&gt;&gt; 695117</a>
54	6650	ASN	321/424/37	<a href="#">&gt;&gt; 695162</a>
108	14100	ASN	321/424/37	<a href="#">&gt;&gt; 695223</a>
108	14100	ASN	321/424/37	<a href="#">&gt;&gt; 695193</a>
145	19350	ASN	415/424/37	<a href="#">&gt;&gt; 695292</a>
145	19350	ASN	415/424/37	<a href="#">&gt;&gt; 695261</a>

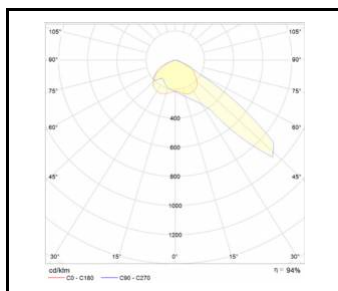
### QUEST 2 LED RESIST ASW°

Rated power of the luminaire [W]*	Luminous flux [lm]*	Beam angle [°]	Dimensions (H/W/T/S) [mm]	Index
54	6950	ASW	321/424/37	<a href="#">&gt;&gt; 695148</a>
54	6950	ASW	321/424/37	<a href="#">&gt;&gt; 695179</a>
108	14300	ASW	321/424/37	<a href="#">&gt;&gt; 695247</a>
108	14300	ASW	321/424/37	<a href="#">&gt;&gt; 695209</a>
145	19550	ASW	415/424/37	<a href="#">&gt;&gt; 695308</a>
145	19550	ASW	415/424/37	<a href="#">&gt;&gt; 695278</a>

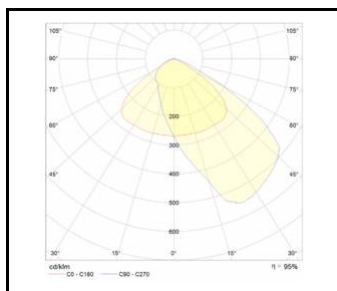
# QUEST 2 LED RESIST

GENERAL CARD

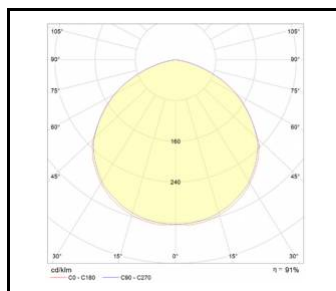
## LUMINOUS INTENSITY DISTRIB. CURVE



QUEST 2 LED ASN rozsył  
asymetryczny wąski



QUEST 2 LED ASW rozsył  
asymetryczny szeroki



QUEST 2 LED rozsył symetryczny 120°

# QUEST 2 LED RESIST

GENERAL CARD

## ACCESSORIES AVAILABLE

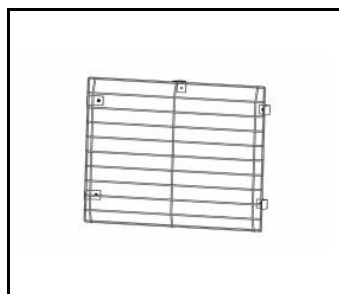
index	Name
699993	QUEST 2 LED M - recessed frame
699986	QUEST 2 LED L - recessed frame
699962	QUEST 2 LED L protective grid RAL7016
699979	QUEST 2 LED M protective grid RAL7016
567728	QUEST 2 LED M/L Pole holder
<a href="#">965913</a>	QUEST 2 LED M/L MAX wall mount RAL7016
559938	QUEST PLUS LED M/L wall holder RAL9006



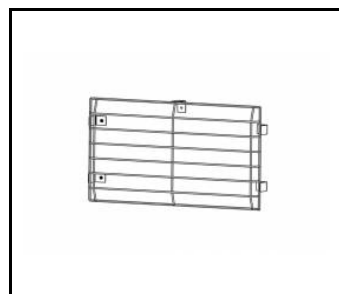
QUEST 2 LED M - recessed frame (699993)



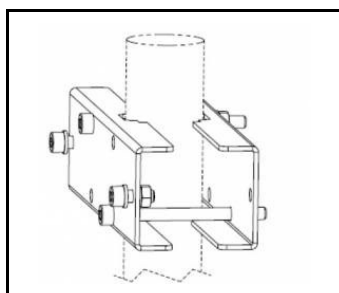
QUEST 2 LED L - recessed frame (699986)



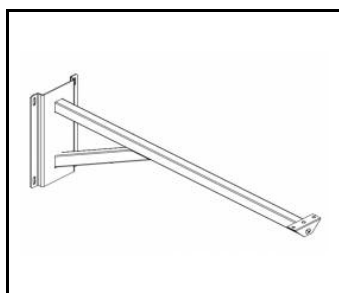
QUEST 2 LED L protective grid RAL7016 (699962)



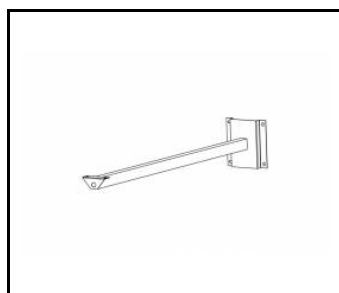
QUEST 2 LED M protective grid RAL7016 (699979)



QUEST 2 LED M/L Pole holder (567728)



QUEST 2 LED M/L MAX wall mount RAL7016 (965913)



QUEST PLUS LED M/L wall holder RAL9006 (559938)

Card creation date: 16 October 2024

The company reserves the right to make design changes or upgrades in the presented product. Product data sheet does not constitute an offer. \* Parameter tolerance is +/- 10%



This product is a subject to electric and electronic waste equipment regulations (WEEE).



Certificate CE - Nr: 296/2023

