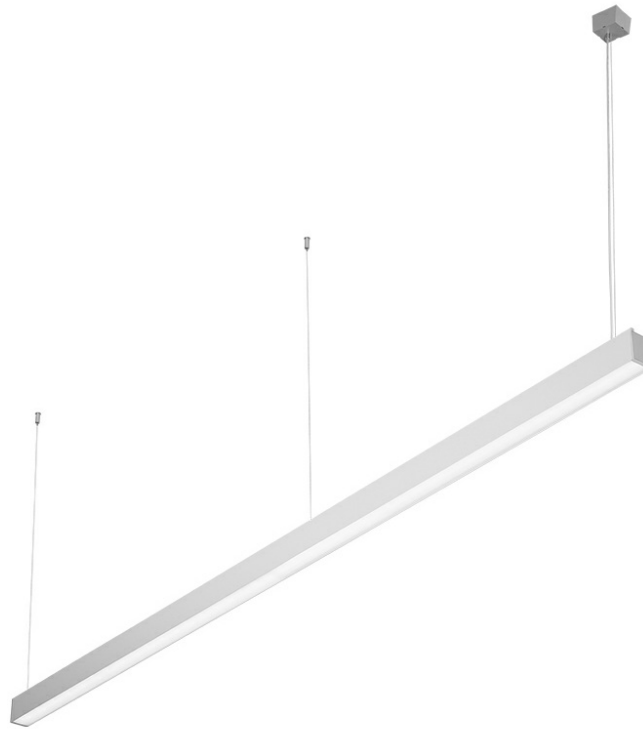


BARIS 52 LED

GENERAL CARD



TECHNICAL PARAMETERS

Rated power of the luminaire [W]*:	14.00 - 84.00
Luminous flux [lm]*:	1450 - 9600
Colour temperature [K]:	3000; 4000
Colour temperature [K] - range:	2700 - 6500
Energy efficiency class:	C; D; E; G
Material of the body:	aluminium
Colour of the body:	black; grey; red; white
Diffuser material:	PC
Diffuser type:	OPAL; PRM; UGR
Mounting version:	surface; suspended
Dimensions (H/W/T/S) [mm]:	69/52/1143-5623
Warranty [years]:	5
Impact resistance:	IK03

CHARACTERISTICS

Suspended or surface-mounted luminaire with classic proportions and modern design. The design of the luminaire allows you to create lines up to 6 meters long with no need to join the profile and up to 25 meters without diffuser joints. Straight connectors and luminous L, T, X, V-shaped bends allow you to create virtually unlimited sequences of straight lines, figures and patterns. The body of the luminaire consists of an anodised aluminium profile in grey or an aluminium profile painted in white or black (other colours available on request). Optical system in the form of a prismatic diffuser (PRM); of a dedicated, flexible opal diffuser that evenly illuminates the luminaire or with a raster that meets the stringent UGR <19 glare requirements. The luminaire's modularity and disassembly capabilities allow the replacement of electronic components such as the LED strip, power supply and the diffuser. The luminaire's profile is compatible with intelligent IOT modules, which also allows to optimise the provided level and amount of light, as well as the direct/indirect version that allows some of the light to be directed upwards to illuminate the ceiling.

APPLICATION

The luminaire is dedicated for indoor use. It is used as a main light source and is conducive to office work that requires eyesight concentration. Unique design, energy-saving LED modules and possible integration with external lighting control systems in the DALI standard make this luminaire suitable for use in modern A+ class office buildings, with particular emphasis on representative rooms, conference rooms, passageways and other places, where the IP44 class is required.

Attention: for surface mounted and suspended BARIS 52 LED luminaire (OPAL, PRM, UGR) it is necessary to order separately a diffuser (available as an accessory) with an appropriate length being the sum of all lines. Luminaire diffuser with a maximum length of 25m, available in 0.5m length increments, are cut to length by the contractor. Connectors (T, X, L, V) are fitted with OPAL diffuser. T, X, L, V connectors with diffusers UGR and PRM are available on request.

BARIS 52 LED

GENERAL CARD

AVAILABLE VERSIONS



Click index >>, to see details

BARIS 52 LED OPAL

Rated power of the luminaire [W]*	Colour temperature [K]	Colour temperature [K] - range	Luminous flux [lm]*	Diffuser type	Colour of the body	DIMM DALI	Dimensions (H/W/T/S) [mm]	Mounting version	Index
16	4000		1900	OPAL	grey		69/52/1143	suspended	>> 460005
16	3000		1750	OPAL	black	yes	69/52/1143	suspended	>> 676277
16	3000		1750	OPAL	white		69/52/1143	suspended	>> 461347
19	4000		2200	OPAL	grey		69/52/1283	suspended	>> 460012
19	3000		2050	OPAL	black		69/52/1283	suspended	>> 927911
21	4000		2400	OPAL	grey		69/52/1423	suspended	>> 460029
23	4000		2700	OPAL	grey		69/52/1563	suspended	>> 460036
23	3000		2550	OPAL	white		69/52/1563	suspended	>> 927928
24	4000		2900	OPAL	grey		69/52/1703	suspended	>> 460043
27	4000		3200	OPAL	grey		69/52/1843	suspended	>> 460050
27	3000		3000	OPAL	white	yes	69/52/1843	suspended	>> 467837
29	4000		3400	OPAL	grey		69/52/1983	suspended	>> 460067
29	3000		3200	OPAL	black	yes	69/52/1983	suspended	>> 676819
29	3000		3200	OPAL	black		69/52/1983	suspended	>> 677830
31	4000		3700	OPAL	grey		69/52/2123	suspended	>> 460074
32	4000		3800	OPAL	grey		69/52/2263	suspended	>> 460081
32	3000		3550	OPAL	red		69/52/2263	suspended	>> 674570
35	4000		4100	OPAL	grey		69/52/2403	suspended	>> 460098
35	3000		3800	OPAL	black		69/52/2403	suspended	>> 676710
38	4000		4400	OPAL	grey		69/52/2543	suspended	>> 460104
39	4000		4600	OPAL	grey		69/52/2683	suspended	>> 460111
39	3000		4250	OPAL	black		69/52/2683	suspended	>> 674563
42	4000		4800	OPAL	grey		69/52/2823	suspended	>> 460128
42	3000		4450	OPAL	black		69/52/2823	suspended	>> 466946
44	4000		5100	OPAL	grey		69/52/2963	suspended	>> 460135
44	3000		4750	OPAL	grey		69/52/2963	suspended	>> 677601
46	4000		5400	OPAL	grey		69/52/3103	suspended	>> 460142
46	4000		5400	OPAL	black		69/52/3103	suspended	>> 466960
47	4000		5600	OPAL	grey		69/52/3243	suspended	>> 460159
48	4000		5700	OPAL	grey		69/52/3383	suspended	>> 460166
51	4000		6000	OPAL	grey		69/52/3523	suspended	>> 460173
54	4000		6300	OPAL	grey		69/52/3663	suspended	>> 460180
54	3000		5850	OPAL	black		69/52/3663	suspended	>> 674587

BARIS 52 LED

GENERAL CARD

Rated power of the luminaire [W]*	Colour temperature [K]	Colour temperature [K] - range	Luminous flux [lm]*	Diffuser type	Colour of the body	DIMM DALI	Dimensions (H/W/T/S) [mm]	Mounting version	Index
55	3000		6000	OPAL	grey	yes	69/52/2963	suspended	>> 448805
57	4000		6600	OPAL	grey		69/52/3803	suspended	>> 460197
57	3000		6150	OPAL	black	yes	69/52/3803	suspended	>> 477447
59	4000		6800	OPAL	grey		69/52/3943	suspended	>> 460203
61	4000		7000	OPAL	grey		69/52/4083	suspended	>> 460210
63	4000		7200	OPAL	grey		69/52/4223	suspended	>> 460227
63	3000		6700	OPAL	white	yes	69/52/4223	suspended	>> 461323
65	4000		7500	OPAL	grey		69/52/4363	suspended	>> 460234
67	4000		7800	OPAL	grey		69/52/4503	suspended	>> 460241
69	4000		8100	OPAL	grey		69/52/4643	suspended	>> 460258
70	4000		8200	OPAL	grey		69/52/4783	suspended	>> 460265
70	3000		7550	OPAL	grey		69/52/4783	suspended	>> 461378
70	3000		7550	OPAL	black		69/52/4783	suspended	>> 676642
71	4000		8400	OPAL	grey		69/52/4923	suspended	>> 460272
75	4000		8800	OPAL	grey		69/52/5063	suspended	>> 460289
76	4000		8900	OPAL	grey		69/52/5203	suspended	>> 460296
76	3000		8250	OPAL	black		69/52/5203	suspended	>> 676185
80	4000		9200	OPAL	grey		69/52/5343	suspended	>> 460302
82	4000		9400	OPAL	grey		69/52/5483	suspended	>> 460319
84	4000		9600	OPAL	grey		69/52/5623	suspended	>> 460326
84	3000		8950	OPAL	white	yes	69/52/5623	suspended	>> 461330
84	3000		9000	OPAL	white		69/52/5623	suspended	>> 676192
84	3000		9050	OPAL	black		69/52/5623	suspended	>> 676208
16	4000		1900	OPAL	grey		69/52/1143	surface	>> 460333
19	4000		2200	OPAL	grey		69/52/1283	surface	>> 460340
21	4000		2400	OPAL	grey		69/52/1423	surface	>> 460357
21	3000		2200	OPAL	black	yes	69/52/1423	surface	>> 677625
23	4000		2700	OPAL	grey		69/52/1563	surface	>> 460364
24	4000		2900	OPAL	grey		69/52/1703	surface	>> 460371
27	4000		3200	OPAL	grey		69/52/1843	surface	>> 460388
29	4000		3400	OPAL	grey		69/52/1983	surface	>> 460395
29	3000		3150	OPAL	white		69/52/1983	surface	>> 458620
29		2700 - 6500	3400	OPAL	grey		69/52/1983	surface	>> 677540
31	4000		3700	OPAL	grey		69/52/2123	surface	>> 460401
32	4000		3800	OPAL	grey		69/52/2263	surface	>> 460418
35	4000		4100	OPAL	grey		69/52/2403	surface	>> 460425
38	4000		4400	OPAL	grey		69/52/2543	surface	>> 460432
38	3000		4100	OPAL	black		69/52/2543	surface	>> 932991

BARIS 52 LED

GENERAL CARD

Rated power of the luminaire [W]*	Colour temperature [K]	Colour temperature [K] - range	Luminous flux [lm]*	Diffuser type	Colour of the body	DIMM DALI	Dimensions (H/W/T/S) [mm]	Mounting version	Index
39	4000		4600	OPAL	grey		69/52/2683	surface	>> 460449
42	4000		4800	OPAL	grey		69/52/2823	surface	>> 460456
44	4000		5100	OPAL	grey		69/52/2963	surface	>> 460463
46	4000		5400	OPAL	grey		69/52/3103	surface	>> 460470
47	4000		5600	OPAL	grey		69/52/3243	surface	>> 460487
47	3000		5200	OPAL	black	yes	69/52/3243	surface	>> 677670
48	4000		5700	OPAL	grey		69/52/3383	surface	>> 460494
48	3000		5300	OPAL	black		69/52/3383	surface	>> 458712
51	4000		6000	OPAL	grey		69/52/3523	surface	>> 460500
54	4000		6300	OPAL	grey		69/52/3663	surface	>> 460517
57	4000		6600	OPAL	grey		69/52/3803	surface	>> 460524
59	4000		6800	OPAL	grey		69/52/3943	surface	>> 460531
61	4000		7000	OPAL	grey		69/52/4083	surface	>> 460548
63	4000		7200	OPAL	grey		69/52/4223	surface	>> 460555
65	4000		7500	OPAL	grey		69/52/4363	surface	>> 460562
67	4000		7800	OPAL	grey		69/52/4503	surface	>> 460579
69	4000		8100	OPAL	grey		69/52/4643	surface	>> 460586
70	4000		8200	OPAL	grey		69/52/4783	surface	>> 460593
71	4000		8400	OPAL	grey		69/52/4923	surface	>> 460609
75	4000		8800	OPAL	grey		69/52/5063	surface	>> 460616
76	4000		8900	OPAL	grey		69/52/5203	surface	>> 460623
80	4000		9200	OPAL	grey		69/52/5343	surface	>> 460630
82	4000		9400	OPAL	grey		69/52/5483	surface	>> 460647
84	4000		9600	OPAL	grey		69/52/5623	surface	>> 460654

BARIS 52 LED PRM

Rated power of the luminaire [W]*	Colour temperature [K]	Colour temperature [K] - range	Luminous flux [lm]*	Diffuser type	Colour of the body	DIMM DALI	Dimensions (H/W/T/S) [mm]	Mounting version	Index
16	4000		1900	PRM	grey		69/52/1143	suspended	>> 464003
19	4000		2200	PRM	grey		69/52/1283	suspended	>> 464010
21	4000		2400	PRM	grey		69/52/1423	suspended	>> 464027
23	4000		2700	PRM	grey		69/52/1563	suspended	>> 464034
24	4000		2900	PRM	grey		69/52/1703	suspended	>> 464041
27	4000		3200	PRM	grey		69/52/1843	suspended	>> 464058
27	3000		3000	PRM	black		69/52/1843	suspended	>> 466748
29	4000		3400	PRM	grey		69/52/1983	suspended	>> 464065
29	3000		3200	PRM	black		69/52/1983	suspended	>> 676420
31	4000		3700	PRM	grey		69/52/2123	suspended	>> 464072
32	4000		3800	PRM	grey		69/52/2263	suspended	>> 464089

BARIS 52 LED

GENERAL CARD

Rated power of the luminaire [W]*	Colour temperature [K]	Colour temperature [K] - range	Luminous flux [lm]*	Diffuser type	Colour of the body	DIMM DALI	Dimensions (H/W/T/S) [mm]	Mounting version	Index
35	4000		4100	PRM	grey		69/52/2403	suspended	>> 464096
38	4000		4400	PRM	grey		69/52/2543	suspended	>> 464102
39	4000		4600	PRM	grey		69/52/2683	suspended	>> 464119
42	4000		4800	PRM	grey		69/52/2823	suspended	>> 464126
44	4000		5100	PRM	grey		69/52/2963	suspended	>> 464133
46	4000		5400	PRM	grey		69/52/3103	suspended	>> 464140
47	4000		5600	PRM	grey		69/52/3243	suspended	>> 464157
47	3000		5200	PRM	white	yes	69/52/3243	suspended	>> 470059
47	3000		5200	PRM	white		69/52/3243	suspended	>> 448485
48	4000		5700	PRM	grey		69/52/3383	suspended	>> 464164
51	4000		6000	PRM	grey		69/52/3523	suspended	>> 464171
54	4000		6300	PRM	grey		69/52/3663	suspended	>> 464188
57	4000		6600	PRM	grey		69/52/3803	suspended	>> 464195
59	4000		6800	PRM	grey		69/52/3943	suspended	>> 464201
60	3000		6500	PRM	white		69/52/2263	suspended	>> 448560
61	4000		7000	PRM	grey		69/52/4083	suspended	>> 464218
63	4000		7200	PRM	grey		69/52/4223	suspended	>> 464225
65	4000		7500	PRM	grey		69/52/4363	suspended	>> 464232
67	4000		7800	PRM	grey		69/52/4503	suspended	>> 464249
69	4000		8100	PRM	grey		69/52/4643	suspended	>> 464256
70	4000		8200	PRM	grey		69/52/4783	suspended	>> 464263
71	4000		8400	PRM	grey		69/52/4923	suspended	>> 464270
75	4000		8800	PRM	grey		69/52/5063	suspended	>> 464287
76	4000		8900	PRM	grey		69/52/5203	suspended	>> 464294
80	4000		9200	PRM	grey		69/52/5343	suspended	>> 464300
82	4000		9400	PRM	grey		69/52/5483	suspended	>> 464317
84	4000		9600	PRM	grey		69/52/5623	suspended	>> 464324
16	4000		1900	PRM	grey		69/52/1143	surface	>> 464331
16	3000		1750	PRM	grey		69/52/1143	surface	>> 676888
19	4000		2200	PRM	grey		69/52/1283	surface	>> 464348
19	3000		2050	PRM	grey		69/52/1283	surface	>> 676871
21	4000		2400	PRM	grey		69/52/1423	surface	>> 464355
23	4000		2700	PRM	grey		69/52/1563	surface	>> 464362
24	4000		2900	PRM	grey		69/52/1703	surface	>> 464379
27	4000		3200	PRM	grey		69/52/1843	surface	>> 464386
29	4000		3400	PRM	grey		69/52/1983	surface	>> 464393
29	3000		3250	PRM	grey		69/52/1983	surface	>> 676901
31	4000		3700	PRM	grey		69/52/2123	surface	>> 464409

BARIS 52 LED

GENERAL CARD

Rated power of the luminaire [W]*	Colour temperature [K]	Colour temperature [K] - range	Luminous flux [lm]*	Diffuser type	Colour of the body	DIMM DALI	Dimensions (H/W/T/S) [mm]	Mounting version	Index
32	4000		3800	PRM	grey		69/52/2263	surface	>> 464416
35	4000		4100	PRM	grey		69/52/2403	surface	>> 464423
35	3000		3800	PRM	grey		69/52/2403	surface	>> 676864
38	4000		4400	PRM	grey		69/52/2543	surface	>> 464430
38	3000		4100	PRM	grey		69/52/2543	surface	>> 676895
39	4000		4600	PRM	grey		69/52/2683	surface	>> 464447
39	3000		4250	PRM	grey		69/52/2683	surface	>> 676918
42	4000		4800	PRM	grey		69/52/2823	surface	>> 464454
42	3000		4600	PRM	grey		69/52/2823	surface	>> 676925
44	4000		5100	PRM	grey		69/52/2963	surface	>> 464461
44	3000		4800	PRM	grey		69/52/2963	surface	>> 676932
46	4000		5400	PRM	grey		69/52/3103	surface	>> 464478
46	3000		5000	PRM	black		69/52/3103	surface	>> 448492
47	4000		5600	PRM	grey		69/52/3243	surface	>> 464485
48	4000		5700	PRM	grey		69/52/3383	surface	>> 464492
51	4000		6000	PRM	grey		69/52/3523	surface	>> 464508
54	4000		6300	PRM	grey		69/52/3663	surface	>> 464515
57	4000		6600	PRM	grey		69/52/3803	surface	>> 464522
59	4000		6800	PRM	grey		69/52/3943	surface	>> 464539
61	4000		7000	PRM	grey		69/52/4083	surface	>> 464546
63	4000		7200	PRM	grey		69/52/4223	surface	>> 464553
65	4000		7500	PRM	grey		69/52/4363	surface	>> 464560
67	4000		7800	PRM	grey		69/52/4503	surface	>> 464577
69	4000		8100	PRM	grey		69/52/4643	surface	>> 464584
70	4000		8200	PRM	grey		69/52/4783	surface	>> 464591
71	4000		8400	PRM	grey		69/52/4923	surface	>> 464607
75	4000		8800	PRM	grey		69/52/5063	surface	>> 464614
76	4000		8900	PRM	grey		69/52/5203	surface	>> 464621
80	4000		9200	PRM	grey		69/52/5343	surface	>> 464638
82	4000		9400	PRM	grey		69/52/5483	surface	>> 464645
84	4000		9600	PRM	grey		69/52/5623	surface	>> 464652

BARIS 52 LED UGR

Rated power of the luminaire [W]*	Colour temperature [K]	Colour temperature [K] - range	Luminous flux [lm]*	Diffuser type	Colour of the body	DIMM DALI	Dimensions (H/W/T/S) [mm]	Mounting version	Index
14	4000		1800	UGR	grey		69/52/1143	suspended	>> 460661
16	4000		2000	UGR	grey		69/52/1283	suspended	>> 460678
16		2700 - 6500	1450	UGR	white	yes	69/52/1143	suspended	>> 470561
18	4000		2300	UGR	grey		69/52/1423	suspended	>> 460685

BARIS 52 LED

GENERAL CARD

Rated power of the luminaire [W]*	Colour temperature [K]	Colour temperature [K] - range	Luminous flux [lm]*	Diffuser type	Colour of the body	DIMM DALI	Dimensions (H/W/T/S) [mm]	Mounting version	Index
20	4000		2500	UGR	grey		69/52/1563	suspended	>> 460692
21	4000		2700	UGR	grey		69/52/1703	suspended	>> 460708
23	4000		2900	UGR	grey		69/52/1843	suspended	>> 460715
25	4000		3200	UGR	grey		69/52/1983	suspended	>> 460722
27	4000		3400	UGR	grey		69/52/2123	suspended	>> 460739
28	4000		3600	UGR	grey		69/52/2263	suspended	>> 460746
28	3000		3400	UGR	black		69/52/2263	suspended	>> 676727
30	4000		3800	UGR	grey		69/52/2403	suspended	>> 460753
30	3000		3500	UGR	grey	yes	69/52/2403	suspended	>> 675805
30	3000		3500	UGR	grey		69/52/2403	suspended	>> 675980
30		2700 - 6500	2700	UGR	white	yes	69/52/2403	suspended	>> 470554
32	4000		4000	UGR	grey		69/52/2543	suspended	>> 460760
32	3000		3700	UGR	black	yes	69/52/2543	suspended	>> 455766
32		2700 - 6500	2900	UGR	black	yes	69/52/2543	suspended	>> 470530
34	4000		4300	UGR	grey		69/52/2683	suspended	>> 460777
36	4000		4600	UGR	grey		69/52/2823	suspended	>> 460784
36	3000		4300	UGR	black		69/52/2823	suspended	>> 676659
38	4000		4800	UGR	grey		69/52/2963	suspended	>> 460791
40	4000		5000	UGR	grey		69/52/3103	suspended	>> 460807
41	4000		5200	UGR	grey		69/52/3243	suspended	>> 460814
42	4000		5400	UGR	grey		69/52/3383	suspended	>> 460821
44	4000		5600	UGR	grey		69/52/3523	suspended	>> 460838
44	3000		5250	UGR	grey		69/52/3523	suspended	>> 448508
46	4000		5800	UGR	grey		69/52/3663	suspended	>> 460845
48	4000		6000	UGR	grey		69/52/3803	suspended	>> 460852
50	4000		6300	UGR	grey		69/52/3943	suspended	>> 460869
52	4000		6600	UGR	grey		69/52/4083	suspended	>> 460876
54	4000		6900	UGR	grey		69/52/4223	suspended	>> 460883
56	4000		7100	UGR	grey		69/52/4363	suspended	>> 460890
58	4000		7300	UGR	grey		69/52/4503	suspended	>> 460906
58	3000		6950	UGR	black		69/52/4503	suspended	>> 676666
59	4000		7500	UGR	grey		69/52/4643	suspended	>> 460913
60	4000		7600	UGR	grey		69/52/4783	suspended	>> 460920
62	4000		7900	UGR	grey		69/52/4923	suspended	>> 460937
64	4000		8000	UGR	grey		69/52/5063	suspended	>> 460944
66	4000		8400	UGR	grey		69/52/5203	suspended	>> 460951
68	4000		8600	UGR	grey		69/52/5343	suspended	>> 460968
70	4000		8900	UGR	grey		69/52/5483	suspended	>> 460975

BARIS 52 LED

GENERAL CARD

Rated power of the luminaire [W]*	Colour temperature [K]	Colour temperature [K] - range	Luminous flux [lm]*	Diffuser type	Colour of the body	DIMM DALI	Dimensions (H/W/T/S) [mm]	Mounting version	Index
71	3000		8450	UGR	grey		69/52/3523	suspended	>> 448522
72	4000		9200	UGR	grey		69/52/5623	suspended	>> 460982
14	4000		1800	UGR	grey		69/52/1143	surface	>> 460999
16	4000		2000	UGR	grey		69/52/1283	surface	>> 461002
18	4000		2300	UGR	grey		69/52/1423	surface	>> 461019
20	4000		2500	UGR	grey		69/52/1563	surface	>> 461026
21	4000		2700	UGR	grey		69/52/1703	surface	>> 461033
23	4000		2900	UGR	grey		69/52/1843	surface	>> 461040
25	4000		3200	UGR	grey		69/52/1983	surface	>> 461057
25	3000		3000	UGR	black	yes	69/52/1983	surface	>> 609848
27	4000		3400	UGR	grey		69/52/2123	surface	>> 461064
28	4000		3600	UGR	grey		69/52/2263	surface	>> 461071
30	4000		3800	UGR	grey		69/52/2403	surface	>> 461088
32	4000		4000	UGR	grey		69/52/2543	surface	>> 461095
34	4000		4300	UGR	grey		69/52/2683	surface	>> 461101
36	4000		4600	UGR	grey		69/52/2823	surface	>> 461118
38	4000		4800	UGR	grey		69/52/2963	surface	>> 461125
40	4000		5000	UGR	grey		69/52/3103	surface	>> 461132
41	4000		5200	UGR	grey		69/52/3243	surface	>> 461149
42	4000		5400	UGR	grey		69/52/3383	surface	>> 461156
44	4000		5600	UGR	grey		69/52/3523	surface	>> 461163
46	4000		5800	UGR	grey		69/52/3663	surface	>> 461170
48	4000		6000	UGR	grey		69/52/3803	surface	>> 461187
50	4000		6300	UGR	grey		69/52/3943	surface	>> 461194
52	4000		6600	UGR	grey		69/52/4083	surface	>> 461200
54	4000		6900	UGR	grey		69/52/4223	surface	>> 461217
56	4000		7100	UGR	grey		69/52/4363	surface	>> 461224
58	4000		7300	UGR	grey		69/52/4503	surface	>> 461231
59	4000		7500	UGR	grey		69/52/4643	surface	>> 461248
60	4000		7600	UGR	grey		69/52/4783	surface	>> 461255
62	4000		7900	UGR	grey		69/52/4923	surface	>> 461262
64	4000		8000	UGR	grey		69/52/5063	surface	>> 461279
66	4000		8400	UGR	grey		69/52/5203	surface	>> 461286
68	4000		8600	UGR	grey		69/52/5343	surface	>> 461293
70	4000		8900	UGR	grey		69/52/5483	surface	>> 461309
72	4000		9200	UGR	grey		69/52/5623	surface	>> 461316

BARIS 52 LED

GENERAL CARD

ACCESSORIES AVAILABLE

index	Name
318023	Baris 52 - linear connector. straight
318030	Baris 52 - white power suspension
318047	Baris 52 - black power suspension
318054	Baris 52 - anodized power suspension
318061	Baris 52 - Dali white power suspension
318078	Baris 52 - Dali black power suspension
318085	Dali anodized power suspension
318092	Baris 52 – suspension
465000	Baris 52 diffuser PLX length of 1500mm (1.5m)
465017	Baris 52 diffuser PLX length of 2000mm (2.0m)
465024	Baris 52 diffuser PLX length of 2500mm (2.5m)
465031	Baris 52 diffuser PLX length of 3000mm (3.0m)
465048	Baris 52 diffuser PLX length of 3500mm (3.5m)
465055	Baris 52 diffuser PLX length of 4000mm (4.0m)
465062	Baris 52 diffuser PLX length of 4500mm (4.5m)
465079	Baris 52 diffuser PLX length of 5000mm (5.0m)
465086	Baris 52 diffuser PLX length of 5500mm (5.5m)
465093	Baris 52 diffuser PLX length of 6000mm (6.0m)
465109	Baris 52 diffuser PLX length of 6500mm (6.5m)
465116	Baris 52 diffuser PLX length of 7000mm (7.0m)
465123	Baris 52 diffuser PLX length of 7500mm (7.5m)
465130	Baris 52 diffuser PLX length of 8000mm (8.0m)
465147	Baris 52 diffuser PLX length of 8500mm (8.5m)
465154	Baris 52 diffuser PLX length of 9000mm (9.0m)
465161	Baris 52 diffuser PLX length of 9500mm (9.5m)
465178	Baris 52 diffuser PLX length of 10000mm (10.0m)
465185	Baris 52 diffuser PLX length of 10500mm (10.5m)
465192	Baris 52 diffuser PLX length of 11000mm (11.0m)
465208	Baris 52 diffuser PLX length of 11500mm (11.5m)
465215	Baris 52 diffuser PLX length of 12000mm (12.0m)
465222	Baris 52 diffuser PLX length of 12500mm (12.5m)
465239	Baris 52 diffuser PLX length of 13000mm (13.0m)
465246	Baris 52 diffuser PLX length of 13500mm (13.5m)
465253	Baris 52 diffuser PLX length of 14000mm (14.0m)
465260	Baris 52 diffuser PLX length of 14500mm (14.5m)
465277	Baris 52 diffuser PLX length of 15000mm (15.0m)
465284	Baris 52 diffuser PLX length of 15500mm (15.5m)

BARIS 52 LED

GENERAL CARD

465291	Baris 52 diffuser PLX length of 16000mm (16.0m)
465307	Baris 52 diffuser PLX length of 16500mm (16.5m)
465314	Baris 52 diffuser PLX length of 17000mm (17.0m)
465321	Baris 52 diffuser PLX length of 17500mm (17.5m)
465338	Baris 52 diffuser PLX length of 18000mm (18.0m)
465345	Baris 52 diffuser PLX length of 18500mm (18.5m)
465352	Baris 52 diffuser PLX length of 19000mm (19.0m)
465369	Baris 52 diffuser PLX length of 19500mm (19.5m)
465376	Baris 52 diffuser PLX length of 20000mm (20.0m)
465383	Baris 52 diffuser PLX length of 20500mm (20.5m)
465390	Baris 52 diffuser PLX length of 21000mm (21.0m)
465406	Baris 52 diffuser PLX length of 21500mm (21.5m)
465413	Baris 52 diffuser PLX length of 22000mm (22.0m)
465420	Baris 52 diffuser PLX length of 22500mm (22.5m)
465437	Baris 52 diffuser PLX length of 23000mm (23.0m)
465444	Baris 52 diffuser PLX length of 23500mm (23.5m)
465451	Baris 52 diffuser PLX length of 24000mm (24.0m)
465468	Baris 52 diffuser PLX length of 24500mm (24.5m)
465475	Baris 52 diffuser PLX length of 25000mm (25.0m)
465482	Baris 52 diffuser UGR length of 1500mm (1.5m)
465499	Baris 52 diffuser UGR length of 2000mm (2.0m)
465505	Baris 52 diffuser UGR length of 2500mm (2.5m)
465512	Baris 52 diffuser UGR length of 3000mm (3.0m)
465529	Baris 52 diffuser UGR length of 3500mm (3.5m)
465536	Baris 52 diffuser UGR length of 4000mm (4.0m)
465543	Baris 52 diffuser UGR length of 4500mm (4.5m)
465550	Baris 52 diffuser UGR length of 5000mm (5.0m)
465567	Baris 52 diffuser UGR length of 5500mm (5.5m)
465574	Baris 52 diffuser UGR length of 6000mm (6.0m)
465581	Baris 52 diffuser UGR length of 6500mm (6.5m)
465598	Baris 52 diffuser UGR length of 7000mm (7.0m)
465604	Baris 52 diffuser UGR length of 7500mm (7.5m)
465611	Baris 52 diffuser UGR length of 8000mm (8.0m)
465628	Baris 52 diffuser UGR length of 8500mm (8.5m)
465635	Baris 52 diffuser UGR length of 9000mm (9.0m)
465642	Baris 52 diffuser UGR length of 9500mm (9.5m)
465659	Baris 52 diffuser UGR length of 10000mm (10.0m)
465666	Baris 52 diffuser UGR length of 10500mm (10.5m)
465673	Baris 52 diffuser UGR length of 11000mm (11.0m)

BARIS 52 LED

GENERAL CARD

465680	Baris 52 diffuser UGR length of 11500mm (11.5m)
465697	Baris 52 diffuser UGR length of 12000mm (12.0m)
465703	Baris 52 diffuser UGR length of 12500mm (12.5m)
465710	Baris 52 diffuser UGR length of 13000mm (13.0m)
465727	Baris 52 diffuser UGR length of 13500mm (13.5m)
465734	Baris 52 diffuser UGR length of 14000mm (14.0m)
465741	Baris 52 diffuser UGR length of 14500mm (14.5m)
465758	Baris 52 diffuser UGR length of 15000mm (15.0m)
465765	Baris 52 diffuser UGR length of 15500mm (15.5m)
465772	Baris 52 diffuser UGR length of 16000mm (16.0m)
465789	Baris 52 diffuser UGR length of 16500mm (16.5m)
465796	Baris 52 diffuser UGR length of 17000mm (17.0m)
465802	Baris 52 diffuser UGR length of 17500mm (17.5m)
465819	Baris 52 diffuser UGR length of 18000mm (18.0m)
465826	Baris 52 diffuser UGR length of 18500mm (18.5m)
465833	Baris 52 diffuser UGR length of 19000mm (19.0m)
465840	Baris 52 diffuser UGR length of 19500mm (19.5m)
465857	Baris 52 diffuser UGR length of 20000mm (20.0m)
465864	Baris 52 diffuser UGR length of 20500mm (20.5m)
465871	Baris 52 diffuser UGR length of 21000mm (21.0m)
465888	Baris 52 diffuser UGR length of 21500mm (21.5m)
465895	Baris 52 diffuser UGR length of 22000mm (22.0m)
465901	Baris 52 diffuser UGR length of 22500mm (22.5m)
465918	Baris 52 diffuser UGR length of 23000mm (23.0m)
465925	Baris 52 diffuser UGR length of 23500mm (23.5m)
465932	Baris 52 diffuser UGR length of 24000mm (24.0m)
465949	Baris 52 diffuser UGR length of 24500mm (24.5m)
465956	Baris 52 diffuser UGR length of 25000mm (25.0m)
465963	Baris 52 diffuser PRM length of 1500mm (1.5m)
465970	Baris 52 diffuser PRM length of 2000mm (2.0m)
465987	Baris 52 diffuser PRM length of 2500mm (2.5m)
465994	Baris 52 diffuser PRM length of 3000mm (3.0m)
466007	Baris 52 diffuser PRM length of 3500mm (3.5m)
466014	Baris 52 diffuser PRM length of 4000mm (4.0m)
466021	Baris 52 diffuser PRM length of 4500mm (4.5m)
466038	Baris 52 diffuser PRM length of 5000mm (5.0m)
466045	Baris 52 diffuser PRM length of 5500mm (5.5m)
466052	Baris 52 diffuser PRM length of 6000mm (6.0m)
466069	Baris 52 diffuser PRM length of 6500mm (6.5m)

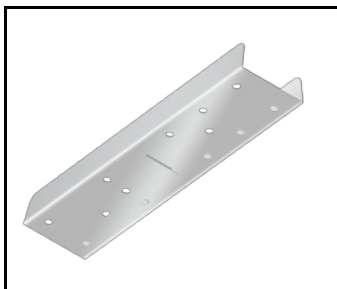
BARIS 52 LED

GENERAL CARD

466076	Baris 52 diffuser PRM length of 7000mm (7.0m)
466083	Baris 52 diffuser PRM length of 7500mm (7.5m)
466090	Baris 52 diffuser PRM length of 8000mm (8.0m)
466106	Baris 52 diffuser PRM length of 8500mm (8.5m)
466113	Baris 52 diffuser PRM length of 9000mm (9.0m)
466120	Baris 52 diffuser PRM length of 9500mm (9.5m)
466137	Baris 52 diffuser PRM length of 10000mm (10.0m)
466144	Baris 52 diffuser PRM length of 10500mm (10.5m)
466151	Baris 52 diffuser PRM length of 11000mm (11.0m)
466168	Baris 52 diffuser PRM length of 11500mm (11.5m)
466175	Baris 52 diffuser PRM length of 12000mm (12.0m)
466182	Baris 52 diffuser PRM length of 12500mm (12.5m)
466199	Baris 52 diffuser PRM length of 13000mm (13.0m)
466205	Baris 52 diffuser PRM length of 13500mm (13.5m)
466212	Baris 52 diffuser PRM length of 14000mm (14.0m)
466229	Baris 52 diffuser PRM length of 14500mm (14.5m)
466236	Baris 52 diffuser PRM length of 15000mm (15.0m)
466243	Baris 52 diffuser PRM length of 15500mm (15.5m)
466250	Baris 52 diffuser PRM length of 16000mm (16.0m)
466267	Baris 52 diffuser PRM length of 16500mm (16.5m)
466274	Baris 52 diffuser PRM length of 17000mm (17.0m)
466281	Baris 52 diffuser PRM length of 17500mm (17.5m)
466298	Baris 52 diffuser PRM length of 18000mm (18.0m)
466304	Baris 52 diffuser PRM length of 18500mm (18.5m)
466311	Baris 52 diffuser PRM length of 19000mm (19.0m)
466328	Baris 52 diffuser PRM length of 19500mm (19.5m)
466335	Baris 52 diffuser PRM length of 20000mm (20.0m)
466342	Baris 52 diffuser PRM length of 20500mm (20.5m)
466359	Baris 52 diffuser PRM length of 21000mm (21.0m)
466366	Baris 52 diffuser PRM length of 21500mm (21.5m)
466373	Baris 52 diffuser PRM length of 22000mm (22.0m)
466380	Baris 52 diffuser PRM length of 22500mm (22.5m)
466397	Baris 52 diffuser PRM length of 23000mm (23.0m)
466403	Baris 52 diffuser PRM length of 23500mm (23.5m)
466410	Baris 52 diffuser PRM length of 24000mm (24.0m)
466427	Baris 52 diffuser PRM length of 24500mm (24.5m)
466434	Baris 52 diffuser PRM length of 25000mm (25.0m)

BARIS 52 LED

GENERAL CARD



Baris 52 - linear connector.
straight (318023)

Card creation date: 02 October 2024

The company reserves the right to make design changes or upgrades in the presented product. Product data sheet does not constitute an offer. * Parameter tolerance is +/- 10%



This product is a subject to electric and electronic waste equipment regulations (WEEE).



Certificate CE - Nr: max 232/2023

