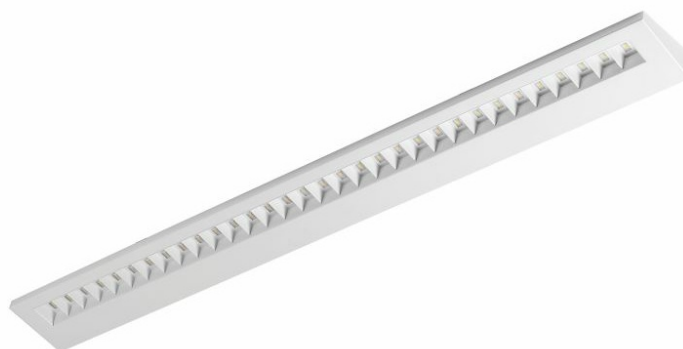


TERRA 2 LED LONG ASYMMETRIC

GENERAL CARD



TECHNICAL PARAMETERS

Ingress protection:	IP20
Nominal power [W]:	36.00
Luminous flux [lm]*:	4200
Colour temperature [K]:	4000
Colour rendering index:	>80
SDCM:	≤ 3
Energy efficiency class:	E
Electrical protection class:	II
Material of the body:	powder coated steel
Colour of the body:	white gloss; white mat
Optics:	HE
Mounting version:	surface
Dimensions (H/W/T/S) [mm]:	1160/120/36;
Warranty [years]:	5

CHARACTERISTICS

A luminaire equipped with energy-efficient LED modules characterised by a high luminous flux. The low side profile provides an aesthetically pleasing, timeless appearance. Robust, compact construction. Made of powder-coated steel sheet. Patented high-performance HE reflector guarantees high efficiency while effectively eliminating glare. The surface-mounted version features solutions for fast and safe installation. The asymmetric version is used to illuminate school and academic blackboards, paintings and other objects on walls.

APPLICATION

General purpose surface mounted luminaire for indoor application in offices or other utility rooms. Appropriate as the main light source even when the work requires eyesight concentration. The asymmetric version is used to illuminate school and academic tables, paintings and other objects on the walls.

TERRA 2 LED LONG ASYMMETRIC

GENERAL CARD

AVAILABLE VERSIONS



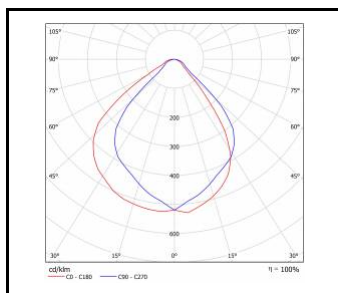
Click index >>, to see details

Nominal power [W]	Colour temperature [K]	Luminous flux [lm]*	Optics	Colour of the body	Dimensions (H/W/T/S) [mm]	Energy efficiency class	Index
36	4000	4200	HE	white mat	1160/120/36	E	>> 226328
36	4000	4200	HE	white gloss	1160/120/36	E	>> 226335

TERRA 2 LED LONG ASYMMETRIC

GENERAL CARD

LUMINOUS INTENSITY DISTRIB. CURVE



TERRA 2 LED LONG ASYMMETRIC

Card creation date: 08 January 2025

The company reserves the right to make design changes or upgrades in the presented product. Product data sheet does not constitute an offer. * Parameter tolerance is +/- 10%



This product is a subject to electric and electronic waste equipment regulations (WEEE).



Certificate CE - Nr: 354/2023