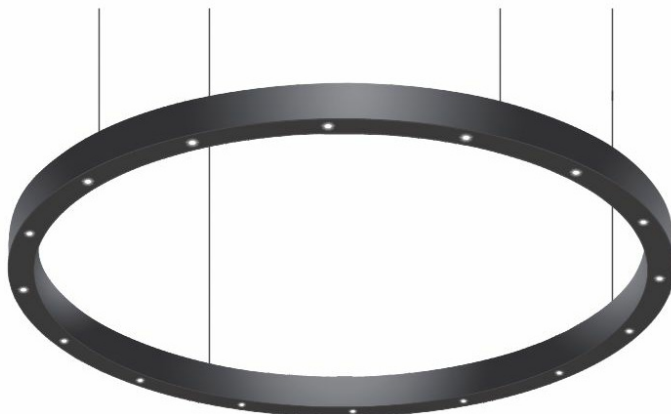


# ANELLO LED POINT 770MM 1650LM 830 30° MAT BLACK (10X2,4W)

DETAILED CARD



## TECHNICAL PARAMETERS

<b>Index:</b>	730276
<b>Ingress protection:</b>	IP20
<b>Nominal power [W]:</b>	24
<b>Luminous flux [lm]*:</b>	1650
<b>Colour temperature [K]:</b>	3000
<b>Energy efficiency class:</b>	A
<b>Material of the body:</b>	aluminium

## CHARACTERISTICS

Suspended LED luminaire in the shape of a circle, allowing for an interesting arrangement of large representative interiors. The luminaire is made of white powder-painted aluminum. Complete suspension system included (with central box) \*.

Available in 2 versions:

- OPAL - spreads the light evenly,
- POINT - with an innovative lens system providing a low UGR (beam angle: 30 UGR <10; 60 UGR <19), thereby reducing glare.

Available on request:

- dimensions: 1700mm, 2200mm, 3000mm, 4100mm, 5100mm, 6000mm,
- luminaire luminous flux: from 7 560 lm to 49 390 lm,
- colors: RAL 9016, RAL 1013, RAL 1036, RAL 30001, RAL 8029, RAL 8028, RAL 7024, RAL 9005,
- color temperature: 4000K,
- DALI.

\* for sizes 1135mm and 1500mm - 2 types of suspension system to choose (with central box or side box).

## APPLICATION

ANELLO LED is an extremely impressive suspended luminaire, dedicated to such interiors as lobby, reception desks, shopping malls, and showrooms. It also works well in flats, perfectly matching the elegant surroundings.

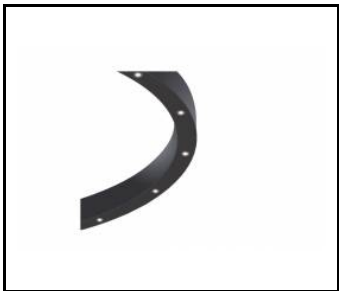
# ANELLO LED POINT 770MM 1650LM 830 30° MAT BLACK (10X2,4W)

DETAILED CARD

## TECHNICAL PARAMETERS TABLE

Nominal power [W]:	24	Optics:	lens
Light source:	LED module	Material of the body:	aluminium
Colour temperature [K]:	3000	Ingress protection:	IP20
Luminous flux [lm]:	1650	Mounting version:	suspended
Supply voltage [V]:	220-240	Working temperature [°C]:	od 0 do +40
Diffuser type:	lens	Net weight [kg]:	7.650
Frequency [Hz]:	50 - 60	CE certificate:	<a href="#">35/2020</a>
Beam angle [°]:	30	Index:	730276
Luminous efficacy [lm/W]:	69	Version:	POINT
Colour of the body:	black	UGR (4H8H):	<10
Energy efficiency class:	A	Warranty [years]:	2
Electrical protection class:	I	Category of application:	architectural, HoReCa, commercial facilities, educational institutions
Dimensions (H/W/T/S) [mm]:	770/85	Manual:	<a href="#">Download PDF</a>

## TECHNICAL DETAILS



anello led 3 detal

Card creation date: 08 December 2020  
The company reserves the right to make design changes or upgrades in the presented product. Product data sheet does not constitute an offer. \* Parameter tolerance is +/- 10%

 This product is a subject to electric and electronic waste equipment regulations (WEEE).

 Certificate CE - Nr: 35/2020



Lena Lighting S.A.  
ul. Kórnicka 52, 63-000 Środa Wielkopolska  
tel. +48 61 28 60 333 (Pn-Pt, 8-16), e-mail: [hello@lenalighting.pl](mailto:hello@lenalighting.pl), [www.lenalighting.pl](http://www.lenalighting.pl)