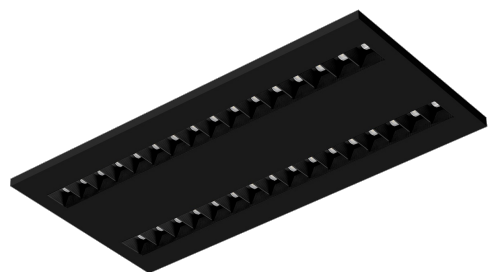


TERRA 2 LED N 595X300MM X2 1900LM 840 BLACK MAT STRUCTURE (20W)

DETAILED CARD



TECHNICAL PARAMETERS

Index:	237027
Ingress protection:	IP20
Nominal power [W]:	20
Luminous flux [lm]*:	1900
Colour rendering index:	>80
SDCM:	≤ 3
Material of the body:	powder coated steel
Mounting version:	surface
Dimensions (H/W/T/S) [mm]:	595/300/36
Warranty [years]:	5

CHARACTERISTICS

LED luminaire with high total luminous Flux. Made of powder-coated white steel sheet. The luminaire has a patented HE reflector installed, which ensures efficiency and effectively eliminates glare. Available mounting versions: surface mounted, surface mounted on neodymium magnets (magnet ver. / N-MAG), flush-mounted in modular or KG ceilings (using an adapter) or suspended. In the surface-mounted version, solutions influencing the speed and safety of installation were used. In addition, the versions with neodymium magnets shorten the installation time of surface-mounted versions to an absolute minimum.

APPLICATION

General purpose surface mounted luminaire for indoor application in offices or other utility rooms. Appropriate as the main light source even when the work requires eyesight concentration.

TERRA 2 LED N 595X300MM X2 1900LM 840 BLACK MAT STRUCTURE (20W)

DETAILED CARD

TECHNICAL PARAMETERS TABLE

Index:	237027	Colour of the body:	black mat
Light source:	LED module	Dimensions (H/W/T/S) [mm]:	595/300/36
Nominal power [W]:	20	Ingress protection:	IP20
Rated power of the luminaire [W]:	22.70	Mounting version:	surface
Supply voltage [V]:	220-240	Working temperature [°C]:	from -20 to +35
Frequency [Hz]:	50 - 60	Category type:	louvres
Luminous flux [lm]:	1900	Category of application:	commercial facilities, educational institutions
Luminous efficacy [lm/W]:	84	Version:	2x1
Energy efficiency class:	F	LED lifespan L70B50 [h]:	132000
Electrical protection class:	II	LED lifespan L80B20 [h]:	84000
Colour temperature [K]:	4000	LED lifespan L90B10 [h]:	42000
Colour rendering index:	>80	Photobiological safety:	Risk Group 1 (no photobiological hazard under normal behavioral limitation)
SDCM:	≤ 3	Warranty [years]:	5
Power factor:	0.95	CE certificate:	354/2023
Optics:	black HE	Manual:	Download PDF
Material of the body:	powder coated steel	Plik LDT:	Download

Card creation date: 03 March 2025

The company reserves the right to make design changes or upgrades in the presented product. Product data sheet does not constitute an offer. * Parameter tolerance is +/- 10%

 This product is a subject to electric and electronic waste equipment regulations (WEEE).

 Certificate CE - Nr: 354/2023



Lena Lighting S.A.
ul. Kórnicka 52, 63-000 Środa Wielkopolska
tel. +48 61 28 60 333 (Pn-Pt, 8-16), e-mail: hello@lenalighting.pl, www.lenalighting.pl