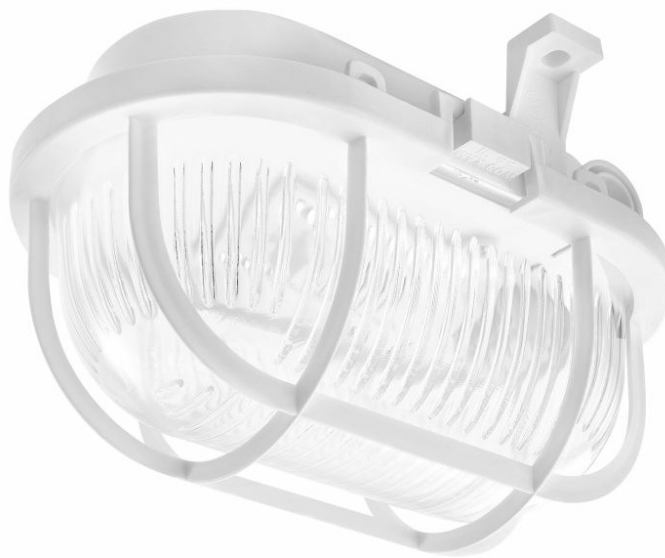


# OVAL LED EVO HV 170MM 540LM 830 S.TWORZYWO POPIEL KLOSZ SZKLANY (5W)

DETAILED CARD



## TECHNICAL PARAMETERS

<b>Index:</b>	911262
<b>Ingress protection:</b>	IP44
<b>Impact resistance:</b>	IK06
<b>Nominal power [W]:</b>	5
<b>Luminous flux [lm]*:</b>	540
<b>Colour temperature [K]:</b>	3000
<b>SDCM:</b>	≤ 4
<b>Energy efficiency class:</b>	F
<b>Material of the body:</b>	PP
<b>Diffuser material:</b>	glass

## CHARACTERISTICS

Surface mounted, LED luminaire, with an integrated energy-efficient LED GO! panel that provides high luminous efficacy and high ingress protection class of IP44 (wall assembly) and IP40 (ceiling assembly). The base is made of polypropylene and the diffuser is made of glass or polycarbonate. Characteristics: color temperature 3000K, 4000K; CRI> 80; durability of LED panels 50,000 hours (L70B50) ta = 25 ° C

## APPLICATION

Surface mounted luminaire with plastic or metal grid for mounting on ceilings and walls; intended for indoor use (rooms with high humidity, passageways and staircases, sewers and basements) as well as outdoor use (industrial facade lighting, parking lots).

# OVAL LED EVO HV 170MM 540LM 830 S.TWORZYWO POPIEL KLOSZ SZKLANY (5W)

DETAILED CARD

## TECHNICAL PARAMETERS TABLE

Light source:	LED module	Dimensions (H/W/T/S) [mm]:	170/125/110
Nominal power [W]:	5	Mounting dimensions [mm]:	110
Rated power of the luminaire [W]:	6.10	Impact resistance:	IK06
Supply voltage [V]:	220-240	Ingress protection:	IP44
Frequency [Hz]:	50 - 60	Mounting version:	surface
Luminous flux [lm]:	540	Working temperature [°C]:	from 0 to +25
Luminous efficacy [lm/W]:	89	Net weight [kg]:	0.390
Energy efficiency class:	F	CE certificate:	<a href="#">402/2023</a>
Electrical protection class:	I	Index:	911262
Colour temperature [K]:	3000	EAN:	5905963911262
Colour rendering index:	>80	Category type:	bulkheads
SDCM:	≤ 4	Category of application:	parkings and bicycle paths
Power factor:	0.99	Version:	plastic grid
LED lifespan L70B50 [h]:	80 000	Luminaire rated power $\Phi_{min}$ [W]:	6.10
Beam angle [°]:	120	ETIM class:	EC001058
Diffuser material:	glass	Photobiological safety:	Risk Group 1 (no photobiological hazard under normal behavioral limitation)
Diffuser type:	PRM	Warranty [years]:	3
Material of the body:	PP	Manual:	<a href="#">Download PDF</a>
Colour of the body:	gray		

Card creation date:14 February 2020

The company reserves the right to make design changes or upgrades in the presented product. Product data sheet does not constitute an offer. \* Parameter tolerance is +/- 10%

 This product is a subject to electric and electronic waste equipment regulations (WEEE).

 Certificate CE - Nr: 402/2023