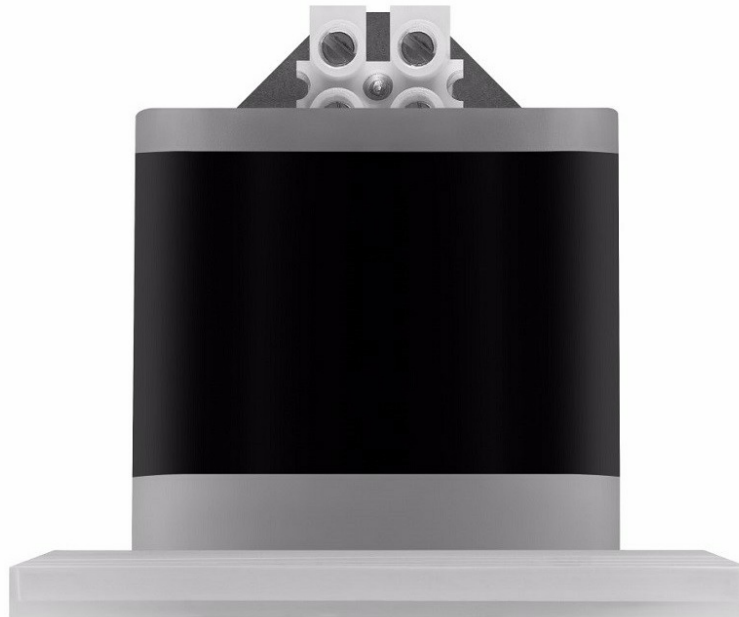


# UP LED AS 2W 4000K FOR MOUNTING IN AN ELECTRICAL BOX

DETAILED CARD



## TECHNICAL PARAMETERS

<b>Index:</b>	903021
<b>Ingress protection:</b>	IP20
<b>Impact resistance:</b>	IK07
<b>Nominal power [W]:</b>	2
<b>Luminous flux [lm]*:</b>	220
<b>Colour temperature [K]:</b>	4000
<b>Color rendering index (Ra) &gt;:</b>	80
<b>SDCM:</b>	3
<b>Energy efficiency class:</b>	E
<b>Material of the body:</b>	ABS

## CHARACTERISTICS

Energy-saving, outdoor 2W accent fitting provides economical and long-term operation without replacing light sources. Dustproof and waterproof luminaire with an ingress protection class of IP65, protected against dust and water splashing from a nozzle directed at any angle. Available with asymmetrical light distribution. Specification: color temperature of the LED light source: 3000K, 4000K.

## APPLICATION

Outdoor luminaire intended to illuminate facades, stairs, alcoves, pillars and greenery in gardens, parks and recreational facilities.

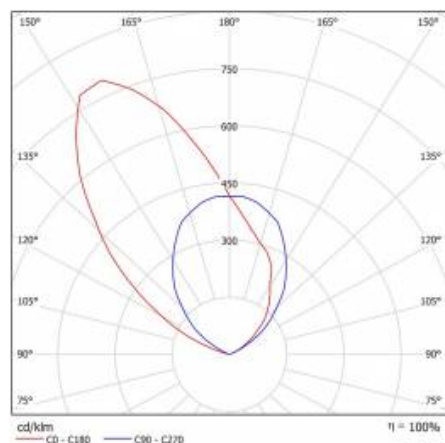
# UP LED AS 2W 4000K FOR MOUNTING IN AN ELECTRICAL BOX

DETAILED CARD

## TECHNICAL PARAMETERS TABLE

Light source:	LED module	Dimensions (H/W/T/S) [mm]:	70/70/50
Nominal power [W]:	2	Mounting dimensions [mm]:	70/70/50
Rated power of the luminaire [W]:	2	Impact resistance:	IK07
Supply voltage [V]:	220-240	Ingress protection:	IP20
Frequency [Hz]:	50 - 60	Mounting version:	electric box
Luminous flux [lm]:	220	Working temperature [°C]:	from -20 to +35
Luminous efficacy [lm/W]:	110	Net weight [kg]:	0.230
Energy efficiency class:	E	CE certificate:	<a href="#">187/2023</a>
Electrical protection class:	II	Warranty [years]:	2
Colour temperature [K]:	4000	Index:	903021
Color rendering index (Ra) >:	80	EAN:	5905963903021
SDCM:	3	Category type:	accent lighting
LED lifespan L70B50 [h]:	50000	ETIM class:	EC001744
Beam angle [°]:	60	Photobiological safety:	Risk Group 1 (no photobiological hazard under normal behavioral limitation)
Diffuser material:	PC	Manual:	<a href="#">Download PDF</a>
Diffuser type:	PRM	Plik LDT:	<a href="#">Download</a>
Material of the body:	ABS		

## LIGHT CURVES



Card creation date: 09 January 2025

The company reserves the right to make design changes or upgrades in the presented product. Product data sheet does not constitute an offer. \* Parameter tolerance is +/- 10%

 This product is a subject to electric and electronic waste equipment regulations (WEEE).

 Certificate CE - Nr: 187/2023



Lena Lighting S.A.  
ul. Kórnicka 52, 63-000 Środa Wielkopolska  
tel. +48 61 28 60 333 (Pn-Pt, 8-16), e-mail: [hello@lenalighting.pl](mailto:hello@lenalighting.pl), [www.lenalighting.pl](http://www.lenalighting.pl)