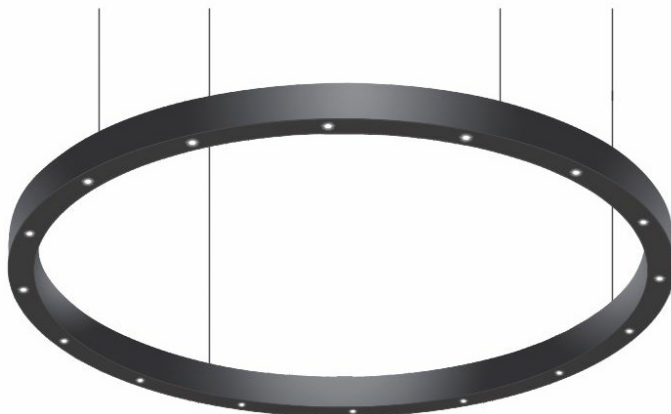


ANELLO LED POINT 770MM 1650LM 830 30° MAT WHITE (10X2,4W)

DETAILED CARD



TECHNICAL PARAMETERS

Index:	561801
Ingress protection:	IP20
Nominal power [W]:	24
Luminous flux [lm]*:	1650
Colour temperature [K]:	3000
Energy efficiency class:	A
Material of the body:	aluminium

CHARACTERISTICS

Suspended LED luminaire in the shape of a circle, allowing for an interesting arrangement of large representative interiors. The luminaire is made of white powder-painted aluminum. Complete suspension system included (with central box) *.

Available in 2 versions:

- OPAL - spreads the light evenly,
- POINT - with an innovative lens system providing a low UGR (beam angle: 30 UGR <10; 60 UGR <19), thereby reducing glare.

Available on request:

- dimensions: 1700mm, 2200mm, 3000mm, 4100mm, 5100mm, 6000mm,
- luminaire luminous flux: from 7 560 lm to 49 390 lm,
- colors: RAL 9016, RAL 1013, RAL 1036, RAL 30001, RAL 8029, RAL 8028, RAL 7024, RAL 9005,
- color temperature: 4000K,
- DALI.

* for sizes 1135mm and 1500mm - 2 types of suspension system to choose (with central box or side box).

APPLICATION

ANELLO LED is an extremely impressive suspended luminaire, dedicated to such interiors as lobby, reception desks, shopping malls, and showrooms. It also works well in flats, perfectly matching the elegant surroundings.

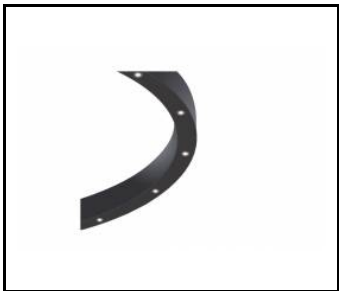
ANELLO LED POINT 770MM 1650LM 830 30° MAT WHITE (10X2,4W)

DETAILED CARD

TECHNICAL PARAMETERS TABLE

Nominal power [W]:	24	Ingress protection:	IP20
Light source:	LED module	Mounting version:	suspended
Colour temperature [K]:	3000	Working temperature [°C]:	od 0 do +40
Luminous flux [lm]:	1650	Net weight [kg]:	7.650
Supply voltage [V]:	220-240	CE certificate:	35/2020
Diffuser type:	lens	Index:	561801
Frequency [Hz]:	50 - 60	EAN:	5905963561801
Beam angle [°]:	30	Version:	POINT
Luminous efficacy [lm/W]:	69	DC voltage range [V]:	50 - 60
Colour of the body:	white	UGR (4H8H):	<10
Energy efficiency class:	A	Photobiological safety:	Risk Group 1 (no photobiological hazard under normal behavioral limitation)
Electrical protection class:	I	Warranty [years]:	2
Dimensions (H/W/T/S) [mm]:	770/85	Category of application:	architectural, HoReCa, commercial facilities, educational institutions
Optics:	lens	Warranty [years]:	2
Material of the body:	aluminium	Manual:	Download PDF

TECHNICAL DETAILS



anello led 3 detal

Card creation date: 08 December 2020

The company reserves the right to make design changes or upgrades in the presented product. Product data sheet does not constitute an offer. * Parameter tolerance is +/- 10%

 This product is a subject to electric and electronic waste equipment regulations (WEEE).

 Certificate CE - Nr: 35/2020



Lena Lighting S.A.
ul. Kórnicka 52, 63-000 Środa Wielkopolska
tel. +48 61 28 60 333 (Pn-Pt, 8-16), e-mail: hello@lenalighting.pl, www.lenalighting.pl