

TYTAN LED PRO 1150MM 4350LM 840 IP66 (24W) DALI

DETAILED CARD



TECHNICAL PARAMETERS

Index:	389290
Ingress protection:	IP66
Impact resistance:	IK09
Nominal power [W]:	24
Luminous flux [lm]*:	4350
Colour temperature [K]:	4000
Colour rendering index:	>80
SDCM:	≤ 3
Energy efficiency class:	B
Material of the body:	PC

CHARACTERISTICS

TYTAN LED PRO is a fitting from NEXT GEN line, which is a new generation of fittings in LED technology. The fitting, designed from scratch, allows new solutions improving the light distribution and temperature balance. Branded LED diodes and new LED modules have influence on a very high luminous efficacy: up to 178 lm/W. It guarantees the best required lighting level and energy saving. The solution based on integration of the diffuser and LED panel is applied in the fitting. The fitting has a lot of facilities making the mounting easier and faster: the system of diffuser suspension, adjustable mounting brackets ensuring the mounting tolerance +/-50mm. Standard equipment of the fitting: clips made of stainless steel (INOX). Motion sensor mounting height: up to 5 meters.

APPLICATION

The multifunctional LED lamp is designed for use in areas with high requirements for dust and water resistance. Especially recommended for lighting public facilities, including hospitals, educational facilities, halls, garages, passages, warehouses, shops, food industry, commercial and industrial facilities (factories, laboratories), warehouses, parking lots (underground and multi-level), sports stadiums, transport terminals and underground passages. The luminaire is ideal for new lighting applications as well as replacing traditional fluorescent luminaires with energy-saving LED solutions. Its design is adapted for surface and suspended mounting.

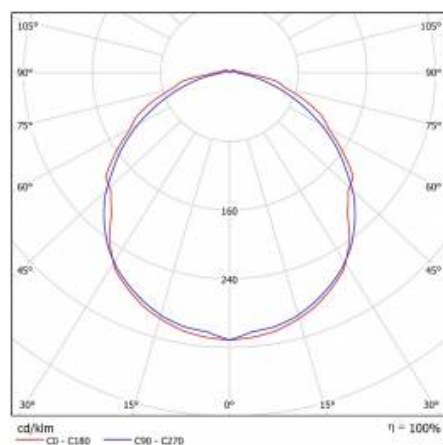
TYTAN LED PRO 1150MM 4350LM 840 IP66 (24W) DALI

DETAILED CARD

TECHNICAL PARAMETERS TABLE

Index:	389290	Optics material:	PC
EAN:	5905963389290	Material of the body:	PC
Light source:	LED module	Colour of the body:	grey
Nominal power [W]:	24	Dimensions (H/W/T/S) [mm]:	1152/85/80
Rated power of the luminaire [W]:	25.32	Impact resistance:	IK09
Frequency [Hz]:	50 - 60	Ingress protection:	IP66
Luminous flux [lm]:	4350	Mounting version:	surface, suspended
Luminous efficacy [lm/W]:	172	Working temperature [°C]:	from -20 to +40
Energy efficiency class:	B	DIMM DALI:	yes
Electrical protection class:	I	Warranty [years]:	5
Colour temperature [K]:	4000	Mark D:	yes
Colour rendering index:	>80	AC voltage range [V]:	220 - 240
SDCM:	≤ 3	Photobiological safety:	Risk Group 1 (no photobiological hazard under normal behavioral limitation)
Power factor:	0.95	ETIM class:	ECO00109
LED lifespan L70B50 [h]:	190000	Net weight [kg]:	1.490
LED lifespan L80B20 [h]:	120000	Warranty [years]:	5
LED lifespan L90B10 [h]:	57000	CE certificate:	79/2023
Exchangeable source:	yes	PZH certificate:	B-BK-60212-0152/20
Diffuser material:	PC	HACCP:	852/2004
Diffuser type:	MAT	Manual:	Download PDF
Diffuser colour:	white	ENEC Certificate:	0310/ENEC/23

LIGHT CURVES



TYTAN LED PRO 1150MM 4350LM 840 IP66 (24W) DALI

DETAILED CARD

TECHNICAL DETAILS



regulowane uchwyty / adjustable handles / einstellbare Halterungen



system zwieszania klosza / suspension system of the diffuser / hängende Diffusor



wybór miejsca zasilania / choosing a place of power supply / Stromversorgungsanschluss von mehreren Seite möglich

TYTAN LED PRO 1150MM 4350LM 840 IP66 (24W) DALI

DETAILED CARD

ACCESSORIES AVAILABLE

index	Name
907913	TYTAN LED. ATLAS LED - protective grid 1152mm
907920	TYTAN LED. ATLAS LED - protective grid 1432mm
16000507	Breathable gland gray M20*1.5 IP68
358937	TYTAN MULTI LED 1150mm 2500-4300lm 840 - lighting module
358944	TYTAN MULTI LED 1150mm 5000-8700lm 840 - lighting module
358951	TYTAN MULTI LED 1450mm 3150-5450lm 840 - lighting module
60000006	M16 stuffing box plug various PA black M-16 - BPM-21
908231	TYTAN LED - holder
80000279	Gland. beam, Codar, soft polyvinyl chloride (PVC-P), gray



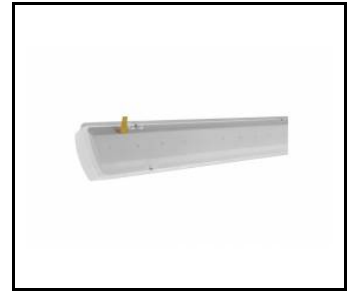
TYTAN LED. ATLAS LED - protective grid 1152mm (907913)



TYTAN LED. ATLAS LED - protective grid 1432mm (907920)



Breathable gland gray M20*1.5 IP68 (16000507)



TYTAN MULTI LED 1150mm 2500-4300lm 840 - lighting module (358937)



TYTAN MULTI LED 1150mm 5000-8700lm 840 - lighting module (358944)



TYTAN MULTI LED 1450mm 3150-5450lm 840 - lighting module (358951)



M16 stuffing box plug various PA black M-16 - BPM-21 (60000006)

Card creation date: 13 March 2024

The company reserves the right to make design changes or upgrades in the presented product. Product data sheet does not constitute an offer. * Parameter tolerance is +/- 10%

 This product is a subject to electric and electronic waste equipment regulations (WEEE).

 Certificate CE - Nr: 79/2023