

ATLAS LED 1450MM 5900LM 840 IP65 MAT 47W

DETAILED CARD



TECHNICAL PARAMETERS

Index:	952050
Ingress protection:	IP65
Impact resistance:	IK09
Nominal power [W]:	47
Luminous flux [lm]*:	5900
Colour temperature [K]:	4000
Colour rendering index:	>80
SDCM:	≤ 5
Energy efficiency class:	E
Material of the body:	PC

CHARACTERISTICS

ATLAS LED is a fitting with very high IP65 tightness and IK09 mechanical resistance. The solution based on integration of the diffuser and LED module is applied in the fitting. The fitting has a lot of facilities making the mounting easier and faster: the system of diffuser suspension, adjustable mounting brackets ensuring the mounting tolerance +/-50mm. Standard equipment of the fitting: clips made of stainless steel (INOX).

APPLICATION

A multipurpose LED fitting intended for using in the areas where high dust and moisture resistance is required. Highly recommended to be used in industrial buildings, warehouses, car parks (underground and multilevel), sports stadiums, transport terminals and underground passageways. Its construction is intended both for surface and suspended mounting. Adjustable mounting brackets (the mounting tolerance +/-40mm). Suspended diffuser integrated with LED modules. The luminaire is intended for general areas inside buildings – store rooms and storage rack areas as well as cold stores included in tables 5.4 and 5.5 of the EN12464 standard; for indoor traffic zones included in table 5.1 of the EN12464 standard and for parking areas and as lighting of railway installations included in table 5.34 and 5.53 of the EN12464 standard, excluding ticket and luggage offices, counters, waiting rooms, entrance halls and lounges.

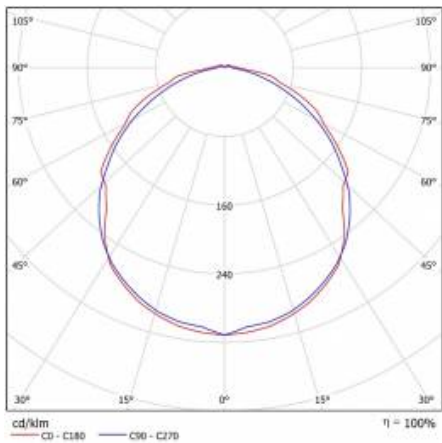
ATLAS LED 1450MM 5900LM 840 IP65 MAT 47W

DETAILED CARD

TECHNICAL PARAMETERS TABLE

Nominal power [W]:	47	Material of the body:	PC
Light source:	LED module	Colour of the body:	grey
Colour temperature [K]:	4000	Mounting dimensions [mm]:	960
Luminous flux [lm]:	5900	Impact resistance:	IK09
Rated power of the luminaire [W]:	53.80	Ingress protection:	IP65
Diffuser type:	MAT	Mounting version:	surface, suspended
Supply voltage [V]:	220-240	Working temperature [°C]:	from -20 to +35
Dimensions (H/W/T/S) [mm]:	1432/85/80	Net weight [kg]:	1.430
Frequency [Hz]:	50 - 60	Mark D:	yes
Energy efficiency class:	E	Index:	952050
Luminous efficacy [lm/W]:	110	Category type:	battens
Electrical protection class:	I	Photobiological safety:	Risk Group 1 (no photobiological hazard under normal behavioral limitation)
Colour rendering index:	>80	LED lifespan L70B50 [h]:	135000
SDCM:	≤ 5	Warranty [years]:	3
Power factor:	0.99	Warranty [years]:	5
Exchangeable source:	yes	Manual:	Download PDF
Surge protection [kV]:	2	CE certificate:	83/2019
Diffuser material:	PC	HACCP:	852/2004

LIGHT CURVES



ATLAS LED 1450MM 5900LM 840 IP65 MAT 47W

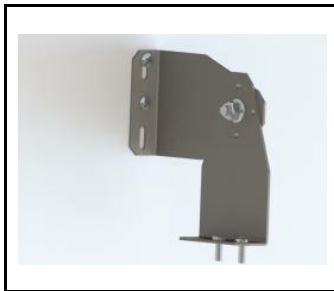
DETAILED CARD

ACCESSORIES AVAILABLE

index	Name
908200	TYTAN LED. ATLAS LED. INDUSTRY LED - adjustable handle (set of 2)
907913	TYTAN LED. ATLAS LED - protective grid 1152mm
907920	TYTAN LED. ATLAS LED - protective grid 1432mm
952029	ATLAS LED 1150mm 4500lm 840 - lighting module
952036	ATLAS LED 1450mm 6000lm 840 - lighting module
952074	ATLAS LED 1450mm 5900lm 840 MAT - lighting module
952067	ATLAS LED 1150mm 4400lm 840 MAT - lighting module
16000507	Breathable gland gray M20*1.5 IP68
60000006	M16 stuffing box plug various PA black M-16 - BPM-21
80000378	Cable gland PG 13.5 Titanium PA 6.6 gray with nut
657412	ATLAS LED 1150mm 5620lm 840 MAT - light module
657375	ATLAS LED 1150mm 5850lm 840 - light module
657429	ATLAS LED 1450mm 7020lm 840 MAT - light module
657382	ATLAS LED 1450mm 7320lm 840 - light module

ATLAS LED 1450MM 5900LM 840 IP65 MAT 47W

DETAILED CARD



TYTAN LED. ATLAS LED. INDUSTRY LED - adjustable handle (set of 2) (908200)



TYTAN LED. ATLAS LED - protective grid 1152mm (907913)



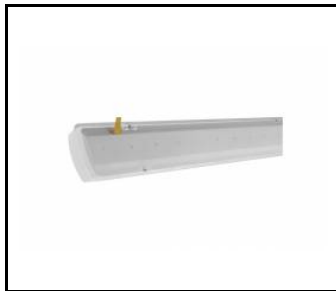
TYTAN LED. ATLAS LED - protective grid 1432mm (907920)



ATLAS LED 1150mm 4500lm 840 - lighting module (952029)



ATLAS LED 1450mm 6000lm 840 - lighting module (952036)



ATLAS LED 1450mm 5900lm 840 MAT - lighting module (952074)



ATLAS LED 1150mm 4400lm 840 MAT - lighting module (952067)



Breathable gland gray M20*1.5 IP68 (16000507)



M16 stuffing box plug various PA black M-16 - BPM-21 (60000006)



ATLAS LED 1150mm 5620lm 840 MAT - light module (657412)



ATLAS LED 1150mm 5850lm 840 - light module (657375)



ATLAS LED 1450mm 7020lm 840 MAT - light module (657429)



ATLAS LED 1450mm 7320lm 840 - light module (657382)

Card creation date: 19 August 2021

The company reserves the right to make design changes or upgrades in the presented product. Product data sheet does not constitute an offer. * Parameter tolerance is +/- 10%



This product is a subject to electric and electronic waste equipment regulations (WEEE).



Certificate CE - Nr: 83/2019



Lena Lighting S.A.
ul. Kórnicka 52, 63-000 Środa Wielkopolska
tel. +48 61 28 60 333 (Pn-Pt, 8-16), e-mail: hello@lenalighting.pl, www.lenalighting.pl