

MAGNUM MULTIBATTERY L 9250LM 840 III CL. (73W) - AMPSHARE / HILTI

DETAILED CARD



TECHNICAL PARAMETERS

Ingress protection:	IP20
Impact resistance:	IK10
Rated power of the luminaire [W]*:	73
Colour temperature [K]:	4000
Luminous flux [lm]*:	9250
Supply voltage [V]:	18 / 22
Energy efficiency class:	D
Electrical protection class:	III
Material of the body:	PP
Colour of the body:	grey

CHARACTERISTICS

Compact LED floodlight for professional use. Provides even and stable directional lighting. Made of impact resistant polypropylene (PP). Anti-glare polycarbonate (PC) diffuser transmits up to 80% of the light emitted by the LED. Smaller size and compact design makes it more convenient to transport. Equipped with an on/off switch with 4-step luminous flux adjustment. It can be mounted on the Future Stand, significantly increasing the range and comfort of use. The lamp is compatible with 18V batteries of such manufacturers as: Bosch (18V Professional), Makita, Milwaukee, DeWalt, Berner. The device has a low battery indication.

Operating modes for battery operation:

for 2Ah Battery:

- 1000 lm - working time: 5h
- 3800 lm - working time: 1h 15min
- 5650 lm - working time: 45min
- 9250 lm - working time: 25min

for 5Ah Battery:

- 1000 lm - working time: 12h
- 3800 lm - working time: 3h 20min
- 5650 lm - working time: 2h
- 9250 lm - working time: 1h 10min

APPLICATION

It can be used as a workplace luminaire to illuminate workplaces, workshops or garages.

MAGNUM MULTIBATTERY L 9250LM 840 III CL. (73W) - AMPSHARE / HILTI

DETAILED CARD

TECHNICAL PARAMETERS TABLE

Index:	609978	Dimensions (H/W/T/S) [mm]:	300/478/84
Light source:	LED module	Impact resistance:	IK10
Rated power of the luminaire [W]:	73	Ingress protection:	IP20
Colour temperature [K]:	4000	Net weight [kg]:	2.050
Luminous flux [lm]:	9250	Warranty [years]:	5
Supply voltage [V]:	18 / 22	Category type:	workplace floodlights
Luminous efficacy [lm/W]:	117	LED lifespan L70B50 [h]:	140000
Energy efficiency class:	D	LED lifespan L80B20 [h]:	85000
Electrical protection class:	III	LED lifespan L90B10 [h]:	42000
Colour rendering index:	>80	Light distribution type:	lambertian
SDCM:	≤ 3	ETIM class:	EC000346
Beam angle [°]:	120	Photobiological safety:	Risk Group 1 (no photobiological hazard under normal behavioral limitation)
Diffuser material:	PC	Warranty [years]:	5
Diffuser colour:	transparent	CE certificate:	118/2023
Optics material:	PC	Manual:	Download PDF
Material of the body:	PP	Additional accessories:	Adapter for the Hilti
Colour of the body:	grey		

MAGNUM MULTIBATTERY L 9250LM 840 III CL. (73W) - AMPSHARE / HILTI

DETAILED CARD

ACCESSORIES AVAILABLE

index	Name
608803	Adapter for Magnum Battery BOSCH / MIL - DEW (NEW)
608810	Adapter for Magnum Battery BOSCH / MAKITA (NEW)
608827	Adapter for Magnum Battery BOSCH / FESTOOL (NEW)
608841	Adapter for Magnum Battery BOSCH / METABO (NEW)
608858	Adapter for Magnum Battery BOSCH / Hikoki 18V (NEW)
608834	Adapter for Magnum Battery BOSCH / Hilti 22V (NEW)



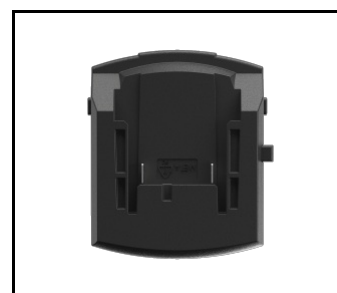
Adapter for Magnum Battery BOSCH /
MIL - DEW (NEW) (608803)



Adapter for Magnum Battery BOSCH /
MAKITA (NEW) (608810)



Adapter for Magnum Battery BOSCH /
FESTOOL (NEW) (608827)



Adapter for Magnum Battery BOSCH /
METABO (NEW) (608841)



Adapter for Magnum Battery BOSCH /
Hikoki 18V (NEW) (608858)

Card creation date: 23 January 2024

The company reserves the right to make design changes or upgrades in the presented product. Product data sheet does not constitute an offer. * Parameter tolerance is +/- 10%

 This product is a subject to electric and electronic waste equipment regulations (WEEE).

 Certificate CE - Nr: 118/2023