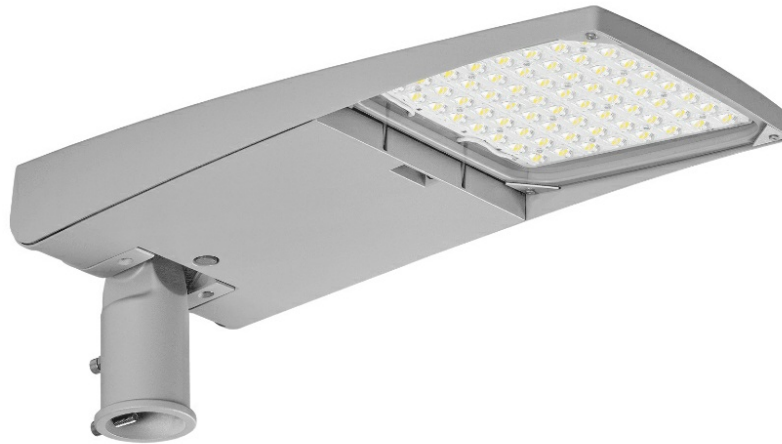


TIARA 2 LED M 2100LM 740 RM7 IP66 II CL. DALI (14W)

DETAILED CARD



TECHNICAL PARAMETERS

Index:	915499
Ingress protection:	IP66
Impact resistance:	IK09
Rated power of the luminaire [W]*:	14
Luminous flux [lm]*:	2100
Colour temperature [K]:	4000
Colour rendering index:	> 70
Electrical protection class:	II
Optics:	RM7
Control:	Yes + 5-stage power reduction

CHARACTERISTICS

TIARA 2 LED a new generation of LED road luminaires. It uses directional multi-lens arrays made of PMMA, with each lens having the same optics, ensuring that the light characteristics remain constant over time. The luminaire's dual-chamber design maintains the integrity of the optical chamber during installation work and the opening of the electrical chamber. As standard, the luminaire offers tool-free access to the electrical fixtures using two independent clips, which, if desired and needed to protect against vandalism or uncontrolled opening, can optionally be permanently secured with screws or a seal. The upper part of the luminaire, has dedicated hinges and a safety cable to prevent falling. Using standard tools, quick and convenient service is possible, allowing replacement of any component without the need to disassemble the entire fixture and make soldered connections. The body and handle made of die-cast aluminum, powder-coated in gray, is characterized by a very high degree of IP66 and IK09 impact resistance. Standard features: ergonomic light module suspension system; NTC luminaire accidental overheating protection; fully programmable DALI driver; available functions for maintaining constant lumen output during CLO and autonomous 5-stage power reduction; filter to prevent condensation; connection terminals; tool-free access. Additional options: NEMA, ZHAGA connectors; interfacing with control systems, RCR motion sensor; anti-vandal protection with screws/seal; additional SP10kV protection outside the power supply, on/off power supply without power reduction function; knife disconnect switch that disconnects voltage if the electrical compartment is opened; design with cable terminated with quick disconnect; painting in any RAL color. Certifications: CE, RoHS, ENEC, ENEC+, Zhaga D4i.

APPLICATION

Thanks to the use of dedicated optics, it is possible to illuminate objects such as: highways, expressways, national, provincial, county, municipal, city, neighborhood, area lighting. Optics are also available to illuminate: pedestrian crossings, sidewalks and bicycle paths.

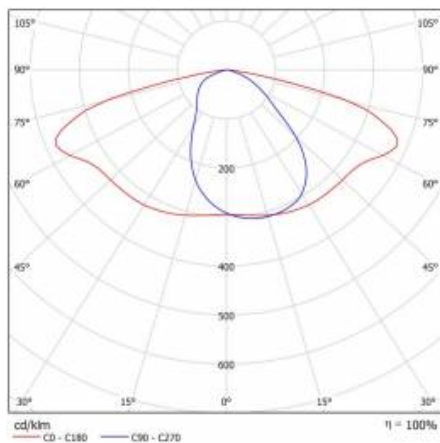
TIARA 2 LED M 2100LM 740 RM7 IP66 II CL. DALI (14W)

DETAILED CARD

TECHNICAL PARAMETERS TABLE

Index:	915499	Exchangeable source:	yes
EAN:	5905963915499	Material of the body:	powder coated aluminium
ETIM class:	EC000062	Colour of the body:	grey
Category type:	street lighting	Dimensions (H/W/T/S) [mm]:	597/265/105
Version:	M	Mounting dimensions [mm]:	ø60
Light source:	LED module	Impact resistance:	IK09
Rated power of the luminaire [W]:	14	Ingress protection:	IP66
Supply voltage [V]:	220 - 240	Mounting version:	Top, on pole / Side, on boom
Frequency [Hz]:	50 - 60	Beam angle adjustment [°]:	-30° to +120° (peak); -120° to +30° (side)
Luminous flux [lm]:	2100	Lateral surface (SCx) [m2]:	0.028
Luminous efficacy [lm/W]:	150	Working temperature [°C]:	from -40 to +50
Energy efficiency class:	C	LED lifespan L90B10 [h]:	100000
Electrical protection class:	II	DIMM DALI:	yes
Colour temperature [K]:	4000	Control:	Yes + 5-stage power reduction
Colour rendering index:	> 70	Protection type:	NTC
SDCM:	≤ 5	Vandalproof:	yes
Power factor:	0.93	Net weight of the luminaire [kg]:	5.200
Surge protection [kV]:	10	Warranty [years]:	10
Diffuser material:	toughened glass	ULOR:	0%
Diffuser type:	transparent	ENEC Certificate:	0228/ENEC/20/M2/A1 , 0065/ENEC+/21/M1
Optics material:	PMMA	CE certificate:	90/2023
Optics:	RM7	Manual:	Download PDF

LIGHT CURVES



TIARA 2 LED M 2100LM 740 RM7 IP66 II CL. DALI (14W)

DETAILED CARD

ACCESSORIES AVAILABLE

index	Name
314049	wall holder (galvanized)
314056	wall holder (grey)
UL01350	Handle fi 76mm for Tiara 2 LED M and Tiara 2 LED S



wall holder (galvanized) (314049)



wall holder (grey) (314056)

Card creation date: 02 October 2023

The company reserves the right to make design changes or upgrades in the presented product. Product data sheet does not constitute an offer. * Parameter tolerance is +/- 10%



This product is a subject to electric and electronic waste equipment regulations (WEEE).



Certificate CE - Nr: 90/2023