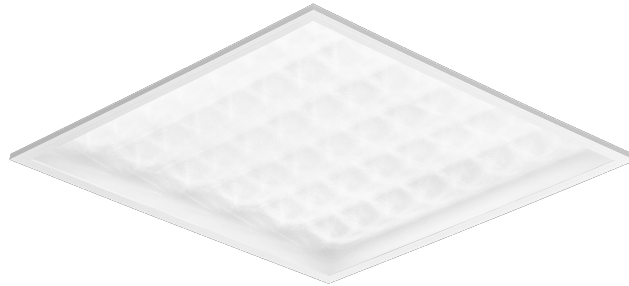


# CONTRA LED 595X595MM 4500LM 840 IP40/IP20 II CL. PRM PS 31W DALI

DETAILED CARD



## TECHNICAL PARAMETERS

<b>Index:</b>	374586
<b>Ingress protection:</b>	IP40/IP20
<b>Impact resistance:</b>	IK06
<b>Rated power of the luminaire [W]*:</b>	31
<b>Luminous flux [lm]*:</b>	4500
<b>Colour temperature [K]:</b>	4000
<b>Colour rendering index:</b>	>80
<b>Energy efficiency class:</b>	C
<b>Electrical protection class:</b>	II
<b>Material of the body:</b>	coated aluminium

## CHARACTERISTICS

Contra LED versatile LED panel characterised by its low, slim profile and elegant design. Adapted for flush-mounted installation in modular ceilings, surface-mounted or suspended using an additional frame (available as an accessory). Luminaire with integrated energy-saving LED module, made of white painted aluminium profile, equipped with structured multi-layer PS MAT or PRM shade for perfect light diffusion.

## APPLICATION

The luminaire is intended for indoor use in office (offices, conference rooms) or representative use (hotels, restaurants); illumination of public facilities, including hospitals, educational facilities, offices, halls, garages, passageways, warehouses, shops, as well as in the food industry and food-related retail and service facilities. The unique design and excellent light performance enable CONTRA LED to be used as the main source of light, also for work that requires visual focus. The lamp is suitable for both new applications and the replacement of traditional T8 and T5 luminaires with energy-efficient LED solutions.

# CONTRA LED 595X595MM 4500LM 840 IP40/IP20 II CL. PRM PS 31W DALI

DETAILED CARD

## TECHNICAL PARAMETERS TABLE

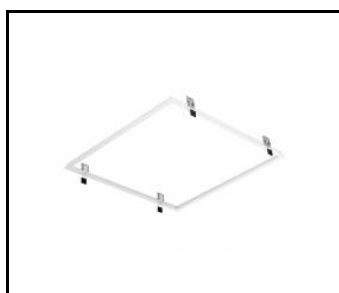
Index:	374586	Material of the body:	coated aluminium
EAN:	5905963374586	Colour of the body:	white
Light source:	LED	Dimensions (H/W/T/S) [mm]:	595/595/30
Rated power of the luminaire [W]:	31	Impact resistance:	IK06
Supply voltage [V]:	220-240	Ingress protection:	IP40/IP20
Frequency [Hz]:	50-60	Mounting version:	recessed, surface, suspended
Luminous flux [lm]:	4500	Working temperature [°C]:	from 0 to +35
Luminous efficacy [lm/W]:	146	UGR (4H8H):	<19
Energy efficiency class:	C	DIMM DALI:	yes
Electrical protection class:	II	Net weight [kg]:	1.600
Colour temperature [K]:	4000	Category type:	louvres
Colour rendering index:	>80	LED lifespan L70B50 [h]:	228000
Beam angle [°]:	115	LED lifespan L80B20 [h]:	143000
Surge protection [kV]:	2	LED lifespan L90B10 [h]:	68000
Diffuser material:	PS	Additional accessories:	surface frame. pendant system
Diffuser type:	PRM	Warranty [years]:	5
Diffuser colour:	transparent	CE certificate:	<a href="#">80/2023</a>
Optics material:	PMMA	Manual:	<a href="#">Download PDF</a>
Optics:	lens		

# CONTRA LED 595X595MM 4500LM 840 IP40/IP20 II CL. PRM PS 31W DALI

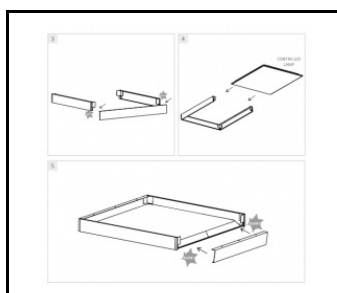
DETAILED CARD

## ACCESSORIES AVAILABLE

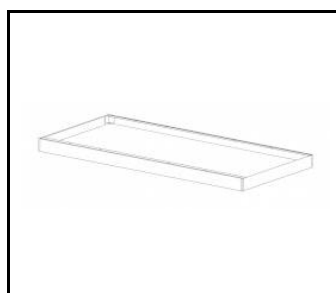
index	Name
999543	Plasterboard recessing kit 630x630 white
374715	CONTRA LED surface-mounted frame CLICK 600x600x65mm
374708	CONTRA LED surface-mounted frame CLICK 1200x300x65mm
374692	CONTRA LED suspension system 1200x300
374685	CONTRA LED suspension system 600x600
374838	CONTRA LED MOUNTING CLIPS IN KG (4PCS)
374845	Frame adapter KG 635x635 WHITE
374852	Frame adapter KG 1235x335 WHITE
998966	Frame steel white structure RAL9016 600x600 SM "well effect"
998973	Frame steel white gloss RAL9016 600x600 SM "well effect"



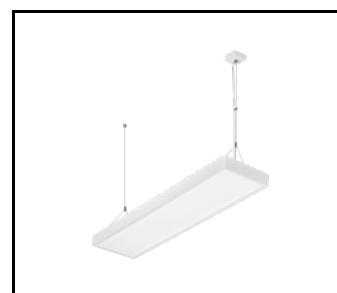
Plasterboard recessing kit 630x630 white (999543)



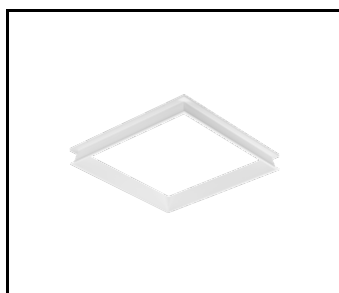
CONTRA LED surface-mounted frame CLICK 600x600x65mm (374715)



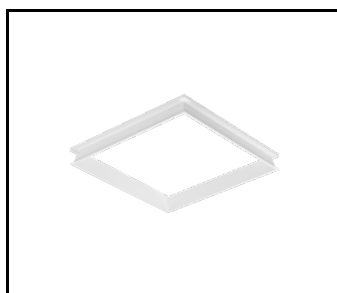
CONTRA LED surface-mounted frame CLICK 1200x300x65mm (374708)



CONTRA LED suspension system 1200x300 (374692)



Frame steel white structure RAL9016 600x600 SM "well effect" (998966)



Frame steel white gloss RAL9016 600x600 SM "well effect" (998973)

Card creation date: 12 July 2024

The company reserves the right to make design changes or upgrades in the presented product. Product data sheet does not constitute an offer. \* Parameter tolerance is +/- 10%



This product is a subject to electric and electronic waste equipment regulations (WEEE).



Certificate CE - Nr: 80/2023