

TYTAN LED HALL

GENERAL CARD



TECHNICAL PARAMETERS

Ingress protection:	IP66
Impact resistance:	IK09
Nominal power [W]:	56.00; 70.00
Luminous flux [lm]*:	7350 - 9800
Colour temperature [K]:	3000; 4000
Colour rendering index:	>80
SDCM:	≤ 3
Material of the body:	PC
Diffuser material:	PC
Diffuser type:	transparent
Optics:	lens
Mounting version:	surface, suspended
Dimensions (H/W/T/S) [mm]:	1152/85/80; 1432/85/80;
Warranty [years]:	5

CHARACTERISTICS

TYTAN LED is a fitting from NEXT GEN line, which is a new generation of fittings in LED technology. The fitting, designed from scratch, allows new solutions improving the light distribution and temperature balance. Branded LED diodes and new LED modules have influence on a very high luminous efficacy: 150 lm/W. It guarantees the best required lighting level and energy saving up to 68%. The solution based on integration of the diffuser and LED module is applied in the fitting. The fitting has a lot of facilities making the mounting easier and faster: the system of diffuser suspension, adjustable mounting brackets ensuring the mounting tolerance +/- 40mm. Standard equipment of the fitting: clips made of stainless steel (INOX). Electrical protection class II available on request. Motion sensor mounting height: up to 5 meters.

TYTAN LED series has won the first prize in technical and commercial area lighting category during the 25th International Fair of Lighting Equipment LIGHT 2017 in Warsaw.

APPLICATION

The multifunctional LED lamp is designed for use in areas with high requirements for dust and water resistance. Especially recommended for lighting public facilities, including hospitals, educational facilities, halls, garages, passages, warehouses, shops, food industry, commercial and industrial facilities (factories, laboratories), warehouses, parking lots (underground and multi-level), sports stadiums, transport terminals and underground passages. The luminaire is ideal for new lighting applications as well as replacing traditional fluorescent luminaires with energy-saving LED solutions. Its design is adapted for surface and suspended mounting.

TYTAN LED HALL

GENERAL CARD

AVAILABLE VERSIONS



Click index >>, to see details

TYTAN LED HALL 56W

Nominal power [W]	Colour temperature [K]	Luminous flux [lm]*	DIMM DALI	Through wiring	Version	Dimensions (H/W/T/S) [mm]	Index
56	3000	7350				1152/85/80	>> 906909
56	3000	7350	yes			1152/85/80	>> 906978
56	4000	7800				1152/85/80	>> 906992
56	4000	7800	yes			1152/85/80	>> 907067
56	3000	7350		LS2		1152/85/80	>> 906916
56	4000	7800		LS2		1152/85/80	>> 907005

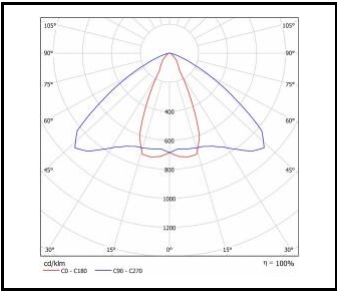
TYTAN LED HALL 70W

Nominal power [W]	Colour temperature [K]	Luminous flux [lm]*	DIMM DALI	Through wiring	Version	Dimensions (H/W/T/S) [mm]	Index
70	3000	9200				1432/85/80	>> 907081
70	3000	9200	yes			1432/85/80	>> 907159
70	4000	9800				1432/85/80	>> 907173
70	4000	9800	yes			1432/85/80	>> 907241
70	3000	9200		LS2		1432/85/80	>> 907098
70	4000	9800		LS2		1432/85/80	>> 907180
70	4000	9800		LS2	RAPID-A	1432/85/80	>> 907203
70	4000	9800		LS2	RAPID-D	1432/85/80	>> 907227

TYTAN LED HALL

GENERAL CARD

LUMINOUS INTENSITY DISTRIB. CURVE



tytan hall 10092018

TYTAN LED HALL

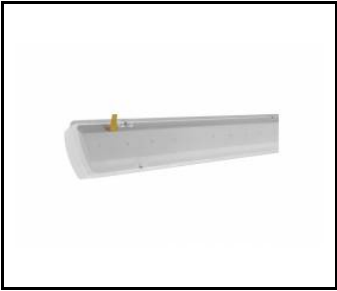
GENERAL CARD

ACCESSORIES AVAILABLE

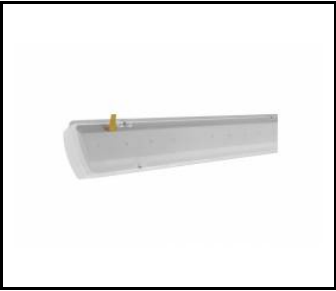
index	Name
907708	TYTAN LED HALL 1150mm 7350lm 830 - lighting module
907715	TYTAN LED HALL 1150mm 7800lm 840 - lighting module
907739	TYTAN LED HALL 1450mm 9200lm 830 - lighting module
907746	TYTAN LED HALL 1450mm 9800lm 840 - lighting module
908200	TYTAN LED. ATLAS LED. INDUSTRY LED - adjustable handle (set of 2)
907913	TYTAN LED. ATLAS LED - protective grid 1152mm
907920	TYTAN LED. ATLAS LED - protective grid 1432mm
16000507	Breathable gland gray M20*1.5 IP68
60000006	M16 stuffing box plug various PA black M-16 - BPM-21
80000378	Cable gland PG 13.5 Titanium PA 6.6 gray with nut
908231	TYTAN LED - holder
80000279	Gland. beam, Codar, soft polyvinyl chloride (PVC-P), gray

TYTAN LED HALL

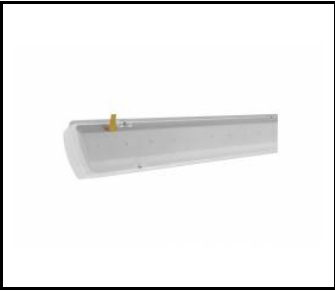
GENERAL CARD



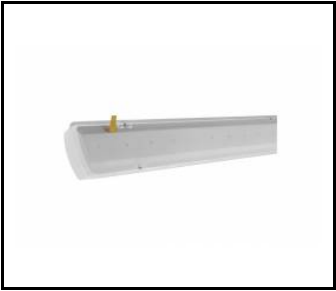
TYTAN LED HALL 1150mm 7350lm 830
- lighting module (907708)



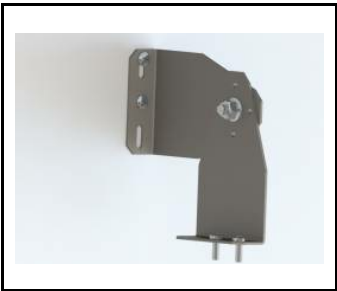
TYTAN LED HALL 1150mm 7800lm 840
- lighting module (907715)



TYTAN LED HALL 1450mm 9200lm
830 - lighting module (907739)



TYTAN LED HALL 1450mm 9800lm
840 - lighting module (907746)



TYTAN LED. ATLAS LED. INDUSTRY
LED - adjustable handle (set of
2) (908200)



TYTAN LED. ATLAS LED - protective
grid 1152mm (907913)



TYTAN LED. ATLAS LED - protective
grid 1432mm (907920)



Breathable gland gray M20*1.5
IP68 (16000507)



M16 stuffing box plug various PA black
M-16 - BPM-21 (60000006)

Card creation date: 30 September 2021

The company reserves the right to make design changes or upgrades in the presented product. Product data sheet does not constitute an offer. * Parameter tolerance is +/- 10%

 This product is a subject to electric and electronic waste equipment regulations (WEEE).

 Certificate CE - Nr: 197/2020