

TYTAN LED CHEMO

GENERAL CARD



TECHNICAL PARAMETERS

Ingress protection:	IP66
Impact resistance:	IK09
Nominal power [W]:	29.00 - 70.00
Luminous flux [lm]*:	4500 - 10900
Colour temperature [K]:	4000
Colour rendering index:	>80
SDCM:	≤ 3
Material of the body:	ABS
Colour of the body:	RAL 7040
Diffuser material:	PCT-G
LED lifespan L70B50 [h]:	116000
Warranty [years]:	2 / 0.5 (battery); 5

CHARACTERISTICS

TYTAN LED is a fitting from NEXT GEN line, which is a new generation of fittings in LED technology. The fitting, designed from scratch, allows new solutions improving the light distribution and temperature balance. Branded LED diodes and new LED modules have influence on a very high luminous efficacy: 150 lm/W. It guarantees the best required lighting level and energy saving up to 68%. The solution based on integration of the diffuser and LED module is applied in the fitting. The fitting has a lot of facilities making the mounting easier and faster: the system of diffuser suspension, adjustable mounting brackets ensuring the mounting tolerance +/- 40mm. Standard equipment of the fitting: clips made of stainless steel (INOX). Motion sensor mounting height: up to 5 meters.

The body is made of ABS and diffuser of the luminaire is made of copolyester (PCT-G), characterised by higher resistance to chemicals like, for example, ammonia and chemical disinfectants. As a result, it can be used in a tough chemical environment without any cracks, misting or scratches.

The material of the diffuser is GREENGUARD certified, thus ensuring that the luminaires for indoor use meet strict chemical emission limits, and contributing to healthier indoor environments.

APPLICATION

The multifunction LED lighting fixture is designed for use in areas with high requirements regarding dust tightness and water tightness. Especially recommended for:

- buildings where breeding animals are kept;
- medical rooms where chemical disinfectants are used.

TYTAN LED CHEMO

GENERAL CARD

AVAILABLE VERSIONS



Click index >>, to see details

TYTAN LED CHEMO 29W

Nominal power [W]	Colour temperature [K]	Luminous flux [lm]*	Diffuser type	Motion sensor	Through wiring	Emergency lighting [h]	Dimensions (H/W/T/S) [mm]	Index
29	4000	4500	MAT			3	1152/85/80	>> 358333
29	4000	4500	MAT				1152/85/80	>> 358302
29	4000	4500	MAT	yes			1152/85/80	>> 358326
29	4000	4500	MAT		LS2		1152/85/80	>> 358319

TYTAN LED CHEMO 35W

Nominal power [W]	Colour temperature [K]	Luminous flux [lm]*	Diffuser type	Motion sensor	Through wiring	Emergency lighting [h]	Dimensions (H/W/T/S) [mm]	Index
35	4000	5500	MAT				1432/85/80	>> 358722

TYTAN LED CHEMO 46W

Nominal power [W]	Colour temperature [K]	Luminous flux [lm]*	Diffuser type	Motion sensor	Through wiring	Emergency lighting [h]	Dimensions (H/W/T/S) [mm]	Index
46	4000	7400	MAT			3	1152/85/80	>> 358371
46	4000	7400	MAT				1152/85/80	>> 358340
46	4000	7400	MAT	yes			1152/85/80	>> 358364
46	4000	7400	MAT		LS2		1152/85/80	>> 358357

TYTAN LED CHEMO 70W

Nominal power [W]	Colour temperature [K]	Luminous flux [lm]*	Diffuser type	Motion sensor	Through wiring	Emergency lighting [h]	Dimensions (H/W/T/S) [mm]	Index
70	4000	10900	MAT				1432/85/80	>> 358739

TYTAN LED CHEMO

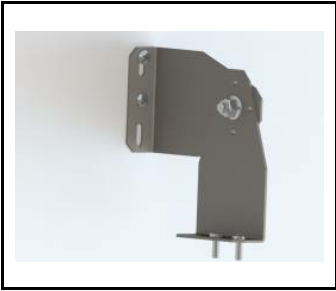
GENERAL CARD

ACCESSORIES AVAILABLE

index	Name
908200	TYTAN LED. ATLAS LED. INDUSTRY LED - adjustable handle (set of 2)
907913	TYTAN LED. ATLAS LED - protective grid 1152mm
907920	TYTAN LED. ATLAS LED - protective grid 1432mm
358388	TYTAN LED CHEMO 1150mm 4500lm 840 - lighting module
358395	TYTAN LED CHEMO 1150mm 7400lm 840 - lighting module
16000507	Breathable gland gray M20*1.5 IP68
358753	TYTAN LED CHEMO 1450mm 10900lm 840 - lighting module
358746	TYTAN LED CHEMO 1450mm 5500lm 840 - lighting module
60000006	M16 stuffing box plug various PA black M-16 - BPM-21
80000378	Cable gland PG 13.5 Titanium PA 6.6 gray with nut
908231	TYTAN LED - holder
80000279	Gland. beam, Codar, soft polyvinyl chloride (PVC-P), gray

TYTAN LED CHEMO

GENERAL CARD



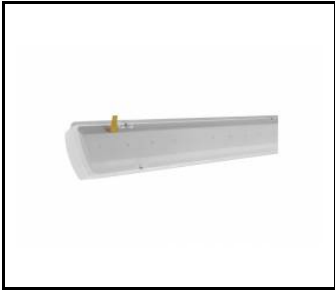
TYTAN LED. ATLAS LED. INDUSTRY LED - adjustable handle (set of 2) (908200)



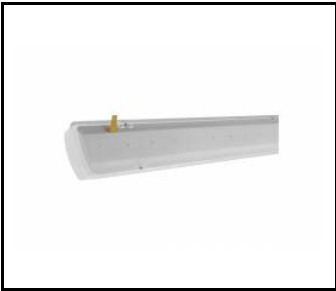
TYTAN LED. ATLAS LED - protective grid 1152mm (907913)



TYTAN LED. ATLAS LED - protective grid 1432mm (907920)



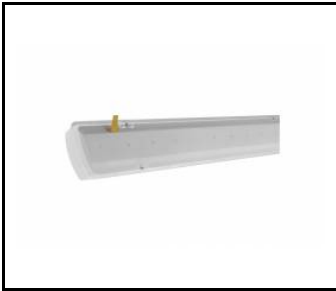
TYTAN LED CHEMO 1150mm 4500lm 840 - lighting module (358388)



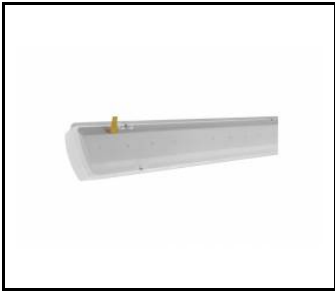
TYTAN LED CHEMO 1150mm 7400lm 840 - lighting module (358395)



Breathable gland gray M20*1.5 IP68 (16000507)



TYTAN LED CHEMO 1450mm 10900lm 840 - lighting module (358753)



TYTAN LED CHEMO 1450mm 5500lm 840 - lighting module (358746)



M16 stuffing box plug various PA black M-16 - BPM-21 (60000006)

Card creation date: 30 September 2021

The company reserves the right to make design changes or upgrades in the presented product. Product data sheet does not constitute an offer. * Parameter tolerance is +/- 10%



This product is a subject to electric and electronic waste equipment regulations (WEEE).



Certificate CE - Nr: 110/2019



Lena Lighting S.A.
ul. Kórnicka 52, 63-000 Środa Wielkopolska
tel. +48 61 28 60 333 (Pn-Pt, 8-16), e-mail: hello@lenalighting.pl, www.lenalighting.pl