

BARIS 52 LED Z 4643MM 8100LM 840 IP44 I CL. PRM ANODA CO 69W NO DIFFUSER

DETAILED CARD



TECHNICAL PARAMETERS

| | |
|---|-----------|
| Index: | 464256 |
| Rated power of the luminaire [W]*: | 69 |
| Luminous flux [lm]*: | 8100 |
| Colour temperature [K]: | 4000 |
| Ingress protection: | IP44 |
| Energy efficiency class: | D |
| Material of the body: | aluminium |
| Colour of the body: | grey |
| Diffuser material: | PC |

CHARACTERISTICS

Suspended or surface-mounted luminaire with classic proportions and modern design. The design of the luminaire allows you to create lines up to 6 meters long with no need to join the profile and up to 25 meters without diffuser joints. Straight connectors and luminous L, T, X, V-shaped bends allow you to create virtually unlimited sequences of straight lines, figures and patterns. The body of the luminaire consists of an anodised aluminium profile in grey or an aluminium profile painted in white or black (other colours available on request). Optical system in the form of a prismatic diffuser (PRM); of a dedicated, flexible opal diffuser that evenly illuminates the luminaire or with a raster that meets the stringent UGR <19 glare requirements. The luminaire's modularity and disassembly capabilities allow the replacement of electronic components such as the LED strip, power supply and the diffuser. The luminaire's profile is compatible with intelligent IOT modules, which also allows to optimise the provided level and amount of light, as well as the direct/indirect version that allows some of the light to be directed upwards to illuminate the ceiling.

APPLICATION

The luminaire is dedicated for indoor use. It is used as a main light source and is conducive to office work that requires eyesight concentration. Unique design, energy-saving LED modules and possible integration with external lighting control systems in the DALI standard make this luminaire suitable for use in modern A+ class office buildings, with particular emphasis on representative rooms, conference rooms, passageways and other places, where the IP44 class is required.

Attention: for surface mounted and suspended BARIS 52 LED luminaire (OPAL, PRM, UGR) it is necessary to order separately a diffuser (available as an accessory) with an appropriate length being the sum of all lines. Luminaire diffuser with a maximum length of 25m, available in 0.5m length increments, are cut to length by the contractor. Connectors (T, X, L, V) are fitted with OPAL diffuser. T, X, L, V connectors with diffusers UGR and PRM are available on request.

BARIS 52 LED Z 4643MM 8100LM 840 IP44 I CL. PRM

ANODA CO 69W NO DIFFUSER

DETAILED CARD

TECHNICAL PARAMETERS TABLE

| | | | |
|--|---------------|-----------------------------------|--------------------------------------|
| Index: | 464256 | Power factor: | 0.97 |
| Rated power of the luminaire [W]: | 69 | Diffuser material: | PC |
| EAN: | 5905963464256 | Colour of the body: | grey |
| Colour temperature [K]: | 4000 | Diffuser colour: | transparent |
| Luminous flux [lm]: | 8100 | Material of the body: | aluminium |
| Diffuser type: | PRM | Dimensions (H/W/T/S) [mm]: | 69/52/4643 |
| Supply voltage [V]: | 220 - 240 | Ingress protection: | IP44 |
| Frequency [Hz]: | 50 - 60 | Mounting version: | suspended |
| Luminous efficacy [lm/W]: | 117 | Impact resistance: | IK03 |
| Energy efficiency class: | D | Net weight [kg]: | 6.960 |
| Electrical protection class: | I | CE certificate: | 230/2023 |
| Colour rendering index: | >80 | ENEC Certificate: | PL BBJ/006/2022/M1 |
| SDCM: | ≤ 3 | PZH certificate: | B-BK-60112-0357/2023 |
| LED lifespan L70B50 [h]: | 120000 | Manual: | Download PDF |
| LED lifespan L80B20 [h]: | 75000 | Plik LDT: | Download |
| LED lifespan L90B10 [h]: | 36000 | | |

BARIS 52 LED Z 4643MM 8100LM 840 IP44 I CL. PRM ANODA CO 69W NO DIFFUSER

DETAILED CARD

ACCESSORIES AVAILABLE

| index | Name |
|--------|---|
| 318023 | Baris 52 - linear connector. straight |
| 318030 | Baris 52 - white power suspension |
| 318047 | Baris 52 - black power suspension |
| 318054 | Baris 52 - anodized power suspension |
| 318061 | Baris 52 - Dali white power suspension |
| 318078 | Baris 52 - Dali black power suspension |
| 318085 | Dali anodized power suspension |
| 318092 | Baris 52 – suspension |
| 465000 | Baris 52 diffuser PLX length of 1500mm (1.5m) |
| 465017 | Baris 52 diffuser PLX length of 2000mm (2.0m) |
| 465024 | Baris 52 diffuser PLX length of 2500mm (2.5m) |
| 465031 | Baris 52 diffuser PLX length of 3000mm (3.0m) |
| 465048 | Baris 52 diffuser PLX length of 3500mm (3.5m) |
| 465055 | Baris 52 diffuser PLX length of 4000mm (4.0m) |
| 465062 | Baris 52 diffuser PLX length of 4500mm (4.5m) |
| 465079 | Baris 52 diffuser PLX length of 5000mm (5.0m) |
| 465086 | Baris 52 diffuser PLX length of 5500mm (5.5m) |
| 465093 | Baris 52 diffuser PLX length of 6000mm (6.0m) |
| 465109 | Baris 52 diffuser PLX length of 6500mm (6.5m) |
| 465116 | Baris 52 diffuser PLX length of 7000mm (7.0m) |
| 465123 | Baris 52 diffuser PLX length of 7500mm (7.5m) |
| 465130 | Baris 52 diffuser PLX length of 8000mm (8.0m) |
| 465147 | Baris 52 diffuser PLX length of 8500mm (8.5m) |
| 465154 | Baris 52 diffuser PLX length of 9000mm (9.0m) |
| 465161 | Baris 52 diffuser PLX length of 9500mm (9.5m) |
| 465178 | Baris 52 diffuser PLX length of 10000mm (10.0m) |
| 465185 | Baris 52 diffuser PLX length of 10500mm (10.5m) |
| 465192 | Baris 52 diffuser PLX length of 11000mm (11.0m) |
| 465208 | Baris 52 diffuser PLX length of 11500mm (11.5m) |
| 465215 | Baris 52 diffuser PLX length of 12000mm (12.0m) |
| 465222 | Baris 52 diffuser PLX length of 12500mm (12.5m) |
| 465239 | Baris 52 diffuser PLX length of 13000mm (13.0m) |
| 465246 | Baris 52 diffuser PLX length of 13500mm (13.5m) |
| 465253 | Baris 52 diffuser PLX length of 14000mm (14.0m) |
| 465260 | Baris 52 diffuser PLX length of 14500mm (14.5m) |

BARIS 52 LED Z 4643MM 8100LM 840 IP44 I CL. PRM ANODA CO 69W NO DIFFUSER

DETAILED CARD

| | |
|--------|---|
| 465277 | Baris 52 diffuser PLX length of 15000mm (15.0m) |
| 465284 | Baris 52 diffuser PLX length of 15500mm (15.5m) |
| 465291 | Baris 52 diffuser PLX length of 16000mm (16.0m) |
| 465307 | Baris 52 diffuser PLX length of 16500mm (16.5m) |
| 465314 | Baris 52 diffuser PLX length of 17000mm (17.0m) |
| 465321 | Baris 52 diffuser PLX length of 17500mm (17.5m) |
| 465338 | Baris 52 diffuser PLX length of 18000mm (18.0m) |
| 465345 | Baris 52 diffuser PLX length of 18500mm (18.5m) |
| 465352 | Baris 52 diffuser PLX length of 19000mm (19.0m) |
| 465369 | Baris 52 diffuser PLX length of 19500mm (19.5m) |
| 465376 | Baris 52 diffuser PLX length of 20000mm (20.0m) |
| 465383 | Baris 52 diffuser PLX length of 20500mm (20.5m) |
| 465390 | Baris 52 diffuser PLX length of 21000mm (21.0m) |
| 465406 | Baris 52 diffuser PLX length of 21500mm (21.5m) |
| 465413 | Baris 52 diffuser PLX length of 22000mm (22.0m) |
| 465420 | Baris 52 diffuser PLX length of 22500mm (22.5m) |
| 465437 | Baris 52 diffuser PLX length of 23000mm (23.0m) |
| 465444 | Baris 52 diffuser PLX length of 23500mm (23.5m) |
| 465451 | Baris 52 diffuser PLX length of 24000mm (24.0m) |
| 465468 | Baris 52 diffuser PLX length of 24500mm (24.5m) |
| 465475 | Baris 52 diffuser PLX length of 25000mm (25.0m) |
| 465482 | Baris 52 diffuser UGR length of 1500mm (1.5m) |
| 465499 | Baris 52 diffuser UGR length of 2000mm (2.0m) |
| 465505 | Baris 52 diffuser UGR length of 2500mm (2.5m) |
| 465512 | Baris 52 diffuser UGR length of 3000mm (3.0m) |
| 465529 | Baris 52 diffuser UGR length of 3500mm (3.5m) |
| 465536 | Baris 52 diffuser UGR length of 4000mm (4.0m) |
| 465543 | Baris 52 diffuser UGR length of 4500mm (4.5m) |
| 465550 | Baris 52 diffuser UGR length of 5000mm (5.0m) |
| 465567 | Baris 52 diffuser UGR length of 5500mm (5.5m) |
| 465574 | Baris 52 diffuser UGR length of 6000mm (6.0m) |
| 465581 | Baris 52 diffuser UGR length of 6500mm (6.5m) |
| 465598 | Baris 52 diffuser UGR length of 7000mm (7.0m) |
| 465604 | Baris 52 diffuser UGR length of 7500mm (7.5m) |
| 465611 | Baris 52 diffuser UGR length of 8000mm (8.0m) |
| 465628 | Baris 52 diffuser UGR length of 8500mm (8.5m) |
| 465635 | Baris 52 diffuser UGR length of 9000mm (9.0m) |
| 465642 | Baris 52 diffuser UGR length of 9500mm (9.5m) |
| 465659 | Baris 52 diffuser UGR length of 10000mm (10.0m) |

BARIS 52 LED Z 4643MM 8100LM 840 IP44 I CL. PRM ANODA CO 69W NO DIFFUSER

DETAILED CARD

| | |
|--------|---|
| 465666 | Baris 52 diffuser UGR length of 10500mm (10.5m) |
| 465673 | Baris 52 diffuser UGR length of 11000mm (11.0m) |
| 465680 | Baris 52 diffuser UGR length of 11500mm (11.5m) |
| 465697 | Baris 52 diffuser UGR length of 12000mm (12.0m) |
| 465703 | Baris 52 diffuser UGR length of 12500mm (12.5m) |
| 465710 | Baris 52 diffuser UGR length of 13000mm (13.0m) |
| 465727 | Baris 52 diffuser UGR length of 13500mm (13.5m) |
| 465734 | Baris 52 diffuser UGR length of 14000mm (14.0m) |
| 465741 | Baris 52 diffuser UGR length of 14500mm (14.5m) |
| 465758 | Baris 52 diffuser UGR length of 15000mm (15.0m) |
| 465765 | Baris 52 diffuser UGR length of 15500mm (15.5m) |
| 465772 | Baris 52 diffuser UGR length of 16000mm (16.0m) |
| 465789 | Baris 52 diffuser UGR length of 16500mm (16.5m) |
| 465796 | Baris 52 diffuser UGR length of 17000mm (17.0m) |
| 465802 | Baris 52 diffuser UGR length of 17500mm (17.5m) |
| 465819 | Baris 52 diffuser UGR length of 18000mm (18.0m) |
| 465826 | Baris 52 diffuser UGR length of 18500mm (18.5m) |
| 465833 | Baris 52 diffuser UGR length of 19000mm (19.0m) |
| 465840 | Baris 52 diffuser UGR length of 19500mm (19.5m) |
| 465857 | Baris 52 diffuser UGR length of 20000mm (20.0m) |
| 465864 | Baris 52 diffuser UGR length of 20500mm (20.5m) |
| 465871 | Baris 52 diffuser UGR length of 21000mm (21.0m) |
| 465888 | Baris 52 diffuser UGR length of 21500mm (21.5m) |
| 465895 | Baris 52 diffuser UGR length of 22000mm (22.0m) |
| 465901 | Baris 52 diffuser UGR length of 22500mm (22.5m) |
| 465918 | Baris 52 diffuser UGR length of 23000mm (23.0m) |
| 465925 | Baris 52 diffuser UGR length of 23500mm (23.5m) |
| 465932 | Baris 52 diffuser UGR length of 24000mm (24.0m) |
| 465949 | Baris 52 diffuser UGR length of 24500mm (24.5m) |
| 465956 | Baris 52 diffuser UGR length of 25000mm (25.0m) |
| 465963 | Baris 52 diffuser PRM length of 1500mm (1.5m) |
| 465970 | Baris 52 diffuser PRM length of 2000mm (2.0m) |
| 465987 | Baris 52 diffuser PRM length of 2500mm (2.5m) |
| 465994 | Baris 52 diffuser PRM length of 3000mm (3.0m) |
| 466007 | Baris 52 diffuser PRM length of 3500mm (3.5m) |
| 466014 | Baris 52 diffuser PRM length of 4000mm (4.0m) |
| 466021 | Baris 52 diffuser PRM length of 4500mm (4.5m) |
| 466038 | Baris 52 diffuser PRM length of 5000mm (5.0m) |
| 466045 | Baris 52 diffuser PRM length of 5500mm (5.5m) |

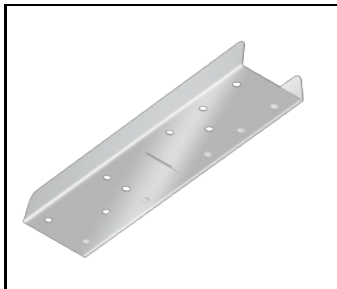
BARIS 52 LED Z 4643MM 8100LM 840 IP44 I CL. PRM ANODA CO 69W NO DIFFUSER

DETAILED CARD

| | |
|--------|---|
| 466052 | Baris 52 diffuser PRM length of 6000mm (6.0m) |
| 466069 | Baris 52 diffuser PRM length of 6500mm (6.5m) |
| 466076 | Baris 52 diffuser PRM length of 7000mm (7.0m) |
| 466083 | Baris 52 diffuser PRM length of 7500mm (7.5m) |
| 466090 | Baris 52 diffuser PRM length of 8000mm (8.0m) |
| 466106 | Baris 52 diffuser PRM length of 8500mm (8.5m) |
| 466113 | Baris 52 diffuser PRM length of 9000mm (9.0m) |
| 466120 | Baris 52 diffuser PRM length of 9500mm (9.5m) |
| 466137 | Baris 52 diffuser PRM length of 10000mm (10.0m) |
| 466144 | Baris 52 diffuser PRM length of 10500mm (10.5m) |
| 466151 | Baris 52 diffuser PRM length of 11000mm (11.0m) |
| 466168 | Baris 52 diffuser PRM length of 11500mm (11.5m) |
| 466175 | Baris 52 diffuser PRM length of 12000mm (12.0m) |
| 466182 | Baris 52 diffuser PRM length of 12500mm (12.5m) |
| 466199 | Baris 52 diffuser PRM length of 13000mm (13.0m) |
| 466205 | Baris 52 diffuser PRM length of 13500mm (13.5m) |
| 466212 | Baris 52 diffuser PRM length of 14000mm (14.0m) |
| 466229 | Baris 52 diffuser PRM length of 14500mm (14.5m) |
| 466236 | Baris 52 diffuser PRM length of 15000mm (15.0m) |
| 466243 | Baris 52 diffuser PRM length of 15500mm (15.5m) |
| 466250 | Baris 52 diffuser PRM length of 16000mm (16.0m) |
| 466267 | Baris 52 diffuser PRM length of 16500mm (16.5m) |
| 466274 | Baris 52 diffuser PRM length of 17000mm (17.0m) |
| 466281 | Baris 52 diffuser PRM length of 17500mm (17.5m) |
| 466298 | Baris 52 diffuser PRM length of 18000mm (18.0m) |
| 466304 | Baris 52 diffuser PRM length of 18500mm (18.5m) |
| 466311 | Baris 52 diffuser PRM length of 19000mm (19.0m) |
| 466328 | Baris 52 diffuser PRM length of 19500mm (19.5m) |
| 466335 | Baris 52 diffuser PRM length of 20000mm (20.0m) |
| 466342 | Baris 52 diffuser PRM length of 20500mm (20.5m) |
| 466359 | Baris 52 diffuser PRM length of 21000mm (21.0m) |
| 466366 | Baris 52 diffuser PRM length of 21500mm (21.5m) |
| 466373 | Baris 52 diffuser PRM length of 22000mm (22.0m) |
| 466380 | Baris 52 diffuser PRM length of 22500mm (22.5m) |
| 466397 | Baris 52 diffuser PRM length of 23000mm (23.0m) |
| 466403 | Baris 52 diffuser PRM length of 23500mm (23.5m) |
| 466410 | Baris 52 diffuser PRM length of 24000mm (24.0m) |
| 466427 | Baris 52 diffuser PRM length of 24500mm (24.5m) |
| 466434 | Baris 52 diffuser PRM length of 25000mm (25.0m) |

BARIS 52 LED Z 4643MM 8100LM 840 IP44 I CL. PRM ANODA CO 69W NO DIFFUSER

DETAILED CARD



Baris 52 - linear connector.
straight (318023)

Card creation date: 03 January 2025

The company reserves the right to make design changes or upgrades in the presented product. Product data sheet does not constitute an offer. * Parameter tolerance is +/- 10%



This product is a subject to electric and electronic waste equipment regulations (WEEE).



Certificate CE - Nr: 230/2023