

TYTAN 2 LED BASIC 1450MM 7900LM 840 IP66 54W

DETAILED CARD



TECHNICAL PARAMETERS

Index:	911552
Ingress protection:	IP66
Impact resistance:	IK09
Rated power of the luminaire [W]*:	54
Luminous flux [lm]*:	7900
Colour temperature [K]:	4000
Energy efficiency class:	C
Material of the body:	PC
Colour of the body:	RAL7035
Diffuser material:	PC

CHARACTERISTICS

TYTAN 2 LED BASIC is a basic line of lighting fixtures which provides an excellent alternative to traditional fluorescent lamps. The lighting fixture has been designed from scratch. TYTAN 2 LED BASIC includes new solutions which improve the light distribution and the temperature balance. The new LED panels ensure high luminous efficacy of <150lm/W. This provides the required level of lighting along with significant energy savings. The lighting fixture includes many improvements which facilitate and speed up the installation process: a solution involving the integration of the diffuser with the LED panel, a diffuser suspension system, and adjustable mounting brackets with an installation tolerance of +/-50 mm. As a standard, the fixture is equipped with robust clips made of stainless steel (INOX). The body of the fixture and the diffuser are resistant to UV radiation.

APPLICATION

The multifunctional LED lamp is designed for use in areas with high requirements for dust and water resistance. Especially recommended for lighting public facilities, including hospitals, educational facilities, halls, garages, passages, warehouses, shops, food industry, commercial and industrial facilities (factories, laboratories), warehouses, parking lots (underground and multi-level), sports stadiums, transport terminals and underground passages. The luminaire is ideal for new lighting applications as well as replacing traditional fluorescent luminaires with energy-saving LED solutions. Its design is adapted for surface and suspended mounting.

TYTAN 2 LED BASIC 1450MM 7900LM 840 IP66 54W

DETAILED CARD

TECHNICAL PARAMETERS TABLE

Index:	911552	Impact resistance:	IK09
EAN:	5905963911552	Ingress protection:	IP66
Light source:	LED module	Mounting version:	surface, suspended
Rated power of the luminaire [W]:	54	Working temperature [°C]:	from -20 to +50
Supply voltage [V]:	220-240	Net weight [kg]:	2.100
Frequency [Hz]:	50 - 60	Category type:	battens
Luminous flux [lm]:	7900	AC voltage range [V]:	220-240
Luminous efficacy [lm/W]:	146	LED lifespan L70B50 [h]:	103000
Energy efficiency class:	C	LED lifespan L80B20 [h]:	65000
Electrical protection class:	I	LED lifespan L90B10 [h]:	32000
Colour temperature [K]:	4000	Photobiological safety:	RG0 - exempt (no photobiological hazard)
Colour rendering index:	80	Category of application:	industrial, commercial facilities
SDCM:	≤ 3	Mark D:	yes
Power factor:	0.90	Warranty [years]:	5
Exchangeable source:	yes	CE certificate:	274/2023
Surge protection [kV]:	2	ENEC Certificate:	0310/ENEC/23
Diffuser material:	PC	PZH certificate:	B-BK-60212-0152/20
Diffuser type:	mat	HACCP:	852/2004
Material of the body:	PC	Manual:	Download PDF
Colour of the body:	RAL7035	Optics material:	PC
Dimensions (H/W/T/S) [mm]:	1432/85/80	Plik LDT:	Download
Mounting dimensions [mm]:	970		

TECHNICAL DETAILS



regulowane uchwyty / adjustable handles / einstellbare Halterungen



system zwieszania klosza / suspension system of the diffuser / hängende Diffusor



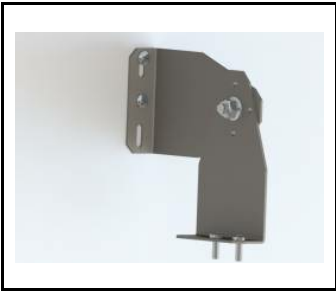
wybór miejsca zasilania / choosing a place of power supply / Stromversorgungsanschluss von mehreren Seite möglich

TYTAN 2 LED BASIC 1450MM 7900LM 840 IP66 54W

DETAILED CARD

ACCESSORIES AVAILABLE

index	Name
908200	TYTAN LED. ATLAS LED. INDUSTRY LED - adjustable handle (set of 2)
907913	TYTAN LED. ATLAS LED - protective grid 1152mm
907920	TYTAN LED. ATLAS LED - protective grid 1432mm
16000507	Breathable gland gray M20*1.5 IP68
60000006	M16 stuffing box plug various PA black M-16 - BPM-21



TYTAN LED. ATLAS LED. INDUSTRY LED - adjustable handle (set of 2) (908200)



TYTAN LED. ATLAS LED - protective grid 1152mm (907913)



TYTAN LED. ATLAS LED - protective grid 1432mm (907920)



Breathable gland gray M20*1.5 IP68 (16000507)



M16 stuffing box plug various PA black M-16 - BPM-21 (60000006)

Card creation date: 08 January 2025
The company reserves the right to make design changes or upgrades in the presented product. Product data sheet does not constitute an offer. * Parameter tolerance is +/- 10%

 This product is a subject to electric and electronic waste equipment regulations (WEEE).

 Certificate CE - Nr: 274/2023