

# QUEST 2 LED L ASW 26300LM I CL. IP66 740 SP10KV (210W)

DETAILED CARD



## TECHNICAL PARAMETERS

Index:	699818
Ingress protection:	IP66
Impact resistance:	IK09
Rated power of the luminaire [W]*:	210
Luminous flux [lm]*:	26300
Colour temperature [K]:	4000
Colour rendering index:	>70
SDCM:	≤ 5
Electrical protection class:	I
Energy efficiency class:	D

## CHARACTERISTICS

High-quality floodlight with inbuilt LED source. The body is made of die-cast aluminium, powder coated in anthracite grey (RAL 7016), and the mounting bracket is made of black-painted steel. The diffuser is made of 5 mm thick tempered glass. It is equipped with directional lens matrices with 3 different light distributions: symmetrical (120°), asymmetric narrow ASN and asymmetric wide ASW. Non-corrosive mounting bracket allowing for adjustment angles between -140° to +185°. The luminaire is available in 2 sizes: M and L. Standard equipped with 0.1m long H07RN-F cable and IP66 quick connector. Wide range of accessories available: protective net, grip for the lighting pole, wall bracket.

## APPLICATION

The fitting is dedicated for lighting elevations and billboards.

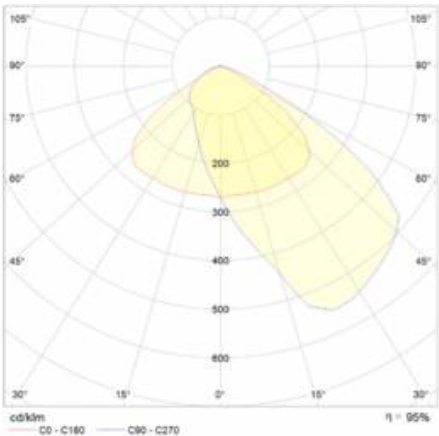
# QUEST 2 LED L ASW 26300LM I CL. IP66 740 SP10KV (210W)

DETAILED CARD

## TECHNICAL PARAMETERS TABLE

Index:	699818	Version:	L
Light source:	LED	Dimensions (H/W/T/S) [mm]:	415/424/37
Rated power of the luminaire [W]:	210	Impact resistance:	IK09
Supply voltage [V]:	220 - 240	Ingress protection:	IP66
Frequency [Hz]:	50 - 60	Mounting version:	surface
Luminous flux [lm]:	26300	Working temperature [°C]:	from -20 to +35
Luminous efficacy [lm/W]:	125	Lateral surface (SCx) [m2]:	0.180
Energy efficiency class:	D	Net weight [kg]:	5.200
Electrical protection class:	I	Warranty [years]:	5
Colour temperature [K]:	4000	LED lifespan L70B50 [h]:	118000
Colour rendering index:	>70	LED lifespan L80B20 [h]:	74000
SDCM:	≤ 5	LED lifespan L90B10 [h]:	37000
Beam angle [°]:	ASW	Cable length [m]:	0.90
Light distribution type:	asymmetric ASW	Photobiological safety:	Risk Group 1 (no photobiological hazard under normal behavioral limitation)
Surge protection [kV]:	10	Mark D:	yes
Diffuser material:	glass	Additional accessories:	protective grid, pole mount, wall mount
Diffuser type:	transparent	The number of implement units:	2
Optics material:	PC	Warranty [years]:	5
Optics:	lens	CE certificate:	<a href="#">86/2021</a>
Material of the body:	aluminium	PZH certificate:	<a href="#">B-BK-60212-0480/21</a>
Colour of the body:	RAL 7016	Manual:	<a href="#">Download PDF</a>

## LIGHT CURVES

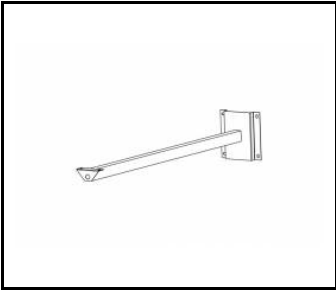


# QUEST 2 LED L ASW 26300LM I CL. IP66 740 SP10KV (210W)

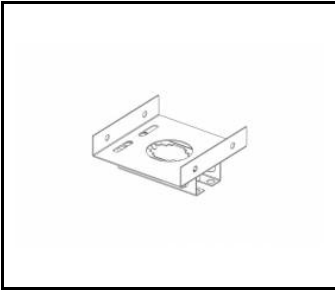
DETAILED CARD

## ACCESSORIES AVAILABLE

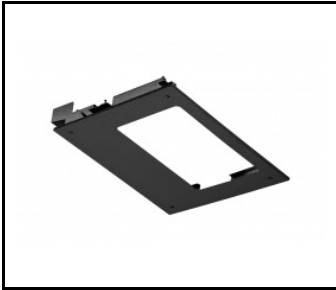
index	Name
559938	QUEST PLUS LED M/L wall holder RAL9006
559921	QUEST PLUS LED M/L galvanized holder for pole
699993	QUEST 2 LED M - surface frame
699986	QUEST 2 LED L - surface frame
699962	QUEST 2 LED L protective grid RAL7016
699979	QUEST 2 LED M protective grid RAL7016
965913	QUEST 2 LED M/L MAX wall mount RAL7016



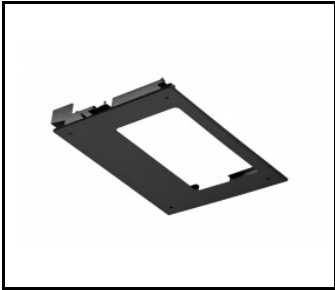
QUEST PLUS LED M/L wall holder  
RAL9006 (559938)



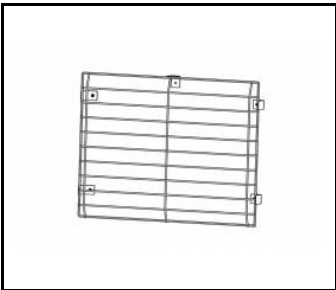
QUEST PLUS LED M/L galvanized  
holder for pole (559921)



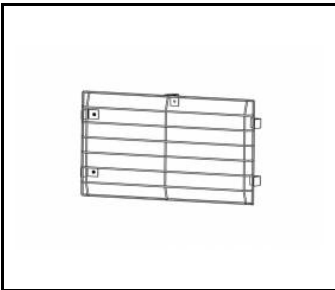
QUEST 2 LED M - surface  
frame (699993)



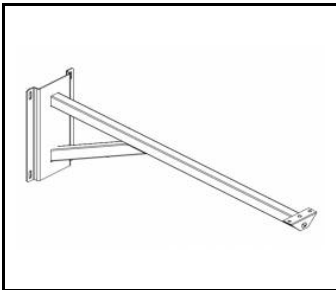
QUEST 2 LED L - surface  
frame (699986)



QUEST 2 LED L protective grid  
RAL7016 (699962)



QUEST 2 LED M protective grid  
RAL7016 (699979)



QUEST 2 LED M/L MAX wall mount  
RAL7016 (965913)

Card creation date:13 March 2024

The company reserves the right to make design changes or upgrades in the presented product. Product data sheet does not constitute an offer. \* Parameter tolerance is +/- 10%

 This product is a subject to electric and electronic waste equipment regulations (WEEE).

 Certificate CE - Nr: 86/2021