

# QUEST 2 LED ENDURA HB NT M 14700LM DALI I CL. IP66 840 SP10KV (108W)

DETAILED CARD



## TECHNICAL PARAMETERS

|                                    |           |
|------------------------------------|-----------|
| Ingress protection:                | IP66      |
| Impact resistance:                 | IK09      |
| Rated power of the luminaire [W]*: | 108       |
| Luminous flux [lm]*:               | 14700     |
| Colour temperature [K]:            | 4000      |
| Color rendering index (Ra) >:      | 80        |
| SDCM:                              | 3         |
| Electrical protection class:       | I         |
| Energy efficiency class:           | C         |
| Material of the body:              | aluminium |

## CHARACTERISTICS

High-quality highbay with inbuilt LED source. The body is made of die-cast aluminium, powder coated in anthracite grey (RAL 7016), and the mounting bracket is made of black-painted steel. The diffuser is made of 5 mm thick tempered glass.

## APPLICATION

QUEST 2 LED ENDURA is a fitting designed for lighting surfaces with the ambient temperature up to +60°C (eg. for industrial plants or bakeries). The unfavourable conditions of the environment do not have influence on the fitting's reliability and efficacy. In rooms such as cold stores, the requirements for lighting are far from standard. Only the fittings especially suited for working in such conditions can be used in rooms with cold temperatures. is a fitting designed for lighting surfaces with the temperature down to -35°C.

# QUEST 2 LED ENDURA HB NT M 14700LM DALI I CL. IP66 840 SP10KV (108W)

DETAILED CARD

## TECHNICAL PARAMETERS TABLE

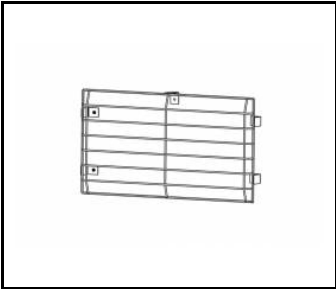
|                                   |           |                                          |                                                                             |
|-----------------------------------|-----------|------------------------------------------|-----------------------------------------------------------------------------|
| Index:                            | 696527    | Dimensions (H/W/T/S) [mm]:               | 321/424/37                                                                  |
| Rated power of the luminaire [W]: | 108       | Impact resistance:                       | IK09                                                                        |
| Luminous flux [lm]:               | 14700     | Ingress protection:                      | IP66                                                                        |
| Supply voltage [V]:               | 220 - 240 | Mounting version:                        | surface                                                                     |
| Frequency [Hz]:                   | 50 - 60   | Working temperature [°C]:                | from -35 to +60                                                             |
| Luminous efficacy [lm/W]:         | 136       | Cable length [m]:                        | 0.70                                                                        |
| Energy efficiency class:          | C         | Net weight [kg]:                         | 4.200                                                                       |
| Electrical protection class:      | I         | Warranty [years]:                        | 5                                                                           |
| Colour temperature [K]:           | 4000      | Version:                                 | 1xM                                                                         |
| Color rendering index (Ra) >:     | 80        | DIMM DALI:                               | yes                                                                         |
| SDCM:                             | 3         | Additional accessories:                  | protective grid                                                             |
| LED lifespan L70B50 [h]:          | 125000    | Photobiological safety:                  | Risk Group 1 (no photobiological hazard under normal behavioral limitation) |
| LED lifespan L80B20 [h]:          | 79000     | Warranty [years]:                        | 5                                                                           |
| LED lifespan L90B10 [h]:          | 38000     | CE certificate:                          | <a href="#">159/2023</a>                                                    |
| Beam angle [°]:                   | 120       | PZH certificate:                         | <a href="#">B-BK-60212-0480/21</a>                                          |
| Surge protection [kV]:            | 10        | Environmental Product Declaration (EPD): | <a href="#">816/2025</a>                                                    |
| Diffuser material:                | glass     | Manual:                                  | <a href="#">Download PDF</a>                                                |
| Material of the body:             | aluminium | Plik LDT:                                | <a href="#">Download</a>                                                    |
| Colour of the body:               | RAL 7016  |                                          |                                                                             |

# QUEST 2 LED ENDURA HB NT M 14700LM DALI I CL. IP66 840 SP10KV (108W)

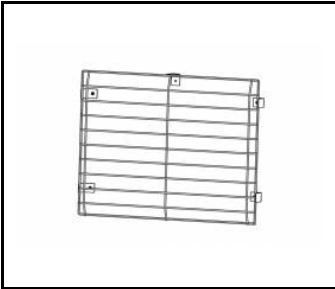
DETAILED CARD

## ACCESSORIES AVAILABLE

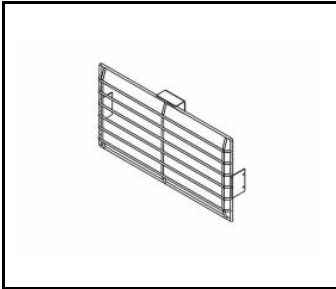
| index  | Name                                                          |
|--------|---------------------------------------------------------------|
| 559907 | QUEST PLUS LED M protective grid RAL9006                      |
| 559914 | QUEST PLUS LED L protective grid RAL9006                      |
| 559952 | QUEST PLUS LED HB M protective grid RAL9006 single suspension |
| 559945 | QUEST PLUS LED HB L protective grid RAL9006 single suspension |
| 699993 | QUEST 2 LED M - recessed frame                                |
| 699986 | QUEST 2 LED L - recessed frame                                |



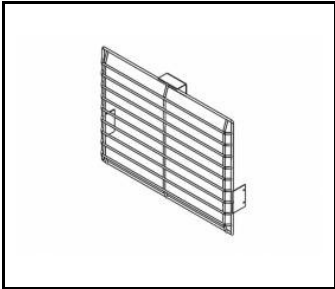
QUEST PLUS LED M protective grid RAL9006 (559907)



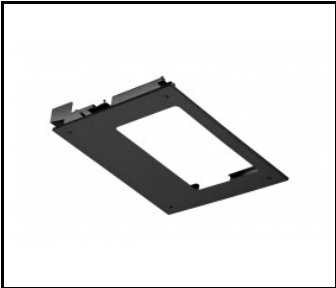
QUEST PLUS LED L protective grid RAL9006 (559914)



QUEST PLUS LED HB M protective grid RAL9006 single suspension (559952)



QUEST PLUS LED HB L protective grid RAL9006 single suspension (559945)



QUEST 2 LED M - recessed frame (699993)



QUEST 2 LED L - recessed frame (699986)