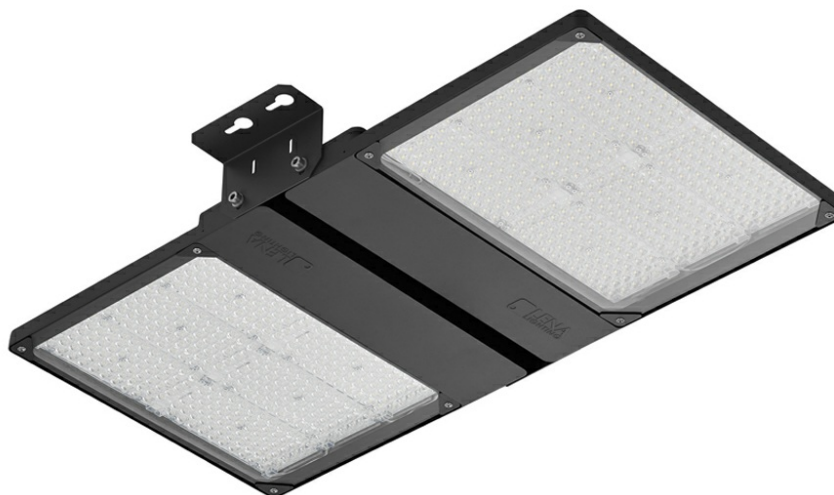


# QUEST 2 LED ENDURA HB NT L 40200LM DALI I CL. IP66 840 SP10KV (290W)

DETAILED CARD



## TECHNICAL PARAMETERS

<b>Ingress protection:</b>	IP66
<b>Impact resistance:</b>	IK09
<b>Rated power of the luminaire [W]*:</b>	290
<b>Luminous flux [lm]*:</b>	40200
<b>Colour temperature [K]:</b>	4000
<b>Colour rendering index:</b>	> 80
<b>SDCM:</b>	≤ 3
<b>Electrical protection class:</b>	I
<b>Energy efficiency class:</b>	C
<b>Material of the body:</b>	aluminium

## CHARACTERISTICS

High-quality highbay with inbuilt LED source. The body is made of die-cast aluminium, powder coated in anthracite grey (RAL 7016), and the mounting bracket is made of black-painted steel. The diffuser is made of 5 mm thick tempered glass.

## APPLICATION

QUEST 2 LED ENDURA is a fitting designed for lighting surfaces with the ambient temperature up to +60°C (eg. for industrial plants or bakeries). The unfavourable conditions of the environment do not have influence on the fitting's reliability and efficacy. In rooms such as cold stores, the requirements for lighting are far from standard. Only the fittings especially suited for working in such conditions can be used in rooms with cold temperatures. is a fitting designed for lighting surfaces with the temperature down to -35°C.

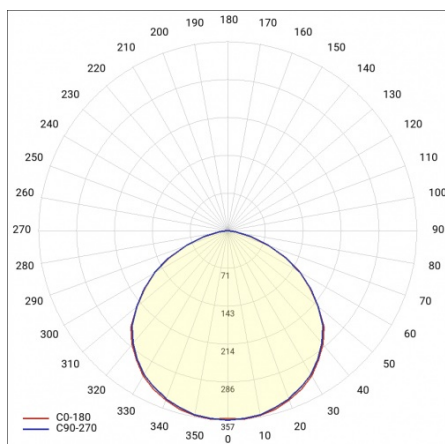
# QUEST 2 LED ENDURA HB NT L 40200LM DALI I CL. IP66 840 SP10KV (290W)

DETAILED CARD

## TECHNICAL PARAMETERS TABLE

Rated power of the luminaire [W]:	290	DIMM DALI:	yes
Index:	696596	Version:	2xL
Colour temperature [K]:	4000	Colour of the body:	RAL 7016
Luminous flux [lm]:	40200	Mounting version:	surface
Beam angle [°]:	120	Dimensions (H/W/T/S) [mm]:	859/424/37
Supply voltage [V]:	220 - 240	Impact resistance:	IK09
Frequency [Hz]:	50 - 60	Ingress protection:	IP66
Luminous efficacy [lm/W]:	139	Working temperature [°C]:	from -35 to +60
Energy efficiency class:	C	Cable length [m]:	0.70
Electrical protection class:	I	Net weight [kg]:	10.600
Colour rendering index:	> 80	Warranty [years]:	5
SDCM:	≤ 3	Additional accessories:	protective grid
LED lifespan L70B50 [h]:	125000	Photobiological safety:	Risk Group 1 (no photobiological hazard under normal behavioral limitation)
LED lifespan L80B20 [h]:	79000	Warranty [years]:	5
LED lifespan L90B10 [h]:	38000	CE certificate:	<a href="#">159/2023</a>
Surge protection [kV]:	10	PZH certificate:	<a href="#">B-BK-60212-0480/21</a>
Diffuser material:	glass	Manual:	<a href="#">Download PDF</a>
Material of the body:	aluminium	Plik LDT:	<a href="#">Download</a>

## LIGHT CURVES



# QUEST 2 LED ENDURA HB NT L 40200LM DALI I CL. IP66 840 SP10KV (290W)

DETAILED CARD

## ACCESSORIES AVAILABLE

index	Name
559907	QUEST PLUS LED M protective grid RAL9006
559914	QUEST PLUS LED L protective grid RAL9006
559952	QUEST PLUS LED HB M protective grid RAL9006 single suspension
559945	QUEST PLUS LED HB L protective grid RAL9006 single suspension
699993	QUEST 2 LED M - recessed frame
699986	QUEST 2 LED L - recessed frame



QUEST PLUS LED M protective grid RAL9006 (559907)



QUEST PLUS LED L protective grid RAL9006 (559914)



QUEST PLUS LED HB M protective grid RAL9006 single suspension (559952)



QUEST PLUS LED HB L protective grid RAL9006 single suspension (559945)



QUEST 2 LED M - recessed frame (699993)



QUEST 2 LED L - recessed frame (699986)

Card creation date: 08 January 2025

The company reserves the right to make design changes or upgrades in the presented product. Product data sheet does not constitute an offer. \* Parameter tolerance is +/- 10%



This product is a subject to electric and electronic waste equipment regulations (WEEE).



Certificate CE - Nr: 159/2023