

QUEST 2 LED ENDURA HB NT L 20100LM DALI I CL. IP66 840 SP10KV (145W)

DETAILED CARD



TECHNICAL PARAMETERS

Ingress protection:	IP66
Impact resistance:	IK09
Rated power of the luminaire [W]*:	145
Luminous flux [lm]*:	20100
Colour temperature [K]:	4000
Colour rendering index:	80
SDCM:	≤ 3
Electrical protection class:	I
Energy efficiency class:	C
Material of the body:	aluminium

CHARACTERISTICS

High-quality highbay with inbuilt LED source. The body is made of die-cast aluminium, powder coated in anthracite grey (RAL 7016), and the mounting bracket is made of black-painted steel. The diffuser is made of 5 mm thick tempered glass.

APPLICATION

QUEST 2 LED ENDURA is a fitting designed for lighting surfaces with the ambient temperature up to +60°C (eg. for industrial plants or bakeries). The unfavourable conditions of the environment do not have influence on the fitting's reliability and efficacy. In rooms such as cold stores, the requirements for lighting are far from standard. Only the fittings especially suited for working in such conditions can be used in rooms with cold temperatures. is a fitting designed for lighting surfaces with the temperature down to -35°C.

QUEST 2 LED ENDURA HB NT L 20100LM DALI I CL. IP66 840 SP10KV (145W)

DETAILED CARD

TECHNICAL PARAMETERS TABLE

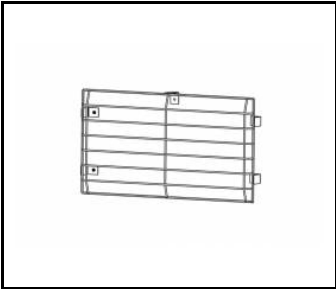
Index:	696589	Dimensions (H/W/T/S) [mm]:	415/424/37
Rated power of the luminaire [W]:	145	Impact resistance:	IK09
Luminous flux [lm]:	20100	Ingress protection:	IP66
Supply voltage [V]:	220 - 240	Mounting version:	surface
Frequency [Hz]:	50 - 60	Working temperature [°C]:	from -35 to +60
Luminous efficacy [lm/W]:	139	Cable length [m]:	0.70
Energy efficiency class:	C	Net weight [kg]:	5.200
Electrical protection class:	I	Warranty [years]:	5
Colour temperature [K]:	4000	Version:	1xL
Colour rendering index:	80	DIMM DALI:	yes
SDCM:	≤ 3	Additional accessories:	protective grid
LED lifespan L70B50 [h]:	125000	Photobiological safety:	Risk Group 1 (no photobiological hazard under normal behavioral limitation)
LED lifespan L80B20 [h]:	79000	Warranty [years]:	5
LED lifespan L90B10 [h]:	38000	CE certificate:	159/2023
Beam angle [°]:	120	PZH certificate:	B-BK-60212-0480/21
Surge protection [kV]:	10	Environmental Product Declaration (EPD):	816/2025
Diffuser material:	glass	Manual:	Download PDF
Material of the body:	aluminium	Plik LDT:	Download
Colour of the body:	RAL 7016		

QUEST 2 LED ENDURA HB NT L 20100LM DALI I CL. IP66 840 SP10KV (145W)

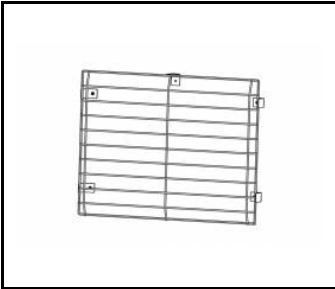
DETAILED CARD

ACCESSORIES AVAILABLE

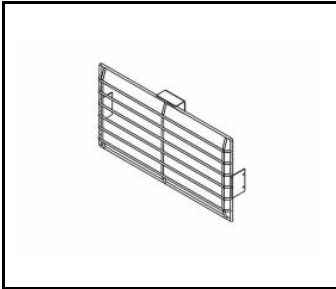
index	Name
559907	QUEST PLUS LED M protective grid RAL9006
559914	QUEST PLUS LED L protective grid RAL9006
559952	QUEST PLUS LED HB M protective grid RAL9006 single suspension
559945	QUEST PLUS LED HB L protective grid RAL9006 single suspension
699993	QUEST 2 LED M - recessed frame
699986	QUEST 2 LED L - recessed frame



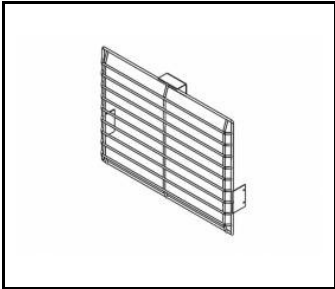
QUEST PLUS LED M protective grid RAL9006 (559907)



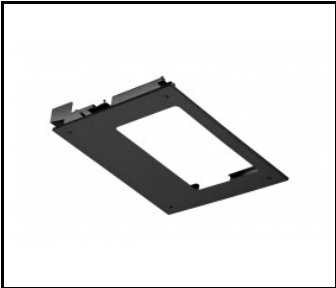
QUEST PLUS LED L protective grid RAL9006 (559914)



QUEST PLUS LED HB M protective grid RAL9006 single suspension (559952)



QUEST PLUS LED HB L protective grid RAL9006 single suspension (559945)



QUEST 2 LED M - recessed frame (699993)



QUEST 2 LED L - recessed frame (699986)

Card creation date:10 July 2025

The company reserves the right to make design changes or upgrades in the presented product. Product data sheet does not constitute an offer. * Parameter tolerance is +/- 10%

 This product is a subject to electric and electronic waste equipment regulations (WEEE).

 Certificate CE - Nr: 159/2023