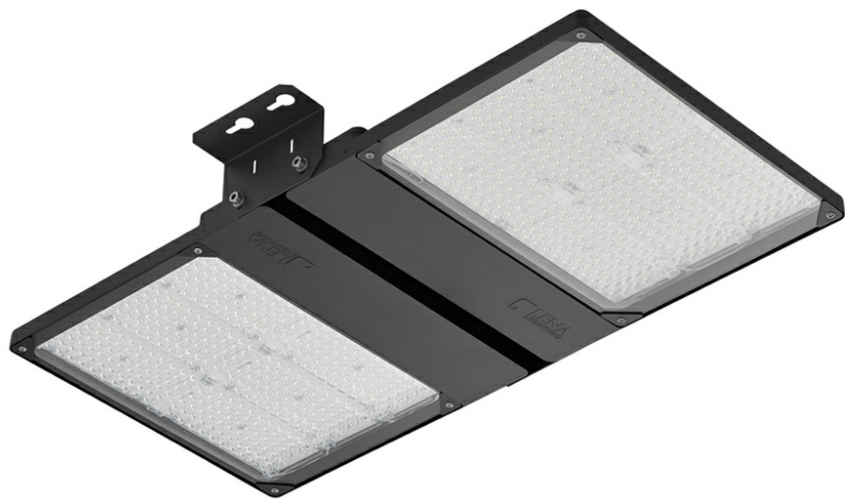


QUEST 2 LED HB NT L 48800LM I CL. IP66 757 SP10KV (364W)

DETAILED CARD



TECHNICAL PARAMETERS

Ingress protection:	IP66
Impact resistance:	IK09
Rated power of the luminaire [W]*:	364
Luminous flux [lm]*:	48800
Colour temperature [K]:	5700
Colour rendering index:	70
SDCM:	≤ 5
Electrical protection class:	I
Energy efficiency class:	D
Material of the body:	aluminium

CHARACTERISTICS

High-quality highbay with inbuilt LED source. The body is made of die-cast aluminium, powder coated in anthracite grey (RAL 7016), and the mounting bracket is made of black-painted steel. The diffuser is made of 5 mm thick tempered glass.

Available version with radio motion sensor:

- allowing additional savings in electricity consumption
- convenient change of parameters by remote control (to be purchased separately).

APPLICATION

The luminaire is dedicated for surface or suspended installation (with chains) for both internal and external use. It is designed for industrial plants, production halls and large area warehouses.

QUEST 2 LED HB NT L 48800LM I CL. IP66 757 SP10KV (364W)

DETAILED CARD

TECHNICAL PARAMETERS TABLE

Index:	742071	Dimensions (H/W/T/S) [mm]:	870/510/85
EAN:	5905963742071	Impact resistance:	IK09
Rated power of the luminaire [W]:	364	Ingress protection:	IP66
Luminous flux [lm]:	48800	Working temperature [°C]:	from -20 to +35
Supply voltage [V]:	220 - 240	Lateral surface (SCx) [m2]:	0.180
Frequency [Hz]:	50 - 60	The number of implement units:	4
Luminous efficacy [lm/W]:	134	Mark D:	yes
Energy efficiency class:	D	Net weight [kg]:	10.400
Electrical protection class:	I	Version:	2xL
Colour temperature [K]:	5700	Light distribution type:	symmetric
Colour rendering index:	70	Efficiency of the luminaire:	0.93
SDCM:	≤ 5	Additional accessories:	protective grid
LED lifespan L70B50 [h]:	156000	Cable length [m]:	0.90
LED lifespan L80B20 [h]:	98000	Photobiological safety:	Risk Group 1 (no photobiological hazard under normal behavioral limitation)
LED lifespan L90B10 [h]:	47000	Warranty [years]:	5
Beam angle [°]:	120	CE certificate:	158/2023
Surge protection [kV]:	10	PZH certificate:	B-BK-60212-0480/21
Diffuser material:	glass	Environmental Product Declaration (EPD):	816/2025
Diffuser type:	transparent	Manual:	Download PDF
Material of the body:	aluminium	Plik LDT:	Download
Colour of the body:	RAL 7016		

QUEST 2 LED HB NT L 48800LM I CL. IP66 757 SP10KV (364W)

DETAILED CARD

ACCESSORIES AVAILABLE

index	Name
699993	QUEST 2 LED M - recessed frame
699986	QUEST 2 LED L - recessed frame
699948	QUEST 2 LED HB L protective grid RAL7016 single suspension
699955	QUEST 2 LED HB M protective grid RAL7016 single suspension
699962	QUEST 2 LED L protective grid RAL7016
699979	QUEST 2 LED M protective grid RAL7016



QUEST 2 LED M - recessed frame (699993)



QUEST 2 LED L - recessed frame (699986)



QUEST 2 LED L protective grid RAL7016 (699962)



QUEST 2 LED M protective grid RAL7016 (699979)