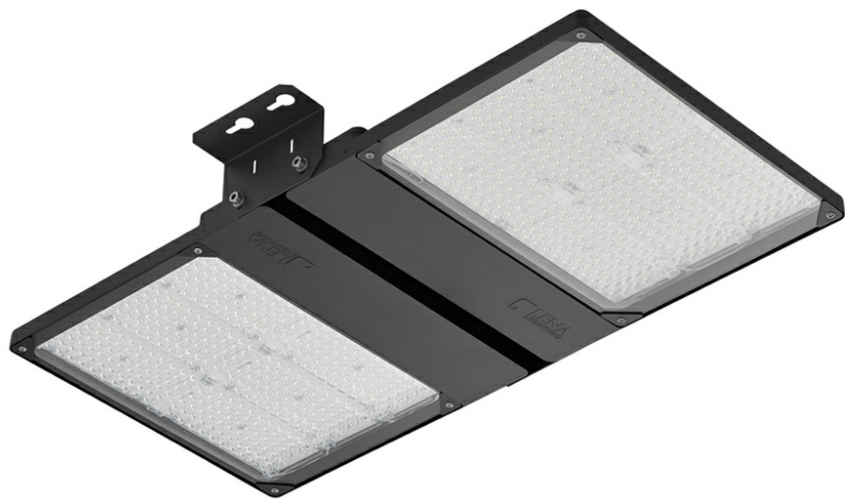


QUEST 2 LED HB NT L 47400LM I CL. IP66 757 70D SP10KV (364W)

DETAILED CARD



TECHNICAL PARAMETERS

| | |
|------------------------------------|-----------|
| Ingress protection: | IP66 |
| Impact resistance: | IK09 |
| Rated power of the luminaire [W]*: | 364 |
| Luminous flux [lm]*: | 47400 |
| Colour temperature [K]: | 5700 |
| Colour rendering index: | 70 |
| SDCM: | ≤ 5 |
| Electrical protection class: | I |
| Energy efficiency class: | D |
| Material of the body: | aluminium |

CHARACTERISTICS

High-quality highbay with inbuilt LED source. The body is made of die-cast aluminium, powder coated in anthracite grey (RAL 7016), and the mounting bracket is made of black-painted steel. The diffuser is made of 5 mm thick tempered glass.

Available version with radio motion sensor:

- allowing additional savings in electricity consumption
- convenient change of parameters by remote control (to be purchased separately).

APPLICATION

The luminaire is dedicated for surface or suspended installation (with chains) for both internal and external use. It is designed for industrial plants, production halls and large area warehouses.

QUEST 2 LED HB NT L 47400LM I CL. IP66 757 70D SP10KV (364W)

DETAILED CARD

TECHNICAL PARAMETERS TABLE

| | | | |
|-----------------------------------|---------------|--|---|
| Index: | 742064 | Colour of the body: | RAL 7016 |
| EAN: | 5905963742064 | Dimensions (H/W/T/S) [mm]: | 870/510/85 |
| Rated power of the luminaire [W]: | 364 | Impact resistance: | IK09 |
| Luminous flux [lm]: | 47400 | Ingress protection: | IP66 |
| Supply voltage [V]: | 220 - 240 | Working temperature [°C]: | from -20 to +35 |
| Frequency [Hz]: | 50 - 60 | Lateral surface (SCx) [m2]: | 0.180 |
| Luminous efficacy [lm/W]: | 130 | The number of implement units: | 4 |
| Energy efficiency class: | D | Mark D: | yes |
| Electrical protection class: | I | Net weight [kg]: | 10.400 |
| Colour temperature [K]: | 5700 | Version: | 2xL |
| Colour rendering index: | 70 | Light distribution type: | 70 UGR<22 |
| SDCM: | ≤ 5 | Efficiency of the luminaire: | 0.93 |
| LED lifespan L70B50 [h]: | 156000 | Additional accessories: | protective grid |
| LED lifespan L80B20 [h]: | 98000 | Cable length [m]: | 0.90 |
| LED lifespan L90B10 [h]: | 47000 | Photobiological safety: | Risk Group 1 (no photobiological hazard under normal behavioral limitation) |
| Beam angle [°]: | 70 | Warranty [years]: | 5 |
| Surge protection [kV]: | 10 | CE certificate: | 158/2023 |
| Diffuser material: | glass | PZH certificate: | B-BK-60212-0480/21 |
| Diffuser type: | transparent | Environmental Product Declaration (EPD): | 816/2025 |
| Optics: | lens | Manual: | Download PDF |
| Material of the body: | aluminium | Plik LDT: | Download |

QUEST 2 LED HB NT L 47400LM I CL. IP66 757 70D SP10KV (364W)

DETAILED CARD

ACCESSORIES AVAILABLE

| index | Name |
|--------|--|
| 699993 | QUEST 2 LED M - recessed frame |
| 699986 | QUEST 2 LED L - recessed frame |
| 699948 | QUEST 2 LED HB L protective grid RAL7016 single suspension |
| 699955 | QUEST 2 LED HB M protective grid RAL7016 single suspension |
| 699962 | QUEST 2 LED L protective grid RAL7016 |
| 699979 | QUEST 2 LED M protective grid RAL7016 |



QUEST 2 LED M - recessed frame (699993)



QUEST 2 LED L - recessed frame (699986)



QUEST 2 LED L protective grid RAL7016 (699962)



QUEST 2 LED M protective grid RAL7016 (699979)

Card creation date:10 July 2025

The company reserves the right to make design changes or upgrades in the presented product. Product data sheet does not constitute an offer. * Parameter tolerance is +/- 10%

 This product is a subject to electric and electronic waste equipment regulations (WEEE).

 Certificate CE - Nr: 158/2023