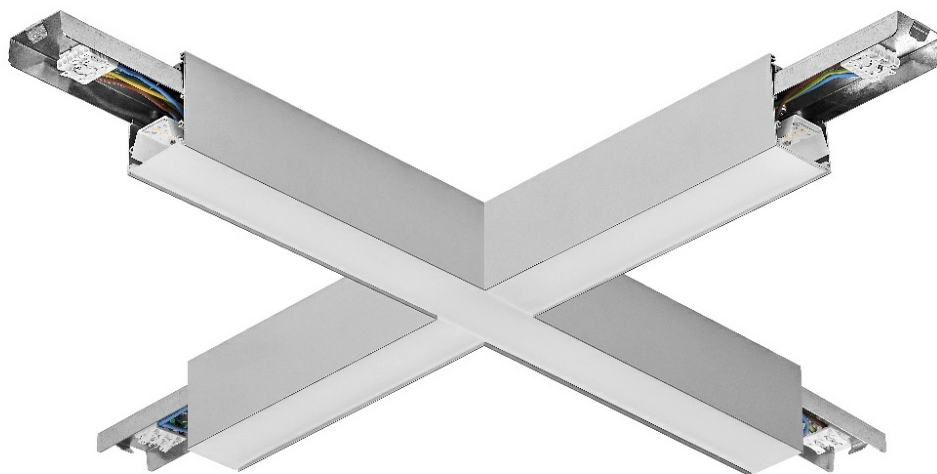


BARIS 52 LED N/Z LINEAR CONNECTOR X 2100LM PLX DALI I CL. IP20 840 ANODE CO (17W)

DETAILED CARD



TECHNICAL PARAMETERS

Rated power of the luminaire [W]*:	17
Luminous flux [lm]*:	2100
Colour temperature [K]:	4000
Energy efficiency class:	D
Electrical protection class:	I
Colour rendering index:	80
SDCM:	≤ 3
Material of the body:	aluminium
Impact resistance:	IK03

CHARACTERISTICS

The key feature of L, T, X, V connectors is that they are equipped with integrated electronics and a diffuser, thanks to which the profile route bends remain illuminated along the entire length. Body is made of anodized aluminium profile in grey or aluminium profile painted white or black (other colors available on request). The optical system is complemented by a dedicated, flexible opal cover that evenly illuminates the connector. There is no division into surface mounted and suspended versions, which make the solution more universal.

Connectors (T, X, L, V) are supplied with an OPAL diffuser.

Connectors T, X, L, V UGR, and PRM diffusers are available on request.

APPLICATION

BARIS 52 LED connectors in the shape of the letter L, T, X, V and straight connectors create extraordinary opportunities to configure the light line matched to the character and shape of the room, allowing you to create virtually unlimited straight sequences, figures and patterns.

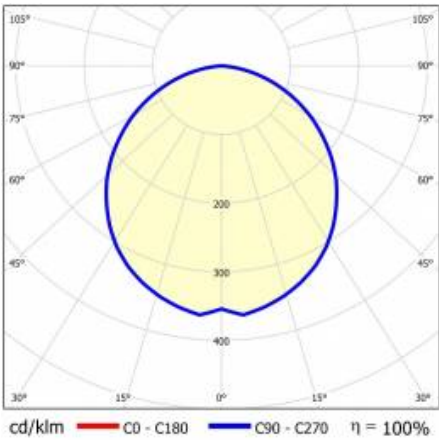
BARIS 52 LED N/Z LINEAR CONNECTOR X 2100LM PLX DALI I CL. IP20 840 ANODE CO (17W)

DETAILED CARD

TECHNICAL PARAMETERS TABLE

Index:	317828	Diffuser material:	PC
EAN:	5905963317828	Diffuser type:	OPAL
Light source:	LED module	Material of the body:	aluminium
Rated power of the luminaire [W]:	17	Colour of the body:	grey
Luminous flux [lm]:	2100	Ingress protection:	IP20
Frequency [Hz]:	50 - 60	Mounting version:	surface, suspended
Luminous efficacy [lm/W]:	124	DIMM DALI:	yes
Energy efficiency class:	D	Net weight [kg]:	2.500
Electrical protection class:	I	Impact resistance:	IK03
Colour temperature [K]:	4000	Dimensions (H/W/T/S) [mm]:	560/560/52
Colour rendering index:	80	Warranty [years]:	5
SDCM:	≤ 3	CE certificate:	338/2023
LED lifespan L70B50 [h]:	112000	ENEC Certificate:	PL BBJ/005/2022/M1
LED lifespan L80B20 [h]:	70 000	Manual:	Download PDF
LED lifespan L90B10 [h]:	34000	Plik LDT:	Download

LIGHT CURVES

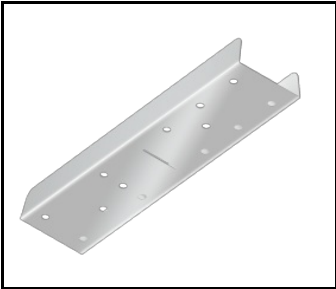


BARIS 52 LED N/Z LINEAR CONNECTOR X 2100LM PLX DALI I CL. IP20 840 ANODE CO (17W)

DETAILED CARD

ACCESSORIES AVAILABLE

index	Name
318023	Baris 52 - linear connector. straight



Baris 52 - linear connector.
straight (318023)

Card creation date: 28 January 2025

The company reserves the right to make design changes or upgrades in the presented product. Product data sheet does not constitute an offer. * Parameter tolerance is +/- 10%

 This product is a subject to electric and electronic waste equipment regulations (WEEE).

 Certificate CE - Nr: 338/2023



Lena Lighting S.A.
ul. Kórnicka 52, 63-000 Środa Wielkopolska
tel. +48 61 28 60 333 (Pn-Pt, 8-16), e-mail: hello@lenalighting.pl, www.lenalighting.pl