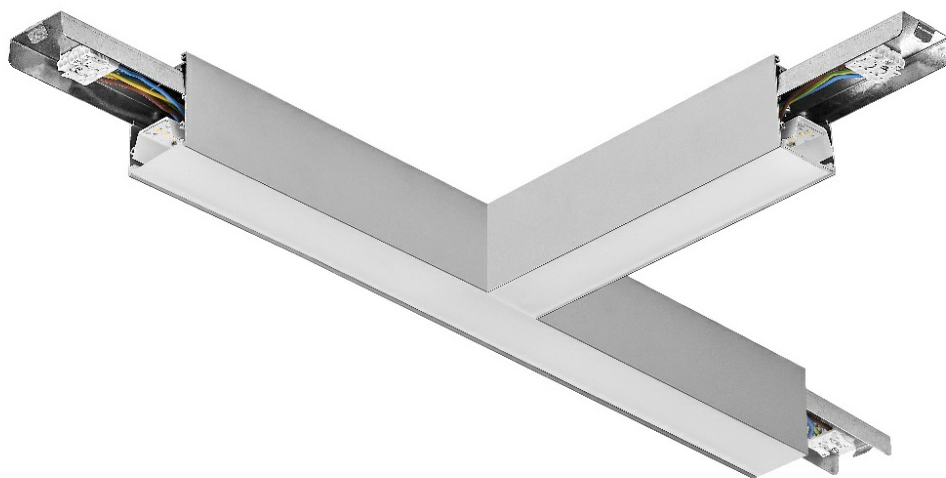


BARIS 52 LED N/Z LINEAR CONNECTOR T 1600LM PLX DALI I CL. IP20 840 ANODE CO (17W)

DETAILED CARD



TECHNICAL PARAMETERS

| | |
|------------------------------------|-----------|
| Rated power of the luminaire [W]*: | 17 |
| Luminous flux [lm]*: | 2100 |
| Colour temperature [K]: | 4000 |
| Energy efficiency class: | D |
| Electrical protection class: | I |
| Colour rendering index: | 80 |
| SDCM: | ≤ 3 |
| Material of the body: | aluminium |
| Impact resistance: | IK03 |

CHARACTERISTICS

The key feature of L, T, X, V connectors is that they are equipped with integrated electronics and a diffuser, thanks to which the profile route bends remain illuminated along the entire length. Body is made of anodized aluminium profile in grey or aluminium profile painted white or black (other colors available on request). The optical system is complemented by a dedicated, flexible opal cover that evenly illuminates the connector. There is no division into surface mounted and suspended versions, which make the solution more universal.

Connectors (T, X, L, V) are supplied with an OPAL diffuser.

Connectors T, X, L, V UGR, and PRM diffusers are available on request.

APPLICATION

BARIS 52 LED connectors in the shape of the letter L, T, X, V and straight connectors create extraordinary opportunities to configure the light line matched to the character and shape of the room, allowing you to create virtually unlimited straight sequences, figures and patterns.

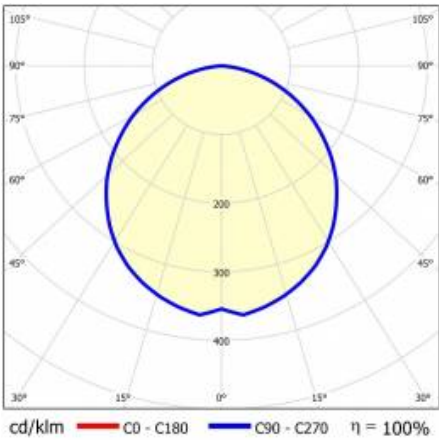
BARIS 52 LED N/Z LINEAR CONNECTOR T 1600LM PLX DALI I CL. IP20 840 ANODE CO (17W)

DETAILED CARD

TECHNICAL PARAMETERS TABLE

| | | | |
|-----------------------------------|---------------|----------------------------|------------------------------|
| Index: | 317811 | Diffuser material: | PC |
| EAN: | 5905963317811 | Diffuser type: | OPAL |
| Light source: | LED module | Material of the body: | aluminium |
| Rated power of the luminaire [W]: | 17 | Colour of the body: | grey |
| Luminous flux [lm]: | 2100 | Ingress protection: | IP20 |
| Frequency [Hz]: | 50 - 60 | Mounting version: | surface, suspended |
| Luminous efficacy [lm/W]: | 124 | DIMM DALI: | yes |
| Energy efficiency class: | D | Net weight [kg]: | 2.160 |
| Electrical protection class: | I | Impact resistance: | IK03 |
| Colour temperature [K]: | 4000 | Dimensions (H/W/T/S) [mm]: | 560/560/52 |
| Colour rendering index: | 80 | Warranty [years]: | 5 |
| SDCM: | ≤ 3 | CE certificate: | 338/2023 |
| LED lifespan L70B50 [h]: | 112000 | ENEC Certificate: | PL BBJ/005/2022/M1 |
| LED lifespan L80B20 [h]: | 70 000 | Manual: | Download PDF |
| LED lifespan L90B10 [h]: | 34000 | Plik LDT: | Download |

LIGHT CURVES

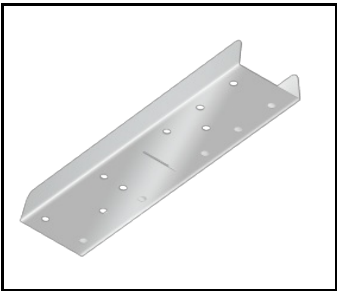


BARIS 52 LED N/Z LINEAR CONNECTOR T 1600LM PLX DALI I CL. IP20 840 ANODE CO (17W)

DETAILED CARD

ACCESSORIES AVAILABLE

| index | Name |
|--------|---------------------------------------|
| 318023 | Baris 52 - linear connector. straight |



Baris 52 - linear connector.
straight (318023)

Card creation date: 28 January 2025

The company reserves the right to make design changes or upgrades in the presented product. Product data sheet does not constitute an offer. * Parameter tolerance is +/- 10%

 This product is a subject to electric and electronic waste equipment regulations (WEEE).

 Certificate CE - Nr: 338/2023



Lena Lighting S.A.
ul. Kórnicka 52, 63-000 Środa Wielkopolska
tel. +48 61 28 60 333 (Pn-Pt, 8-16), e-mail: hello@lenalighting.pl, www.lenalighting.pl