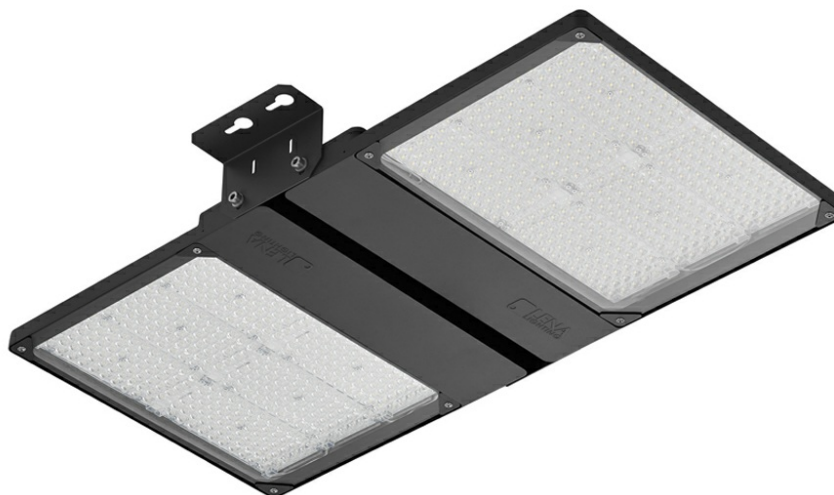


# QUEST 2 LED HB NT L 38400LM I CL. IP66 840 125/30D SP10KV (290W)

DETAILED CARD



## TECHNICAL PARAMETERS

<b>Ingress protection:</b>	IP66
<b>Impact resistance:</b>	IK09
<b>Rated power of the luminaire [W]*:</b>	290
<b>Luminous flux [lm]*:</b>	38400
<b>Colour temperature [K]:</b>	4000
<b>Colour rendering index:</b>	> 80
<b>SDCM:</b>	≤ 3
<b>Electrical protection class:</b>	I
<b>Energy efficiency class:</b>	D
<b>Material of the body:</b>	aluminium

## CHARACTERISTICS

High-quality highbay with inbuilt LED source. The body is made of die-cast aluminium, powder coated in anthracite grey (RAL 7016), and the mounting bracket is made of black-painted steel. The diffuser is made of 5 mm thick tempered glass.

Available version with radio motion sensor:

- allowing additional savings in electricity consumption
- convenient change of parameters by remote control (to be purchased separately).

## APPLICATION

The luminaire is dedicated for surface or suspended installation (with chains) for both internal and external use. It is designed for industrial plants, production halls and large area warehouses.

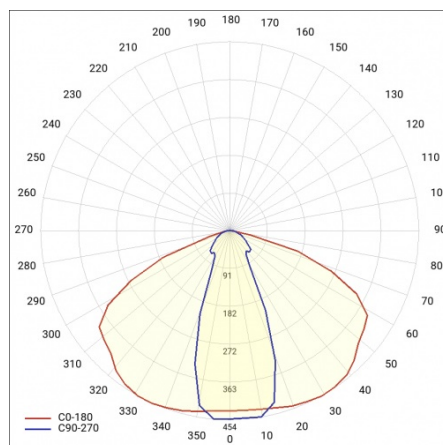
# QUEST 2 LED HB NT L 38400LM I CL. IP66 840 125/30D SP10KV (290W)

DETAILED CARD

## TECHNICAL PARAMETERS TABLE

Rated power of the luminaire [W]:	290	Impact resistance:	IK09
Index:	698453	Ingress protection:	IP66
Colour temperature [K]:	4000	Working temperature [°C]:	from -20 to +35
Luminous flux [lm]:	38400	Version:	2xL
Beam angle [°]:	125/30	Lateral surface (SCx) [m2]:	0.360
Supply voltage [V]:	220 - 240	Mounting version:	surface
Frequency [Hz]:	50 - 60	Mark D:	yes
Luminous efficacy [lm/W]:	132	Net weight [kg]:	10.600
Energy efficiency class:	D	Warranty [years]:	5
Electrical protection class:	I	Light distribution type:	125/30
Colour rendering index:	> 80	Efficiency of the luminaire:	0.88
SDCM:	≤ 3	Additional accessories:	protective grid
LED lifespan L70B50 [h]:	125000	Photobiological safety:	Risk Group 1 (no photobiological hazard under normal behavioral limitation)
LED lifespan L80B20 [h]:	79000	Cable length [m]:	0.90
LED lifespan L90B10 [h]:	38000	The number of implement units:	2
Surge protection [kV]:	10	Warranty [years]:	5
Diffuser material:	glass	CE certificate:	<a href="#">158/2023</a>
Diffuser type:	transparent	PZH certificate:	<a href="#">B-BK-60212-0480/21</a>
Optics:	lens	Manual:	<a href="#">Download PDF</a>
Material of the body:	aluminium	Pliik LDT:	<a href="#">Download</a>
Colour of the body:	anthracite grey		
Dimensions (H/W/T/S) [mm]:	859/424/37		

## LIGHT CURVES



# QUEST 2 LED HB NT L 38400LM I CL. IP66 840 125/30D SP10KV (290W)

DETAILED CARD

## ACCESSORIES AVAILABLE

index	Name
699993	QUEST 2 LED M - recessed frame
699986	QUEST 2 LED L - recessed frame
699948	QUEST 2 LED HB L protective grid RAL7016 single suspension
699955	QUEST 2 LED HB M protective grid RAL7016 single suspension
699962	QUEST 2 LED L protective grid RAL7016
699979	QUEST 2 LED M protective grid RAL7016



QUEST 2 LED M - recessed  
frame (699993)



QUEST 2 LED L - recessed  
frame (699986)



QUEST 2 LED L protective grid  
RAL7016 (699962)



QUEST 2 LED M protective grid  
RAL7016 (699979)

Card creation date: 08 January 2025

The company reserves the right to make design changes or upgrades in the presented product. Product data sheet does not constitute an offer. \* Parameter tolerance is +/- 10%



This product is a subject to electric and electronic waste equipment regulations (WEEE).



Certificate CE - Nr: 158/2023