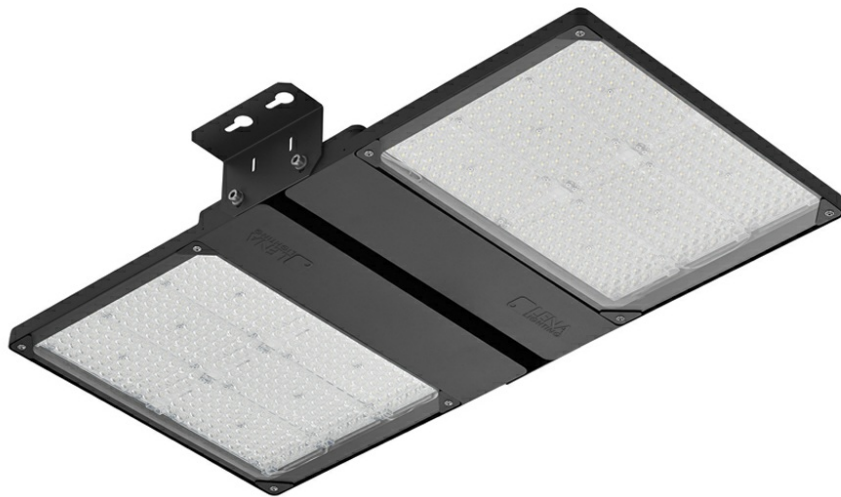


QUEST 2 LED HB NT L 38400LM DALI I CL. IP66 840 125/30D SP10KV (290W)

DETAILED CARD



TECHNICAL PARAMETERS

Ingress protection:	IP66
Impact resistance:	IK09
Rated power of the luminaire [W]*:	290
Luminous flux [lm]*:	38400
Colour temperature [K]:	4000
Colour rendering index:	> 80
SDCM:	≤ 3
Electrical protection class:	I
Energy efficiency class:	D
Material of the body:	aluminium

CHARACTERISTICS

High-quality highbay with inbuilt LED source. The body is made of die-cast aluminium, powder coated in anthracite grey (RAL 7016), and the mounting bracket is made of black-painted steel. The diffuser is made of 5 mm thick tempered glass.

Available version with radio motion sensor:

- allowing additional savings in electricity consumption
- convenient change of parameters by remote control (to be purchased separately).

APPLICATION

The luminaire is dedicated for surface or suspended installation (with chains) for both internal and external use. It is designed for industrial plants, production halls and large area warehouses.

QUEST 2 LED HB NT L 38400LM DALI I CL. IP66 840 125/30D SP10KV (290W)

DETAILED CARD

TECHNICAL PARAMETERS TABLE

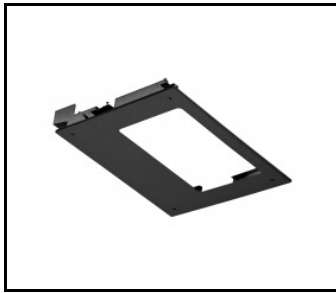
Index:	698576	Dimensions (H/W/T/S) [mm]:	859/424/37
Rated power of the luminaire [W]:	290	Impact resistance:	IK09
Luminous flux [lm]:	38400	Ingress protection:	IP66
Supply voltage [V]:	220 - 240	Working temperature [°C]:	from -20 to +35
Frequency [Hz]:	50 - 60	Lateral surface (SCx) [m2]:	0.360
Luminous efficacy [lm/W]:	132	DIMM DALI:	yes
Energy efficiency class:	D	Mark D:	yes
Electrical protection class:	I	Net weight [kg]:	10.600
Colour temperature [K]:	4000	Warranty [years]:	5
Colour rendering index:	> 80	Version:	2xL
SDCM:	≤ 3	Light distribution type:	125/30
LED lifespan L70B50 [h]:	125000	Efficiency of the luminaire:	0.88
LED lifespan L80B20 [h]:	79000	Additional accessories:	protective grid
LED lifespan L90B10 [h]:	38000	Photobiological safety:	Risk Group 1 (no photobiological hazard under normal behavioral limitation)
Beam angle [°]:	125/30	Cable length [m]:	0.90
Surge protection [kV]:	10	The number of implement units:	2
Diffuser material:	glass	Warranty [years]:	5
Diffuser type:	transparent	CE certificate:	158/2023
Optics:	lens	PZH certificate:	B-BK-60212-0480/21
Material of the body:	aluminium	Manual:	Download PDF
Colour of the body:	anthracite grey		

QUEST 2 LED HB NT L 38400LM DALI I CL. IP66 840 125/30D SP10KV (290W)

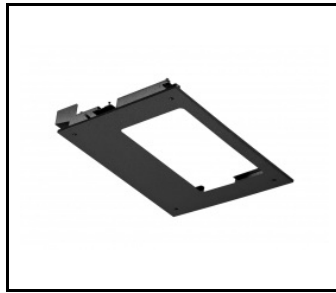
DETAILED CARD

ACCESSORIES AVAILABLE

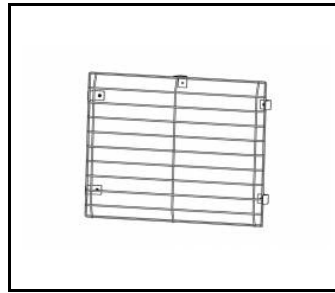
index	Name
699993	QUEST 2 LED M - recessed frame
699986	QUEST 2 LED L - recessed frame
699948	QUEST 2 LED HB L protective grid RAL7016 single suspension
699955	QUEST 2 LED HB M protective grid RAL7016 single suspension
699962	QUEST 2 LED L protective grid RAL7016
699979	QUEST 2 LED M protective grid RAL7016



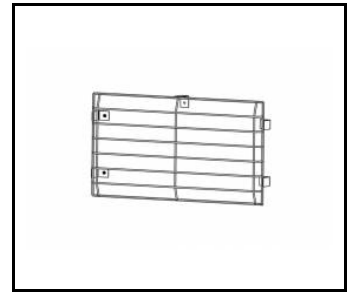
QUEST 2 LED M - recessed
frame (699993)



QUEST 2 LED L - recessed
frame (699986)



QUEST 2 LED L protective grid
RAL7016 (699962)



QUEST 2 LED M protective grid
RAL7016 (699979)

Card creation date: 16 October 2024

The company reserves the right to make design changes or upgrades in the presented product. Product data sheet does not constitute an offer. * Parameter tolerance is +/- 10%



This product is a subject to electric and electronic waste equipment regulations (WEEE).



Certificate CE - Nr: 158/2023