

QUEST 2 LED HB M 29400LM RCR I CL. IP66 840 SP10KV (216W)

DETAILED CARD



TECHNICAL PARAMETERS

Ingress protection:	IP65
Impact resistance:	IK09
Rated power of the luminaire [W]*:	216
Luminous flux [lm]*:	29400
Colour temperature [K]:	4000
Colour rendering index:	80
SDCM:	≤ 3
Electrical protection class:	I
Energy efficiency class:	C
Material of the body:	aluminium

CHARACTERISTICS

High-quality highbay with inbuilt LED source. The body is made of die-cast aluminium, powder coated in anthracite grey (RAL 7016), and the mounting bracket is made of black-painted steel. The diffuser is made of 5 mm thick tempered glass.

Available version with radio motion sensor:

- allowing additional savings in electricity consumption
- convenient change of parameters by remote control (to be purchased separately).

APPLICATION

The luminaire is dedicated for surface or suspended installation (with chains) for both internal and external use. It is designed for industrial plants, production halls and large area warehouses.

QUEST 2 LED HB M 29400LM RCR I CL. IP66 840 SP10KV (216W)

DETAILED CARD

TECHNICAL PARAMETERS TABLE

Index:	698255	Impact resistance:	IK09
Rated power of the luminaire [W]:	216	Ingress protection:	IP65
Luminous flux [lm]:	29400	Working temperature [°C]:	from -20 to +35
Supply voltage [V]:	220 - 240	Lateral surface (SCx) [m2]:	0.280
Frequency [Hz]:	50 - 60	Motion sensor:	yes
Luminous efficacy [lm/W]:	136	The number of implement units:	2
Energy efficiency class:	C	Mark D:	yes
Electrical protection class:	I	Net weight [kg]:	8.600
Colour temperature [K]:	4000	Version:	2xM
Colour rendering index:	80	Light distribution type:	symmetric
SDCM:	≤ 3	Efficiency of the luminaire:	0.89
LED lifespan L70B50 [h]:	125000	Additional accessories:	protective grid
LED lifespan L80B20 [h]:	79000	Cable length [m]:	0.90
LED lifespan L90B10 [h]:	38000	Photobiological safety:	Risk Group 1 (no photobiological hazard under normal behavioral limitation)
Beam angle [°]:	120	Warranty [years]:	5
Surge protection [kV]:	10	CE certificate:	158/2023
Diffuser material:	glass	PZH certificate:	B-BK-60212-0480/21
Diffuser type:	transparent	Environmental Product Declaration (EPD):	816/2025
Material of the body:	aluminium	Manual:	Download PDF
Colour of the body:	anthracite grey	Plik LDT:	Download
Dimensions (H/W/T/S) [mm]:	671/424/37		

QUEST 2 LED HB M 29400LM RCR I CL. IP66 840 SP10KV (216W)

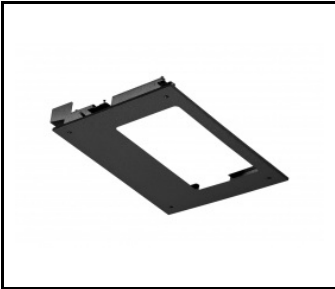
DETAILED CARD

ACCESSORIES AVAILABLE

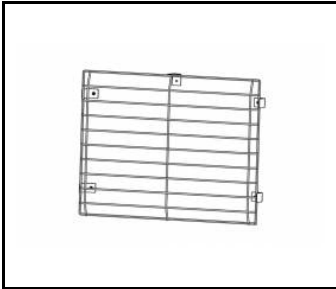
index	Name
699993	QUEST 2 LED M - recessed frame
699986	QUEST 2 LED L - recessed frame
699948	QUEST 2 LED HB L protective grid RAL7016 single suspension
699955	QUEST 2 LED HB M protective grid RAL7016 single suspension
699962	QUEST 2 LED L protective grid RAL7016
699979	QUEST 2 LED M protective grid RAL7016



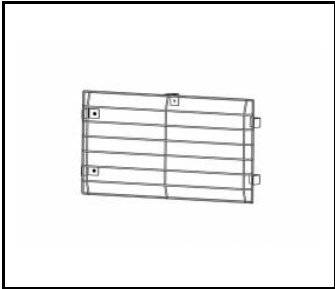
QUEST 2 LED M - recessed frame (699993)



QUEST 2 LED L - recessed frame (699986)



QUEST 2 LED L protective grid RAL7016 (699962)



QUEST 2 LED M protective grid RAL7016 (699979)