

# INDUSTRY IP66 LED 1150MM 10150LM 840 70D (67W)

DETAILED CARD



## TECHNICAL PARAMETERS

Index:	663604
Ingress protection:	IP66
Nominal power [W]:	67
Luminous flux [lm]*:	10150
Colour temperature [K]:	4000
Color rendering index (Ra) >:	80
SDCM:	3
Energy efficiency class:	C
Material of the body:	aluminium
Diffuser material:	glass

## CHARACTERISTICS

INDUSTRY IP66 LED is a hermetic beam from the NEXT GEN line, which is a new generation of lamps dedicated to LED technology. The body, made from scratch, made of aluminum profile and subjected to anodization process, provides the luminaire with strength and solidity, and the narrow side profile allows installation in hard to reach places. LEDs from a reputable manufacturer and new LED modules have an impact on very high luminous efficacy: up to 163 lm / W. This guarantees that the required lighting level is achieved and that significant energy savings are achieved. The lampshade is made of UV resistant tempered glass. The combination of materials (aluminum and toughened glass) and a non-dismantled construction with an external connector provides the luminaire with high resistance to harsh environmental conditions.

Suitable for surface and suspended mounting.

Options: any RAL color; diffuser made of PC or PMMA.

## APPLICATION

The multi-purpose LED luminaire has been designed for use in areas requiring high dust and water resistance. It is especially recommended for use in rooms intended for medical and laboratory purposes as well as in industrial premises.

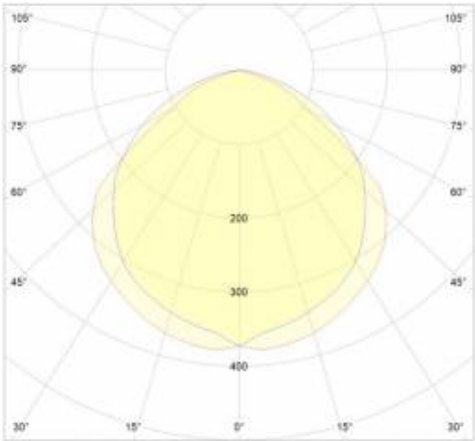
# INDUSTRY IP66 LED 1150MM 10150LM 840 70D (67W)

DETAILED CARD

## TECHNICAL PARAMETERS TABLE

Index:	663604	Diffuser colour:	transparent
EAN:	5905963663604	Optics:	lens
Rated power of the luminaire [W]:	72.46	Optics material:	PMMA
Luminous flux [lm]:	10150	Material of the body:	aluminium
Supply voltage [V]:	220 - 240	Colour of the body:	grey
Frequency [Hz]:	50 - 60	Dimensions (H/W/T/S) [mm]:	1150/63/55
Luminous efficacy [lm/W]:	140	Impact resistance:	IK08
Energy efficiency class:	C	Ingress protection:	IP66
Electrical protection class:	I	Working temperature [°C]:	from -15 to +35
Colour temperature [K]:	4000	The number of implement units:	1
Color rendering index (Ra) >:	80	Net weight [kg]:	2.570
SDCM:	3	Warranty [years]:	5
LED lifespan L70B50 [h]:	108000	CE certificate:	<a href="#">146/2023</a>
LED lifespan L80B20 [h]:	71000	PZH certificate:	<a href="#">B-BK-60212-0322/20</a>
LED lifespan L90B10 [h]:	33000	Manual:	<a href="#">Download PDF</a>
Beam angle [°]:	70	Environmental Product Declaration (EPD):	<a href="#">852/2025</a>
Diffuser material:	glass	Plik LDT:	<a href="#">Download</a>
Diffuser type:	transparent		

## LIGHT CURVES

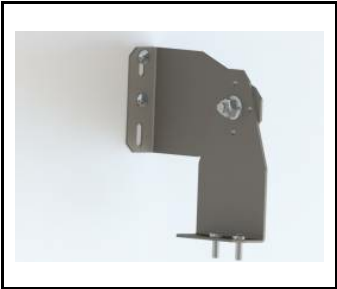


# INDUSTRY IP66 LED 1150MM 10150LM 840 70D (67W)

DETAILED CARD

## ACCESSORIES AVAILABLE

index	Name
908200	TYTAN LED. ATLAS LED. INDUSTRY LED - adjustable handle (set of 2)



TYTAN LED. ATLAS LED. INDUSTRY  
LED - adjustable handle (set of  
2) (908200)

Card creation date: 16 December 2025  
The company reserves the right to make design changes or upgrades in the presented product. Product data sheet does not constitute an offer. \* Parameter tolerance is +/- 10%

 This product is a subject to electric and electronic waste equipment regulations (WEEE).

 Certificate CE - Nr: 146/2023