

TYTAN 2 LED 1150MM 9050LM 840 IP66 DALI 55W

DETAILED CARD



TECHNICAL PARAMETERS

Index:	941177
Ingress protection:	IP66
Impact resistance:	IK09
Nominal power [W]:	55
Luminous flux [lm]*:	9050
Colour temperature [K]:	4000
Energy efficiency class:	C
Material of the body:	PC
Colour of the body:	grey
Diffuser material:	PC

CHARACTERISTICS

TYTAN 2 LED is a fitting from NEXT GEN line, which is a new generation of fittings in LED technology. The fitting, designed from scratch, allows new solutions improving the light distribution and temperature balance. Branded LED diodes and new LED modules have influence on a very high luminous efficacy: 155 lm/W. It guarantees the best required lighting level and energy saving up to 68%. The solution based on integration of the diffuser and LED module is applied in the fitting. The fitting has a lot of facilities making the mounting easier and faster: the system of diffuser suspension, adjustable mounting brackets ensuring the mounting tolerance +/-50mm. Standard equipment of the fitting: clips made of stainless steel (INOX). The body of the fixture and the diffuser are resistant to UV radiation

APPLICATION

The multifunctional LED lamp is designed for use in areas with high requirements for dust and water resistance. Especially recommended for lighting public facilities, including hospitals, educational facilities, halls, garages, passages, warehouses, shops, food industry, commercial and industrial facilities (factories, laboratories), warehouses, parking lots (underground and multi-level), sports stadiums, transport terminals and underground passages. The luminaire is ideal for new lighting applications as well as replacing traditional fluorescent luminaires with energy-saving LED solutions. Its design is adapted for surface and suspended mounting.

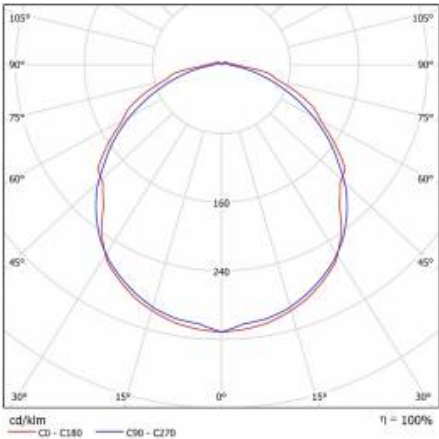
TYTAN 2 LED 1150MM 9050LM 840 IP66 DALI 55W

DETAILED CARD

TECHNICAL PARAMETERS TABLE

Index:	941177	Impact resistance:	IK09
EAN:	5905963941177	Ingress protection:	IP66
Light source:	LED module	Mounting version:	surface, suspended
Nominal power [W]:	55	Working temperature [°C]:	from -20 to +35
Rated power of the luminaire [W]:	59.30	DIMM DALI:	yes
Supply voltage [V]:	220-240	Net weight [kg]:	1.500
Frequency [Hz]:	50 - 60	Mark D:	yes
Luminous flux [lm]:	9050	Category type:	battens
Luminous efficacy [lm/W]:	153	Category of application:	industrial
Energy efficiency class:	C	AC voltage range [V]:	220 - 240
Electrical protection class:	I	LED lifespan L70B50 [h]:	109000
Colour temperature [K]:	4000	LED lifespan L80B20 [h]:	69000
Colour rendering index:	80	LED lifespan L90B10 [h]:	34000
SDCM:	≤ 3	ETIM class:	EC000109
Power factor:	0.95	Photobiological safety:	RG0 - exempt (no photobiological hazard)
Exchangeable source:	yes	Warranty [years]:	5
Diffuser material:	PC	CE certificate:	127/2023
Diffuser type:	matt	PZH certificate:	B-BK-60212-0152/20
Material of the body:	PC	HACCP:	852/2004
Colour of the body:	grey	Manual:	Download PDF
Dimensions (H/W/T/S) [mm]:	1152/85/80	ENEC Certificate:	0310/ENEC/23
Mounting dimensions [mm]:	800	Plik LDT:	Download

LIGHT CURVES



TYTAN 2 LED 1150MM 9050LM 840 IP66 DALI 55W

DETAILED CARD

TECHNICAL DETAILS



regulowane uchwyty / adjustable
handles / einstellbare Halterungen



system zwieszania klosza / suspension
system of the diffuser / hängende
Diffusor



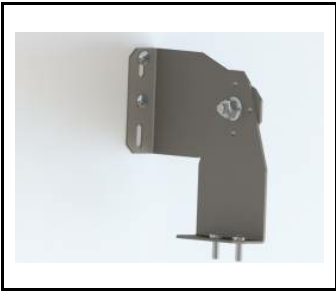
wybór miejsca zasilania / choosing a
place of power supply /
Stromversorgungsanschluss von
mehreren Seite möglich

TYTAN 2 LED 1150MM 9050LM 840 IP66 DALI 55W

DETAILED CARD

ACCESSORIES AVAILABLE

index	Name
908200	TYTAN LED. ATLAS LED. INDUSTRY LED - adjustable handle (set of 2)
60000006	M16 stuffing box plug various PA black M-16 - BPM-21
941375	TYTAN 2 LED 1150mm 2650lm 840 - lighting module
941382	TYTAN 2 LED 1150mm 4550lm 840 - lighting module
941405	TYTAN 2 LED 1450mm 5650lm 840 - lighting module
941412	TYTAN 2 LED 1450mm 7050lm 840 - lighting module
941429	TYTAN 2 LED 1450mm 11300lm 840 - lighting module
941856	TYTAN 2 LED 1150mm 2450lm 830 - lighting module
941863	TYTAN 2 LED 1150mm 4150lm 830 - lighting module
941870	TYTAN 2 LED 1150mm 7300/8400lm 830 - lighting module
941887	TYTAN 2 LED 1450mm 5250lm 830 - lighting module
941894	TYTAN 2 LED 1450mm 6550lm 830 - lighting module
941900	TYTAN 2 LED 1450mm 10500lm 830 - lighting module
942358	TYTAN 2 LED 1150mm 2650lm 850 - lighting module
942365	TYTAN 2 LED 1150mm 4550lm 850 - lighting module
942372	TYTAN 2 LED 1150mm 7850/9050lm 850 - lighting module
942389	TYTAN 2 LED 1450mm 5650lm 850 - lighting module
942396	TYTAN 2 LED 1450mm 7050lm 850 - lighting module
942402	TYTAN 2 LED 1450mm 11300lm 850 - lighting module



TYTAN LED. ATLAS LED. INDUSTRY LED - adjustable handle (set of 2) (908200)



M16 stuffing box plug various PA black M-16 - BPM-21 (60000006)

Card creation date:13 March 2025

The company reserves the right to make design changes or upgrades in the presented product. Product data sheet does not constitute an offer. * Parameter tolerance is +/- 10%

 This product is a subject to electric and electronic waste equipment regulations (WEEE).

 Certificate CE - Nr: 127/2023



Lena Lighting S.A.
ul. Kórnicka 52, 63-000 Środa Wielkopolska
tel. +48 61 28 60 333 (Pn-Pt, 8-16), e-mail: hello@lenalighting.pl, www.lenalighting.pl