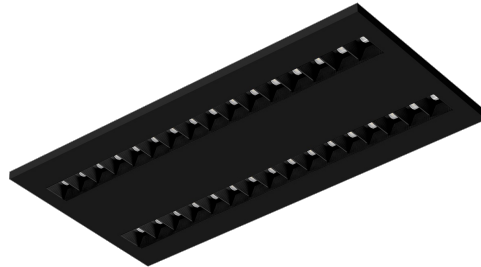


# TERRA 2 LED N 595X300MM X2 2550LM 840 BLACK MAT STRUCTURE (31W)

DETAILED CARD



## TECHNICAL PARAMETERS

|                                   |                     |
|-----------------------------------|---------------------|
| <b>Index:</b>                     | 237058              |
| <b>Ingress protection:</b>        | IP20                |
| <b>Nominal power [W]:</b>         | 31                  |
| <b>Luminous flux [lm]*:</b>       | 2550                |
| <b>Colour rendering index:</b>    | >80                 |
| <b>SDCM:</b>                      | ≤ 3                 |
| <b>Material of the body:</b>      | powder coated steel |
| <b>Mounting version:</b>          | surface             |
| <b>Dimensions (H/W/T/S) [mm]:</b> | 595/300/36          |
| <b>Warranty [years]:</b>          | 5                   |

## CHARACTERISTICS

LED luminaire with high total luminous Flux. Made of powder-coated white steel sheet. The luminaire has a patented HE reflector installed, which ensures efficiency and effectively eliminates glare. Available mounting versions: surface mounted, surface mounted on neodymium magnets (magnet ver. / N-MAG), flush-mounted in modular or KG ceilings (using an adapter) or suspended. In the surface-mounted version, solutions influencing the speed and safety of installation were used. In addition, the versions with neodymium magnets shorten the installation time of surface-mounted versions to an absolute minimum.

## APPLICATION

General purpose surface mounted luminaire for indoor application in offices or other utility rooms. Appropriate as the main light source even when the work requires eyesight concentration.

# TERRA 2 LED N 595X300MM X2 2550LM 840 BLACK MAT STRUCTURE (31W)

DETAILED CARD


## TECHNICAL PARAMETERS TABLE

|  |            |                                  |   |
|--|------------|----------------------------------|---|
| <b>Nominal power [W]:</b>                | 31         | <b>SDCM:</b>                     | ≤ 3   |
| <b>Index:</b>                            | 237058     | <b>Power factor:</b>             | 0.95  |
| <b>Colour temperature [K]:</b>           | 4000       | <b>Material of the body:</b>     | powder coated steel   |
| <b>Light source:</b>                     | LED module | <b>Ingress protection:</b>       | IP20  |
| <b>Luminous flux [lm]:</b>               | 2550       | <b>Mounting version:</b>         | surface   |
| <b>Optics:</b>                           | black HE   | <b>Working temperature [°C]:</b> | from -20 to +35   |
| <b>Rated power of the luminaire [W]:</b> | 34.20      | <b>Category type:</b>            | louvres   |
| <b>Version:</b>                          | 2x1        | <b>Category of application:</b>  | commercial facilities, educational institutions                             |
| <b>Supply voltage [V]:</b>               | 220-240    | <b>LED lifespan L70B50 [h]:</b>  | 132000  |
| <b>Colour of the body:</b>               | black mat  | <b>LED lifespan L80B20 [h]:</b>  | 84000   |
| <b>Frequency [Hz]:</b>                   | 50 - 60    | <b>LED lifespan L90B10 [h]:</b>  | 42000   |
| <b>Dimensions (H/W/T/S) [mm]:</b>        | 595/300/36 | <b>Photobiological safety:</b>   | Risk Group 1 (no photobiological hazard under normal behavioral limitation) |
| <b>Luminous efficacy [lm/W]:</b>         | 75         | <b>Warranty [years]:</b>         | 5   |
| <b>Energy efficiency class:</b>          | F          | <b>CE certificate:</b>           | <a href="#">354/2023</a>  |
| <b>Electrical protection class:</b>      | II         | <b>Manual:</b>                   | <a href="#">Download PDF</a>  |
| <b>Colour rendering index:</b>           | >80        | <b>Plik LDT:</b>                 | <a href="#">Pobierz</a>   |

Card creation date: 31 August 2023

The company reserves the right to make design changes or upgrades in the presented product. Product data sheet does not constitute an offer. \* Parameter tolerance is +/- 10%

 This product is a subject to electric and electronic waste equipment regulations (WEEE).

 Certificate CE - Nr: 354/2023