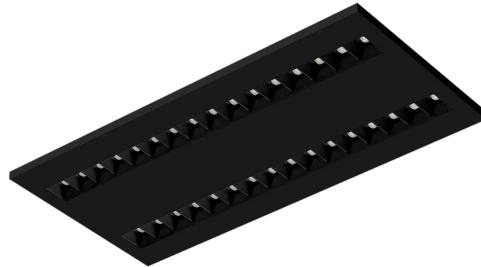


# TERRA 2 LED N 595X300MM X2 2400LM 830 BLACK MAT STRUCTURE (31W)

DETAILED CARD



## TECHNICAL PARAMETERS

<b>Index:</b>	237454
<b>Ingress protection:</b>	IP20
<b>Nominal power [W]:</b>	31
<b>Luminous flux [lm]*:</b>	2400
<b>Colour rendering index:</b>	>80
<b>SDCM:</b>	≤ 3
<b>Material of the body:</b>	powder coated steel
<b>Mounting version:</b>	surface
<b>Dimensions (H/W/T/S) [mm]:</b>	595/300/36
<b>Warranty [years]:</b>	5

## CHARACTERISTICS

LED luminaire with high total luminous Flux. Made of powder-coated white steel sheet. The luminaire has a patented HE reflector installed, which ensures efficiency and effectively eliminates glare. Available mounting versions: surface mounted, surface mounted on neodymium magnets (magnet ver. / N-MAG), flush-mounted in modular or KG ceilings (using an adapter) or suspended. In the surface-mounted version, solutions influencing the speed and safety of installation were used. In addition, the versions with neodymium magnets shorten the installation time of surface-mounted versions to an absolute minimum.

## APPLICATION

General purpose surface mounted luminaire for indoor application in offices or other utility rooms. Appropriate as the main light source even when the work requires eyesight concentration.

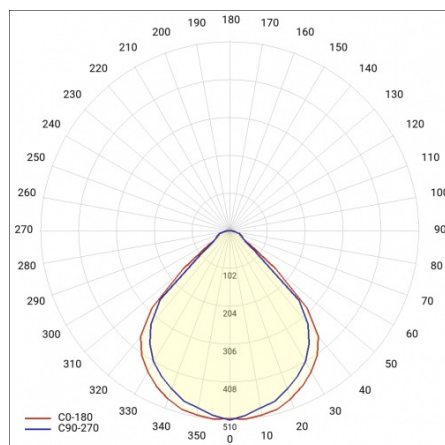
# TERRA 2 LED N 595X300MM X2 2400LM 830 BLACK MAT STRUCTURE (31W)

DETAILED CARD

## TECHNICAL PARAMETERS TABLE

Nominal power [W]:	31	Colour rendering index:	>80
Index:	237454	SDCM:	≤ 3
Colour temperature [K]:	3000	Power factor:	0.95
Light source:	LED module	Material of the body:	powder coated steel
Luminous flux [lm]:	2400	Ingress protection:	IP20
Optics:	black HE	Working temperature [°C]:	from -20 to +35
Rated power of the luminaire [W]:	34.20	Category type:	louvres
Version:	2x1	Category of application:	commercial facilities, educational institutions
Supply voltage [V]:	220-240	LED lifespan L70B50 [h]:	132000
Colour of the body:	black mat	LED lifespan L80B20 [h]:	84000
Frequency [Hz]:	50 - 60	LED lifespan L90B10 [h]:	42000
Dimensions (H/W/T/S) [mm]:	595/300/36	Photobiological safety:	Risk Group 1 (no photobiological hazard under normal behavioral limitation)
Mounting version:	surface	Warranty [years]:	5
Luminous efficacy [lm/W]:	70	CE certificate:	<a href="#">354/2023</a>
Energy efficiency class:	G	Manual:	<a href="#">Download PDF</a>
Electrical protection class:	II	Plik LDT:	<a href="#">Download</a>

## LIGHT CURVES



Card creation date: 03 March 2025

The company reserves the right to make design changes or upgrades in the presented product. Product data sheet does not constitute an offer. \* Parameter tolerance is +/- 10%



This product is a subject to electric and electronic waste equipment regulations (WEEE).



Certificate CE - Nr: 354/2023



Lena Lighting S.A.  
ul. Kórnicka 52, 63-000 Środa Wielkopolska  
tel. +48 61 28 60 333 (Pn-Pt, 8-16), e-mail: [hello@lenalighting.pl](mailto:hello@lenalighting.pl), [www.lenalighting.pl](http://www.lenalighting.pl)