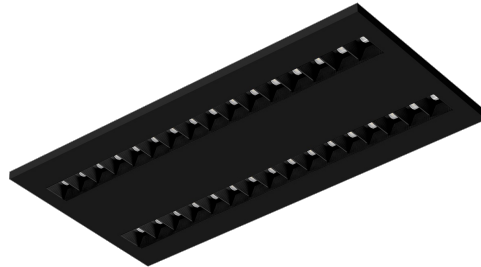


TERRA 2 LED N 595X300MM X2 1800LM 830 BLACK MAT STRUCTURE (20W)

DETAILED CARD



TECHNICAL PARAMETERS

| | |
|-----------------------------------|---------------------|
| Index: | 237423 |
| Ingress protection: | IP20 |
| Nominal power [W]: | 20 |
| Luminous flux [lm]*: | 1900 |
| Colour rendering index: | >80 |
| SDCM: | ≤ 3 |
| Material of the body: | powder coated steel |
| Mounting version: | surface |
| Dimensions (H/W/T/S) [mm]: | 595/300/36 |
| Warranty [years]: | 5 |

CHARACTERISTICS

LED luminaire with high total luminous Flux. Made of powder-coated white steel sheet. The luminaire has a patented HE reflector installed, which ensures efficiency and effectively eliminates glare. Available mounting versions: surface mounted, surface mounted on neodymium magnets (magnet ver. / N-MAG), flush-mounted in modular or KG ceilings (using an adapter) or suspended. In the surface-mounted version, solutions influencing the speed and safety of installation were used. In addition, the versions with neodymium magnets shorten the installation time of surface-mounted versions to an absolute minimum.

APPLICATION

General purpose surface mounted luminaire for indoor application in offices or other utility rooms. Appropriate as the main light source even when the work requires eyesight concentration.

TERRA 2 LED N 595X300MM X2 1800LM 830 BLACK MAT STRUCTURE (20W)

DETAILED CARD

TECHNICAL PARAMETERS TABLE

| | | | |
|--|---------------------|-----------------------------------|---|
| Index: | 237423 | Colour of the body: | black mat |
| Light source: | LED module | Dimensions (H/W/T/S) [mm]: | 595/300/36 |
| Nominal power [W]: | 20 | Ingress protection: | IP20 |
| Rated power of the luminaire [W]: | 22.70 | Mounting version: | surface |
| Supply voltage [V]: | 220-240 | Working temperature [°C]: | from -20 to +35 |
| Frequency [Hz]: | 50 - 60 | Category type: | louvres |
| Luminous flux [lm]: | 1900 | Category of application: | commercial facilities, educational institutions |
| Luminous efficacy [lm/W]: | 84 | Version: | 2x1 |
| Energy efficiency class: | F | LED lifespan L70B50 [h]: | 132000 |
| Electrical protection class: | II | LED lifespan L80B20 [h]: | 84000 |
| Colour temperature [K]: | 3000 | LED lifespan L90B10 [h]: | 42000 |
| Colour rendering index: | >80 | Photobiological safety: | Risk Group 1 (no photobiological hazard under normal behavioral limitation) |
| SDCM: | ≤ 3 | Warranty [years]: | 5 |
| Power factor: | 0.95 | CE certificate: | 354/2023 |
| Optics: | black HE | Manual: | Download PDF |
| Material of the body: | powder coated steel | | |

Card creation date: 31 August 2023

The company reserves the right to make design changes or upgrades in the presented product. Product data sheet does not constitute an offer. * Parameter tolerance is +/- 10%



This product is a subject to electric and electronic waste equipment regulations (WEEE).



Certificate CE - Nr: 354/2023