

# DIONE LED PLUS ASYMMETRIC DP 2300-3200LM 840 IP65 I KL. RCR OPAL WHITE MULTI LED

DETAILED CARD



## TECHNICAL PARAMETERS

<b>Ingress protection:</b>	IP65
<b>Impact resistance:</b>	IK10
<b>Nominal power [W] - range:</b>	21/27/32
<b>Colour temperature [K]:</b>	4000
<b>Luminous flux of the luminaire [lm] - range:</b>	2300/2800/3200
<b>SDCM:</b>	≤ 3
<b>Energy efficiency class:</b>	E
<b>Material of the body:</b>	ABS
<b>Ring material:</b>	ABS
<b>Diffuser material:</b>	PC

## CHARACTERISTICS

Designed from scratch surface mounted, round LED luminaire with integrated, energy saving LED panel. The fitting introduces new solutions to improve the light distribution and balance of the temperatures. It is characterized by high lighting efficiency and very high IP65 ingress protection. Specially profiled diffuser made of vandal-resistant PC allows to keep the highest degree of impact resistance IK10. It uses a number of proven solutions affecting the speed and ease of the assembly (suspension kit for the diffuser, readiness for through wiring) and component security: diffuser integrated with LED panel. Also available is a body made of ASA material, with excellent UV resistance, suitable for outdoor use. The ceiling ring is used to cover the gap between the luminaire and the surface on which it is mounted. The accessory can be used in prison cells.

Luminaires of the PLUS variant line are fitted with branded components of recognized global manufacturers. It features extended life and warranty, increased light efficiency and optimal use of electricity (Power Factor).

The MULTI luminaire version allows individual configuration: thanks to the built-in micoswitch, it is possible to choose one of three settings (nominal power of the fitting [W] / luminous flux of the fitting [lm]).

## APPLICATION

Surface-mounted wall or ceiling luminaire intended for indoor use (utility rooms, staircases, circulation routes) or outdoor. It is also available in a version with an RF motion detector which is especially recommended for use in spaces open to the public.

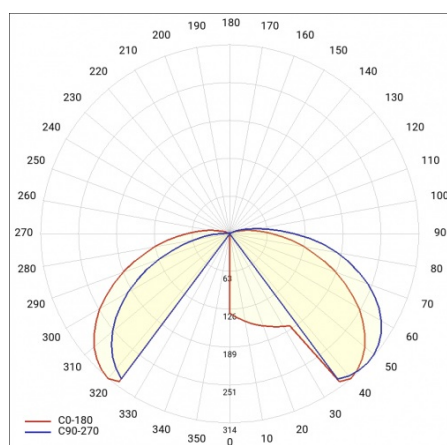
# DIONE LED PLUS ASYMMETRIC DP 2300-3200LM 840 IP65 I KL. RCR OPAL WHITE MULTI LED

DETAILED CARD

## TECHNICAL PARAMETERS TABLE

Nominal power [W] - range:	21/27/32	Dimensions (H/W/T/S) [mm]:	340/115
Index:	952388	Mounting dimensions [mm]:	140
Luminous flux of the luminaire [lm] - range:	2300/2800/3200	Impact resistance:	IK10
Light source:	LED module	Ingress protection:	IP65
Colour temperature [K]:	4000	Mounting version:	surface
Supply voltage [V]:	220-240	Working temperature [°C]:	from -20 to +35
Frequency [Hz]:	50 - 60	Dimensions of single box [mm]:	340/340/115
Diffuser type:	OPAL	Net weight [kg]:	1.150
Energy efficiency class:	E	Warranty [years]:	5
Motion sensor:	yes	Permeability factor of the diffuser:	0.73
Electrical protection class:	I	Category type:	bulkheads
Colour rendering index:	>80	Category of application:	commercial facilities, educational institutions
SDCM:	≤ 3	AC voltage range [V]:	198-264
Power factor:	0.93	LED lifespan L70B50 [h]:	115000
Beam angle [°]:	120	LED lifespan L80B20 [h]:	75000
Surge protection [kV]:	1	LED lifespan L90B10 [h]:	33000
Diffuser material:	PC	Version:	DP painted diffuser
Diffuser colour:	white	Light distribution type:	asymmetric
Material of the body:	ABS	Photobiological safety:	Risk Group 1 (no photobiological hazard under normal behavioral limitation)
Colour of the body:	white	Manual:	<a href="#">Download PDF</a>
Ring material:	ABS	CE certificate:	<a href="#">381/2023</a>
Ring colour:	white	PZH certificate:	<a href="#">B-BK-60212-0619/20</a>
		Plik LDT:	<a href="#">Download</a>

## LIGHT CURVES



# DIONE LED PLUS ASYMMETRIC DP 2300-3200LM 840 IP65 I KL. RCR OPAL WHITE MULTI LED

DETAILED CARD

## ACCESSORIES AVAILABLE

index	Name
120DL118	Ceiling ring Dione LED steel 1.5 white matt RAL 9003 painted vandal resistant



Ceiling ring Dione LED steel 1.5 white matt RAL 9003 painted vandal resistant (120DL118)

Card creation date: 10 January 2025

The company reserves the right to make design changes or upgrades in the presented product. Product data sheet does not constitute an offer. \* Parameter tolerance is +/- 10%



This product is a subject to electric and electronic waste equipment regulations (WEEE).



Certificate CE - Nr: 381/2023