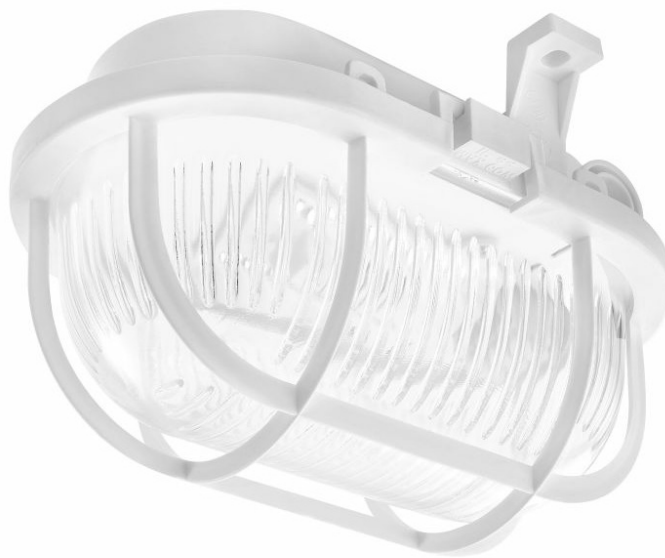


# OVAL LED EVO HV 170MM 590LM 840 S.TWORZYWO POPIEL KLOSZ SZKLANY (5W)

DETAILED CARD



## TECHNICAL PARAMETERS

<b>Index:</b>	911279
<b>Ingress protection:</b>	IP44
<b>Impact resistance:</b>	IK06
<b>Nominal power [W]:</b>	5
<b>Luminous flux [lm]*:</b>	590
<b>Colour temperature [K]:</b>	4000
<b>SDCM:</b>	≤ 4
<b>Energy efficiency class:</b>	E
<b>Material of the body:</b>	PP
<b>Diffuser material:</b>	glass

## CHARACTERISTICS

Surface mounted, LED luminaire, with an integrated energy-efficient LED GO! panel that provides high luminous efficacy and high ingress protection class of IP44 (wall assembly) and IP40 (ceiling assembly). The base is made of polypropylene and the diffuser is made of glass or polycarbonate. Characteristics: color temperature 3000K, 4000K; CRI> 80; durability of LED panels 50,000 hours (L70B50) ta = 25 ° C

## APPLICATION

Surface mounted luminaire with plastic or metal grid for mounting on ceilings and walls; intended for indoor use (rooms with high humidity, passageways and staircases, sewers and basements) as well as outdoor use (industrial facade lighting, parking lots).

# OVAL LED EVO HV 170MM 590LM 840 S.TWORZYWO POPIEL KLOSZ SZKLANY (5W)

DETAILED CARD

## TECHNICAL PARAMETERS TABLE

Nominal power [W]:	5	Dimensions (H/W/T/S) [mm]:	170/125/110
Light source:	LED module	Mounting dimensions [mm]:	110
Colour temperature [K]:	4000	Impact resistance:	IK06
Luminous flux [lm]:	590	Ingress protection:	IP44
Rated power of the luminaire [W]:	6.10	Mounting version:	surface
Supply voltage [V]:	220-240	Working temperature [°C]:	from 0 to +25
Diffuser type:	PRM	Net weight [kg]:	0.390
Frequency [Hz]:	50 - 60	CE certificate:	<a href="#">402/2023</a>
Colour of the body:	gray	Index:	911279
Luminous efficacy [lm/W]:	97	EAN:	5905963911279
Energy efficiency class:	E	Category type:	bulkheads
Electrical protection class:	I	Category of application:	parkings and bicycle paths
Colour rendering index:	>80	Version:	plastic grid
SDCM:	≤ 4	Luminaire rated power $P_{0min}$ [W]:	6.10
Power factor:	0.99	ETIM class:	EC001058
LED lifespan L70B50 [h]:	80 000	Photobiological safety:	Risk Group 1 (no photobiological hazard under normal behavioral limitation)
Beam angle [°]:	120	Warranty [years]:	3
Diffuser material:	glass	Manual:	<a href="#">Download PDF</a>
Material of the body:	PP		

Card creation date: 14 February 2020

The company reserves the right to make design changes or upgrades in the presented product. Product data sheet does not constitute an offer. \* Parameter tolerance is +/- 10%



This product is a subject to electric and electronic waste equipment regulations (WEEE).



Certificate CE - Nr: 402/2023