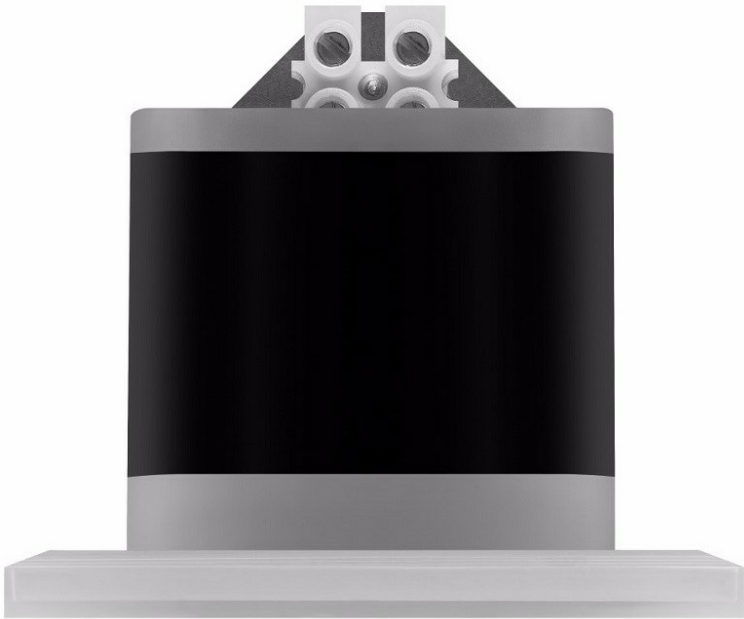


UP LED AS 2W 3000K FOR MOUNTING IN AN ELECTRICAL BOX

DETAILED CARD



TECHNICAL PARAMETERS

Index:	903038
Ingress protection:	IP20
Impact resistance:	IK07
Nominal power [W]:	2
Luminous flux [lm]*:	240
Colour temperature [K]:	3000
Colour rendering index:	>80
SDCM:	≤ 3
Energy efficiency class:	D
Material of the body:	plastic

CHARACTERISTICS

Energy-saving, outdoor 2W accent fitting provides economical and long-term operation without replacing light sources. Dustproof and waterproof luminaire with an ingress protection class of IP65, protected against dust and water splashing from a nozzle directed at any angle. Available with asymmetrical light distribution. Specification: color temperature of the LED light source: 3000K, 4000K.

APPLICATION

Outdoor luminaire intended to illuminate facades, stairs, alcoves, pillars and greenery in gardens, parks and recreational facilities.

UP LED AS 2W 3000K FOR MOUNTING IN AN ELECTRICAL BOX

DETAILED CARD

TECHNICAL PARAMETERS TABLE

Light source:	LED module	Material of the body:	plastic
Nominal power [W]:	2	Dimensions (H/W/T/S) [mm]:	70/70/50
Rated power of the luminaire [W]:	2	Mounting dimensions [mm]:	70/70/50
Supply voltage [V]:	220-240	Impact resistance:	IK07
Frequency [Hz]:	50 - 60	Ingress protection:	IP20
Luminous flux [lm]:	240	Mounting version:	electric box
Luminous efficacy [lm/W]:	120	Working temperature [°C]:	from -20 to +35
Energy efficiency class:	D	Net weight [kg]:	0.230
Electrical protection class:	II	CE certificate:	187/2023
Colour temperature [K]:	3000	Warranty [years]:	2
Colour rendering index:	>80	Index:	903038
SDCM:	≤ 3	EAN:	5905963903038
LED lifespan L70B50 [h]:	50000	Category type:	accent lighting
Beam angle [°]:	60	ETIM class:	EC001744
Diffuser material:	PC	Photobiological safety:	Risk Group 1 (no photobiological hazard under normal behavioral limitation)
Diffuser type:	PRM	Manual:	Download PDF

LIGHT CURVES

