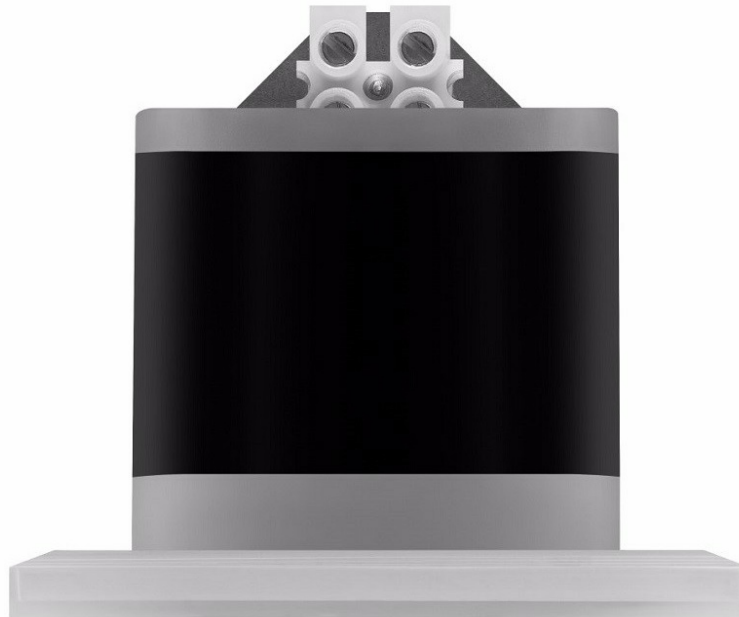


# UP LED AS 2W 4000K FOR MOUNTING IN AN ELECTRICAL BOX

DETAILED CARD



## TECHNICAL PARAMETERS

|                                 |         |
|---------------------------------|---------|
| <b>Index:</b>                   | 903021  |
| <b>Ingress protection:</b>      | IP20    |
| <b>Impact resistance:</b>       | IK07    |
| <b>Nominal power [W]:</b>       | 2       |
| <b>Luminous flux [lm]*:</b>     | 220     |
| <b>Colour temperature [K]:</b>  | 4000    |
| <b>Colour rendering index:</b>  | >80     |
| <b>SDCM:</b>                    | ≤ 3     |
| <b>Energy efficiency class:</b> | E       |
| <b>Material of the body:</b>    | plastic |

## CHARACTERISTICS

Energy-saving, outdoor 2W accent fitting provides economical and long-term operation without replacing light sources. Dustproof and waterproof luminaire with an ingress protection class of IP65, protected against dust and water splashing from a nozzle directed at any angle. Available with asymmetrical light distribution. Specification: color temperature of the LED light source: 3000K, 4000K.

## APPLICATION

Outdoor luminaire intended to illuminate facades, stairs, alcoves, pillars and greenery in gardens, parks and recreational facilities.

# UP LED AS 2W 4000K FOR MOUNTING IN AN ELECTRICAL BOX

DETAILED CARD

## TECHNICAL PARAMETERS TABLE

|                                   |            |                           |                                                                             |
|-----------------------------------|------------|---------------------------|-----------------------------------------------------------------------------|
| Nominal power [W]:                | 2          | Beam angle [°]:           | 60                                                                          |
| Light source:                     | LED module | Diffuser material:        | PC                                                                          |
| Colour temperature [K]:           | 4000       | Material of the body:     | plastic                                                                     |
| Luminous flux [lm]:               | 220        | Mounting dimensions [mm]: | 70/70/50                                                                    |
| Rated power of the luminaire [W]: | 2          | Mounting version:         | electric box                                                                |
| Diffuser type:                    | PRM        | Working temperature [°C]: | from -20 to +35                                                             |
| Supply voltage [V]:               | 220-240    | Net weight [kg]:          | 0.230                                                                       |
| Ingress protection:               | IP20       | CE certificate:           | <a href="#">187/2023</a>                                                    |
| Frequency [Hz]:                   | 50 - 60    | Index:                    | 903021                                                                      |
| Impact resistance:                | IK07       | Warranty [years]:         | 2                                                                           |
| Dimensions (H/W/T/S) [mm]:        | 70/70/50   | EAN:                      | 5905963903021                                                               |
| Luminous efficacy [lm/W]:         | 110        | Category type:            | accent lighting                                                             |
| Energy efficiency class:          | E          | ETIM class:               | EC001744                                                                    |
| Electrical protection class:      | II         | Photobiological safety:   | Risk Group 1 (no photobiological hazard under normal behavioral limitation) |
| Colour rendering index:           | >80        | Manual:                   | <a href="#">Download PDF</a>                                                |
| SDCM:                             | ≤ 3        | Plik LDT:                 | <a href="#">Pobierz</a>                                                     |
| LED lifespan L70B50 [h]:          | 50000      |                           |                                                                             |

Card creation date: 18 April 2021

The company reserves the right to make design changes or upgrades in the presented product. Product data sheet does not constitute an offer. \* Parameter tolerance is +/- 10%



This product is a subject to electric and electronic waste equipment regulations (WEEE).



Certificate CE - Nr: 187/2023