

TYTAN LED PRO 1450MM 12000LM 840 IP66 (70W) LS2

DETAILED CARD



TECHNICAL PARAMETERS

Index:	389368
Ingress protection:	IP66
Impact resistance:	IK09
Nominal power [W]:	70
Luminous flux [lm]*:	12000
Colour temperature [K]:	4000
Colour rendering index:	80
SDCM:	≤ 3
Energy efficiency class:	B
Material of the body:	PC

CHARACTERISTICS

TYTAN LED PRO is a fitting from NEXT GEN line, which is a new generation of fittings in LED technology. The fitting, designed from scratch, allows new solutions improving the light distribution and temperature balance. Branded LED diodes and new LED modules have influence on a very high luminous efficacy: up to 178 lm/W. It guarantees the best required lighting level and energy saving. The solution based on integration of the diffuser and LED panel is applied in the fitting. The fitting has a lot of facilities making the mounting easier and faster: the system of diffuser suspension, adjustable mounting brackets ensuring the mounting tolerance +/-50mm. Standard equipment of the fitting: clips made of stainless steel (INOX). Motion sensor mounting height: up to 5 meters.

APPLICATION

The multifunctional LED lamp is designed for use in areas with high requirements for dust and water resistance. Especially recommended for lighting public facilities, including hospitals, educational facilities, halls, garages, passages, warehouses, shops, food industry, commercial and industrial facilities (factories, laboratories), warehouses, parking lots (underground and multi-level) , sports stadiums, transport terminals and underground passages. The luminaire is ideal for new lighting applications as well as replacing traditional fluorescent luminaires with energy-saving LED solutions. Its design is adapted for surface and suspended mounting.

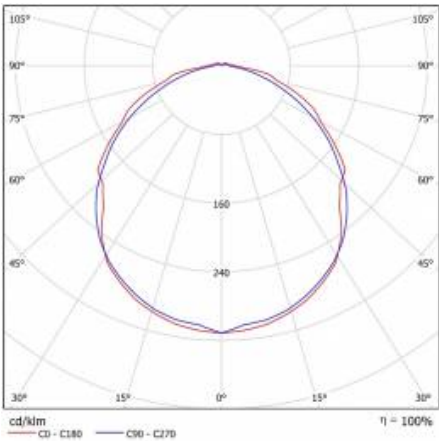
TYTAN LED PRO 1450MM 12000LM 840 IP66 (70W) LS2

DETAILED CARD

TECHNICAL PARAMETERS TABLE

Index:	389368	Material of the body:	PC
EAN:	5905963389368	Colour of the body:	grey
Light source:	LED module	Dimensions (H/W/T/S) [mm]:	1432/85/80
Nominal power [W]:	70	Impact resistance:	IK09
Rated power of the luminaire [W]:	75.40	Ingress protection:	IP66
Frequency [Hz]:	50 - 60	Mounting version:	surface, suspended
Luminous flux [lm]:	12000	Working temperature [°C]:	from -20 to +35
Luminous efficacy [lm/W]:	159	Through wiring:	LS2
Energy efficiency class:	B	Warranty [years]:	5
Electrical protection class:	I	Mark D:	yes
Colour temperature [K]:	4000	AC voltage range [V]:	220 - 240
Colour rendering index:	80	Photobiological safety:	RG0 - exempt (no photobiological hazard)
SDCM:	≤ 3	ETIM class:	EC000109
Power factor:	0.98	Net weight [kg]:	1.940
LED lifespan L70B50 [h]:	156000	Warranty [years]:	5
LED lifespan L80B20 [h]:	100000	CE certificate:	79/2023
LED lifespan L90B10 [h]:	47000	PZH certificate:	B-BK-60212-0152/20
Exchangeable source:	yes	HACCP:	852/2004
Diffuser material:	PC	Manual:	Download PDF
Diffuser type:	matt	ENEC Certificate:	0310/ENEC/23
Diffuser colour:	white	Plik LDT:	Download
Optics material:	PC		

LIGHT CURVES



TYTAN LED PRO 1450MM 12000LM 840 IP66 (70W) LS2

DETAILED CARD

TECHNICAL DETAILS



regulowane uchwyty / adjustable
handles / einstellbare Halterungen



system zwieszania klosza / suspension
system of the diffuser / hängende
Diffusor



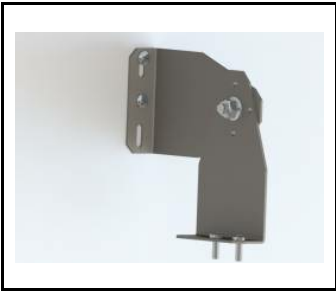
wybór miejsca zasilania / choosing a
place of power supply /
Stromversorgungsanschluss von
mehreren Seite möglich

TYTAN LED PRO 1450MM 12000LM 840 IP66 (70W) LS2

DETAILED CARD

ACCESSORIES AVAILABLE

index	Name
908200	TYTAN LED. ATLAS LED. INDUSTRY LED - adjustable handle (set of 2)
907913	TYTAN LED. ATLAS LED - protective grid 1152mm
907920	TYTAN LED. ATLAS LED - protective grid 1432mm
16000507	Breathable gland gray M20*1.5 IP68
358937	TYTAN MULTI LED 1150mm 2500-4300lm 840 - lighting module
358944	TYTAN MULTI LED 1150mm 5000-8700lm 840 - lighting module
358951	TYTAN MULTI LED 1450mm 3150-5450lm 840 - lighting module
60000006	M16 stuffing box plug various PA black M-16 - BPM-21
80000279	Gland. beam, Codar, soft polyvinyl chloride (PVC-P), gray



TYTAN LED. ATLAS LED. INDUSTRY LED - adjustable handle (set of 2) (908200)



TYTAN LED. ATLAS LED - protective grid 1152mm (907913)



TYTAN LED. ATLAS LED - protective grid 1432mm (907920)



Breathable gland gray M20*1.5 IP68 (16000507)



TYTAN MULTI LED 1150mm 2500-4300lm 840 - lighting module (358937)



TYTAN MULTI LED 1150mm 5000-8700lm 840 - lighting module (358944)



TYTAN MULTI LED 1450mm 3150-5450lm 840 - lighting module (358951)



M16 stuffing box plug various PA black M-16 - BPM-21 (60000006)

Card creation date: 08 January 2025

The company reserves the right to make design changes or upgrades in the presented product. Product data sheet does not constitute an offer. * Parameter tolerance is +/- 10%

 This product is a subject to electric and electronic waste equipment regulations (WEEE).

 Certificate CE - Nr: 79/2023