

TUBE LED EVO 2 DALI 36W 4000K LS2 30 NARROW BEAM

DETAILED CARD



TECHNICAL PARAMETERS

Ingress protection:	IP65
Impact resistance:	IK08
Nominal power [W]:	36
Luminous flux [lm]*:	3350
Colour temperature [K]:	4000
Colour rendering index:	>80
SDCM:	≤ 3
Energy efficiency class:	F
Material of the body:	PC
Diffuser type:	transparent

CHARACTERISTICS

LED luminaire system designed for suspended and surface mounting on walls and ceilings. Provides a combination of high illumination parameters and functionality. With its slim diameter of 42 mm possible to mount in hard-to-reach locations. Mounting is easy and quick. Due to the line lens, it is possible to adjust the fitting to different lighting requirements – three light distribution options: 90°, 60°, 30°.

APPLICATION

Luminaire intended for both outdoor and indoor use in industry areas and passageways. Provides good surface lighting and is perfect in situations that require eyesight concentration. Four housing sizes available. Suitable for mounting in all types of suspended ceilings (modular, plasterboard).

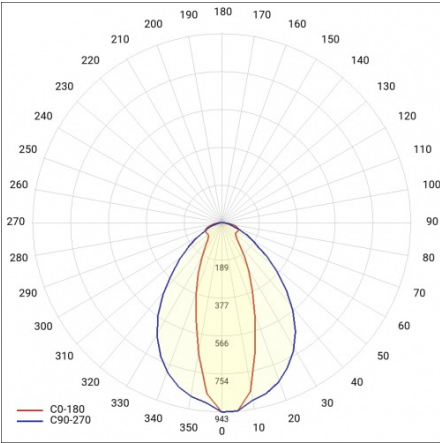
TUBE LED EVO 2 DALI 36W 4000K LS2 30 NARROW BEAM

DETAILED CARD

TECHNICAL PARAMETERS TABLE

Nominal power [W]:	36	LED lifespan L70B50 [h]:	50000
Light source:	LED module	Optics material:	PMMA
Colour temperature [K]:	4000	Optics:	lens
Luminous flux [lm]:	3350	Material of the body:	PC
Rated power of the luminaire [W]:	40	Colour of the body:	silver
Diffuser type:	transparent	Mounting dimensions [mm]:	1608
Supply voltage [V]:	220-240	Impact resistance:	IK08
Beam angle [°]:	30	Ingress protection:	IP65
Frequency [Hz]:	50 - 60	Mounting version:	surface, suspended
DIMM DALI:	yes	Net weight [kg]:	1.600
Through wiring:	LS2	Warranty [years]:	5
Luminous efficacy [lm/W]:	93	CE certificate:	226/2023
Dimensions (H/W/T/S) [mm]:	42/45/1626	Index:	267819
Energy efficiency class:	F	EAN:	5905963267819
Electrical protection class:	I	Category type:	battens
Colour rendering index:	>80	Warranty [years]:	5
SDCM:	≤ 3	Manual:	Download PDF
Power factor:	0.92	Plik LDT:	Download

LIGHT CURVES

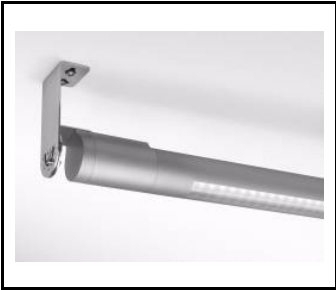


TUBE LED EVO 2 DALI 36W 4000K LS2 30 NARROW BEAM

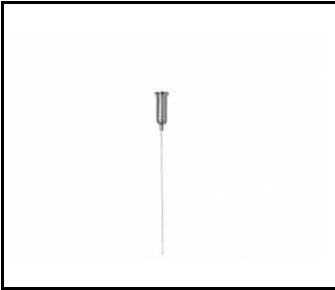
DETAILED CARD

ACCESSORIES AVAILABLE

index	Name
267604	Tube LED EVO surface mounting bracket adjustable +/- 100 degrees
266591	Tube LED EVO electric suspension
266607	Tube LED EVO suspension cord
266829	Tube LED EVO Suspension (round box)
266492	Star connector TUBE LED EVO system
266485	Star connector TUBE LED EVO system matt white
266478	Star connector TUBE LED EVO system matt black



Tube LED EVO surface mounting bracket adjustable +/- 100 degrees (267604)



Tube LED EVO suspension cord (266607)



Star connector TUBE LED EVO system (266492)

Card creation date: 28 May 2020

The company reserves the right to make design changes or upgrades in the presented product. Product data sheet does not constitute an offer. * Parameter tolerance is +/- 10%

 This product is a subject to electric and electronic waste equipment regulations (WEEE).

 Certificate CE - Nr: 226/2023