

MITRA LED 5050LM 3000K MAT IP66 II KL. (44W)

DETAILED CARD



TECHNICAL PARAMETERS

Light source:	LED module
Ingress protection:	IP66
Nominal power [W]:	44
Luminous flux [lm]*:	5050
Colour temperature [K]:	3000
SDCM:	≤ 3
Colour rendering index:	>80
Electrical protection class:	II
Energy efficiency class:	D
Material of the body:	PP+FG

CHARACTERISTICS

LED fitting with high luminous efficiency and an energy-saving, integrated LED panel. Body made of polypropylene (PP) with glass fiber (GF), aluminum handle and polycarbonate diffuser (PC).

The lamp is available in two versions of light distribution:

- general G1 - with a frosted diffuser,
- road RM1 - with a transparent diffuser and directional lens matrices made of PMMA.

IP66 ingress protection class and IK07 impact-rating features make this fitting shock-resistant (vandal-resistant). The integrated handle allows for top mounting to the pole. Colour of the body: gray (RAL 7010).

Standard equipped with:

- surge protection (SP10kV),
- H07RN-F cable with a length of 0.6 m and an IP66 quick connection.

APPLICATION

Fitting used in open spaces to lighten: streets, local roads, bicycle paths, alleys, pavements, car parks and squares. Installation and mounting: post-top mounting. Mounting grip integrated with the fitting.

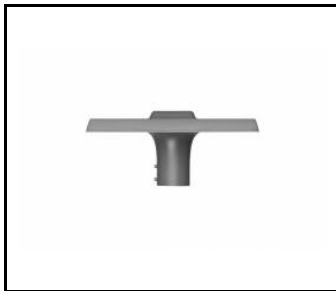
MITRA LED 5050LM 3000K MAT IP66 II KL. (44W)

DETAILED CARD

TECHNICAL PARAMETERS TABLE

Nominal power [W]:	44	Dimensions (H/W/T/S) [mm]:	398/398/175
Index:	956379	Mounting dimensions [mm]:	ø60
Colour temperature [K]:	3000	Ingress protection:	IP66
EAN:	5905963956379	Mounting version:	on the pole
Luminous flux [lm]:	5050	Working temperature [°C]:	from -15 to +35
Light source:	LED module	Diode size [mm]:	2835
Light distribution type:	G1	Dimensions of single box [mm]:	400/400/175
Rated power of the luminaire [W]:	43.70	Net weight [kg]:	1.900
Electrical protection class:	II	Warranty [years]:	5
Luminous efficacy [lm/W]:	118	Category type:	Park and city lighting
Energy efficiency class:	D	Category of application:	parkings and bicycle paths
Colour rendering index:	>80	Beam angle [°]:	50000
SDCM:	≤ 3	Gross weight [kg]:	1.900
Power factor:	0.98	Permeability factor of the diffuser:	0.80
LED lifespan L70B50 [h]:	90000	ETIM class:	ECO00062
Surge protection [kV]:	2	Photobiological safety:	Risk Group 1 (no photobiological hazard under normal behavioral limitation)
Diffuser material:	PC	ULOR:	0%
Diffuser type:	frozen	Warranty [years]:	5
Diffuser colour:	transparent	CE certificate:	38/2024
Material of the body:	PP+FG	Manual:	Download PDF
Colour of the body:	grey	Plik LDT:	

TECHNICAL DETAILS



MITRA LED



MITRA LED

Card creation date: 16 December 2021

The company reserves the right to make design changes or upgrades in the presented product. Product data sheet does not constitute an offer. * Parameter tolerance is +/- 10%

 This product is a subject to electric and electronic waste equipment regulations (WEEE).

 Certificate CE - Nr: 38/2024



Lena Lighting S.A.
ul. Kórnicka 52, 63-000 Środa Wielkopolska
tel. +48 61 28 60 333 (Pn-Pt, 8-16), e-mail: hello@lenalighting.pl, www.lenalighting.pl