

TYTAN LED BASIC 1450MM 10400LM 840 IP66 AW 3H 71W

DETAILED CARD



TECHNICAL PARAMETERS

| | |
|-------------------------|-------|
| Ingress protection: | IP66 |
| Impact resistance: | IK09 |
| Nominal power [W]: | 71 |
| Luminous flux [lm]*: | 10400 |
| Colour temperature [K]: | 4000 |
| Material of the body: | PC |
| Diffuser material: | PC |
| Diffuser type: | MAT |

CHARACTERISTICS

TYTAN LED BASIC is a basic line of lighting fixtures which provides an excellent alternative to traditional fluorescent lamps – it replaces lamps with the following power specifications: - 2x36W (39W - 5750lm), - 2x58W (49W - 7200lm). The lighting fixture has been designed from scratch. TYTAN LED BASIC includes new solutions which improve the light distribution and the temperature balance. The new LED modules ensure high luminous efficacy of >130 lm/W. This provides the required level of lighting along with significant energy savings. The lighting fixture includes many improvements which facilitate and speed up the installation process: a solution involving the integration of the diffuser with the LED panel, a diffuser suspension system, and adjustable mounting brackets with an installation tolerance of +/-40 mm. As a standard, the fixture is equipped with robust clips made of stainless steel (INOX). The body of the fixture and the diffuser are resistant to UV radiation.

Available versions:

- with RCR motion sensor (motion sensor mounting height: up to 5 meters)
- with DALI control system
- with LS2 straight through wiring

APPLICATION

The multifunctional LED lamp is designed for use in areas with high requirements for dust and water resistance. Especially recommended for lighting public facilities, including hospitals, educational facilities, halls, garages, passages, warehouses, shops, food industry, commercial and industrial facilities (factories, laboratories), warehouses, parking lots (underground and multi-level) , sports stadiums, transport terminals and underground passages. The luminaire is ideal for new lighting applications as well as replacing traditional fluorescent luminaires with energy-saving LED solutions. Its design is adapted for surface and suspended mounting.

TYTAN LED BASIC 1450MM 10400LM 840 IP66 AW 3H 71W

DETAILED CARD

TECHNICAL PARAMETERS TABLE

| | | | |
|-----------------------------------|---------------|----------------------------|---|
| Index: | 358500 | Dimensions (H/W/T/S) [mm]: | 1432/85/80 |
| EAN: | 5905963358500 | Mounting dimensions [mm]: | 960 |
| Light source: | LED module | Impact resistance: | IK09 |
| Nominal power [W]: | 71 | Ingress protection: | IP66 |
| Rated power of the luminaire [W]: | 74.50 | Mounting version: | surface, suspended |
| Supply voltage [V]: | 220-240 | Working temperature [°C]: | from 0 to +35 |
| Frequency [Hz]: | 50 - 60 | Emergency lighting [h]: | 3 |
| Luminous flux [lm]: | 10400 | Warranty [years]: | 2 / 0.5 (bateria) |
| Luminous efficacy [lm/W]: | 140 | Autotest: | yes |
| Energy efficiency class: | C | Operating mode: | M |
| Electrical protection class: | I | LED lifespan L70B50 [h]: | 70000 |
| Colour temperature [K]: | 4000 | LED lifespan L80B20 [h]: | 44000 |
| Power factor: | 0.98 | LED lifespan L90B10 [h]: | 21000 |
| Exchangeable source: | yes | Category type: | battens |
| Battery: | Li-Ion | Photobiological safety: | Risk Group 1 (no photobiological hazard under normal behavioral limitation) |
| Surge protection [kV]: | 2 | ETIM class: | EC000109 |
| Diffuser material: | PC | Warranty [years]: | 2 / 0.5 (battery) |
| Diffuser type: | MAT | CE certificate: | 54/2019 |
| Material of the body: | PC | HACCP: | 852/2004 |
| Colour of the body: | grey | Manual: | Download PDF |

LIGHT CURVES



TYTAN LED BASIC 1450MM 10400LM 840 IP66 AW 3H 71W

DETAILED CARD

TECHNICAL DETAILS



regulowane uchwyty / adjustable
handles / einstellbare Halterungen



system zwieszania klosza / suspension
system of the diffuser / hängende
Diffusor



wybór miejsca zasilania / choosing a
place of power supply /
Stromversorgungsanschluss von
mehreren Seite möglich

TYTAN LED BASIC 1450MM 10400LM 840 IP66 AW 3H 71W

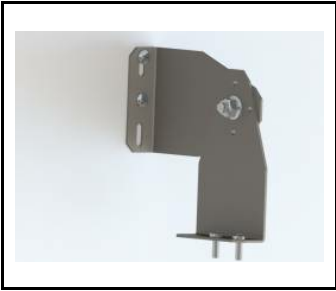
DETAILED CARD

ACCESSORIES AVAILABLE

| index | Name |
|----------|---|
| 908200 | TYTAN LED. ATLAS LED. INDUSTRY LED - adjustable handle (set of 2) |
| 907913 | TYTAN LED. ATLAS LED - protective grid 1152mm |
| 907920 | TYTAN LED. ATLAS LED - protective grid 1432mm |
| 358654 | TYTAN LED BASIC 1150mm 7100lm 840 - lighting module |
| 16000507 | Breathable gland gray M20*1.5 IP68 |
| 358647 | TYTAN LED BASIC 1150mm 5750lm 840 - lighting module |
| 358661 | TYTAN LED BASIC 1450mm 10400lm 840 - lighting module |
| 358671 | TYTAN LED BASIC 1450mm 7200lm 840 - lighting module |
| 60000006 | M16 stuffing box plug various PA black M-16 - BPM-21 |
| 80000378 | Cable gland PG 13.5 Titanium PA 6.6 gray with nut |
| 908231 | TYTAN LED - holder |
| 80000279 | Gland. beam, Codar, soft polyvinyl chloride (PVC-P), gray |

TYTAN LED BASIC 1450MM 10400LM 840 IP66 AW 3H 71W

DETAILED CARD



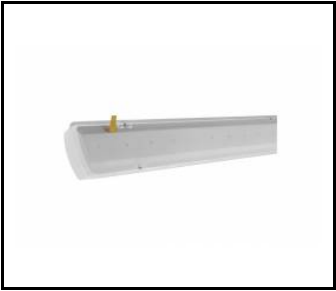
TYTAN LED. ATLAS LED. INDUSTRY LED - adjustable handle (set of 2) (908200)



TYTAN LED. ATLAS LED - protective grid 1152mm (907913)



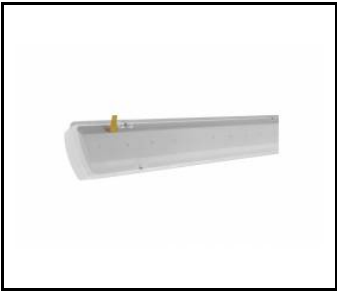
TYTAN LED. ATLAS LED - protective grid 1432mm (907920)



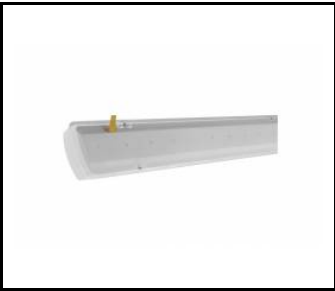
TYTAN LED BASIC 1150mm 7100lm 840 - lighting module (358654)



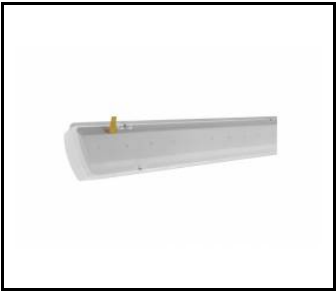
Breathable gland gray M20*1.5 IP68 (16000507)



TYTAN LED BASIC 1150mm 5750lm 840 - lighting module (358647)



TYTAN LED BASIC 1450mm 10400lm 840 - lighting module (358661)



TYTAN LED BASIC 1450mm 7200lm 840 - lighting module (358671)



M16 stuffing box plug various PA black M-16 - BPM-21 (60000006)

Card creation date: 11 March 2021

The company reserves the right to make design changes or upgrades in the presented product. Product data sheet does not constitute an offer. * Parameter tolerance is +/- 10%

 This product is a subject to electric and electronic waste equipment regulations (WEEE).

 Certificate CE - Nr: 54/2019