

TYTAN LED BASIC 1150MM 5750LM 840 IP66 LS2 39W

DETAILED CARD



TECHNICAL PARAMETERS

Ingress protection:	IP66
Impact resistance:	IK09
Nominal power [W]:	39
Luminous flux [lm]*:	5750 - 10400
Colour temperature [K]:	4000
Colour rendering index:	>80
SDCM:	≤ 3
Material of the body:	PC
Diffuser material:	PC
Diffuser type:	MAT

CHARACTERISTICS

TYTAN LED BASIC is a basic line of lighting fixtures which provides an excellent alternative to traditional fluorescent lamps – it replaces lamps with the following power specifications: - 2x36W (39W - 5750lm), - 2x58W (49W - 7200lm). The lighting fixture has been designed from scratch. TYTAN LED BASIC includes new solutions which improve the light distribution and the temperature balance. The new LED modules ensure high luminous efficacy of >130 lm/W. This provides the required level of lighting along with significant energy savings. The lighting fixture includes many improvements which facilitate and speed up the installation process: a solution involving the integration of the diffuser with the LED panel, a diffuser suspension system, and adjustable mounting brackets with an installation tolerance of +/-40 mm. As a standard, the fixture is equipped with robust clips made of stainless steel (INOX). The body of the fixture and the diffuser are resistant to UV radiation.

Available versions:

- with RCR motion sensor (motion sensor mounting height: up to 5 meters)
- with DALI control system
- with LS2 straight through wiring

APPLICATION

The multifunctional LED lamp is designed for use in areas with high requirements for dust and water resistance. Especially recommended for lighting public facilities, including hospitals, educational facilities, halls, garages, passages, warehouses, shops, food industry, commercial and industrial facilities (factories, laboratories), warehouses, parking lots (underground and multi-level), sports stadiums, transport terminals and underground passages. The luminaire is ideal for new lighting applications as well as replacing traditional fluorescent luminaires with energy-saving LED solutions. Its design is adapted for surface and suspended mounting.

TYTAN LED BASIC 1150MM 5750LM 840 IP66 LS2 39W

DETAILED CARD

TECHNICAL PARAMETERS TABLE

Index:	x	Mounting dimensions [mm]:	960
EAN:	x	Impact resistance:	IK09
Light source:	moduł LED	Ingress protection:	IP66
Nominal power [W]:	39	Mounting version:	natynkowy; natynkowy, zwieszany
Rated power of the luminaire [W]:	41.30; 50.90; 51.90; 74.50	Working temperature [°C]:	od -20 do +30; od -20 do +35; od 0 do +35
Supply voltage [V]:	220-240	Motion sensor:	yes
Frequency [Hz]:	50-60	Emergency lighting [h]:	3
Luminous flux [lm]:	5750 - 10400	DIMM DALI:	yes
Luminous efficacy [lm/W]:	139	Through wiring:	LS2
Energy efficiency class:	A+; A++	Warranty [years]:	2 / 0.5 (bateria); do 5 lat (pod warunkiem rejestracji na stronie lenalighting.pl); 3
Electrical protection class:	I	Autotest:	yes
Colour temperature [K]:	4000	Operating mode:	M
Colour rendering index:	>80	Dusk sensor:	yes
SDCM:	≤ 3	LED lifespan L70B50 [h]:	70000; 91000
Power factor:	0.95; 0.98	LED lifespan L80B20 [h]:	44000; 58000
Exchangeable source:	yes	LED lifespan L90B10 [h]:	21000; 28000
Battery:	Li-Ion; NiMh	Additional accessories:	siatka ochronna
Surge protection [kV]:	2	Category type:	battens
Diffuser material:	PC	Photobiological safety:	grupa ryzyka 1 (niskie ryzyko)
Diffuser type:	MAT	ETIM class:	EC000109
Material of the body:	PC	Warranty [years]:	2 / 0.5 (bateria); 5
Colour of the body:	szary	CE certificate:	54/2019
Dimensions (H/W/T/S) [mm]:	1152/85/80; 1432/85/80	Manual:	Pobierz PDF

LIGHT CURVES



TYTAN LED BASIC 1150MM 5750LM 840 IP66 LS2 39W

DETAILED CARD

TECHNICAL DETAILS



regulowane uchwyty / adjustable
handles / einstellbare Halterungen



system zwieszania klosza / suspension
system of the diffuser / hängende
Diffusor



wybór miejsca zasilania / choosing a
place of power supply /
Stromversorgungsanschluss von
mehreren Seite möglich

TYTAN LED BASIC 1150MM 5750LM 840 IP66 LS2 39W

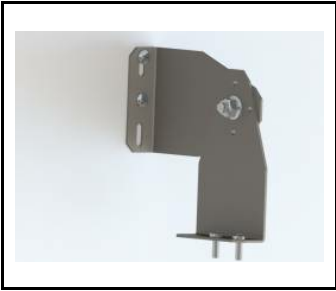
DETAILED CARD

ACCESSORIES AVAILABLE

index	Name
908200	TYTAN LED. ATLAS LED. INDUSTRY LED - adjustable handle (set of 2)
907913	TYTAN LED. ATLAS LED - protective grid 1152mm
907920	TYTAN LED. ATLAS LED - protective grid 1432mm
358654	TYTAN LED BASIC 1150mm 7100lm 840 - lighting module
16000507	Breathable gland gray M20*1.5 IP68
358647	TYTAN LED BASIC 1150mm 5750lm 840 - lighting module
358661	TYTAN LED BASIC 1450mm 10400lm 840 - lighting module
358671	TYTAN LED BASIC 1450mm 7200lm 840 - lighting module
60000006	M16 stuffing box plug various PA black M-16 - BPM-21
80000378	Cable gland PG 13.5 Titanium PA 6.6 gray with nut
908231	TYTAN LED - holder
80000279	Gland. beam, Codar, soft polyvinyl chloride (PVC-P), gray

TYTAN LED BASIC 1150MM 5750LM 840 IP66 LS2 39W

DETAILED CARD



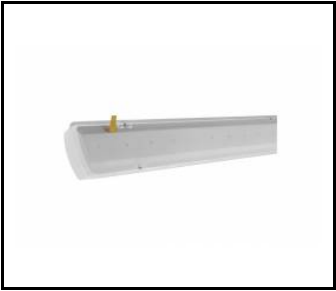
TYTAN LED. ATLAS LED. INDUSTRY LED - adjustable handle (set of 2) (908200)



TYTAN LED. ATLAS LED - protective grid 1152mm (907913)



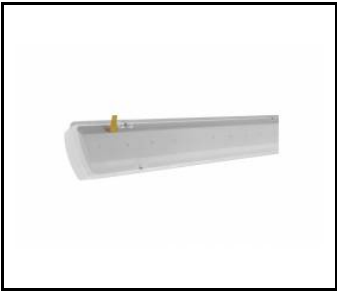
TYTAN LED. ATLAS LED - protective grid 1432mm (907920)



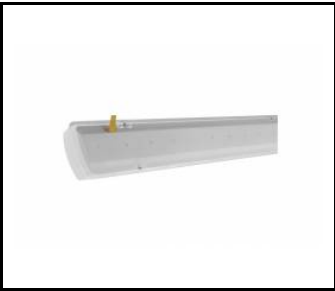
TYTAN LED BASIC 1150mm 7100lm 840 - lighting module (358654)



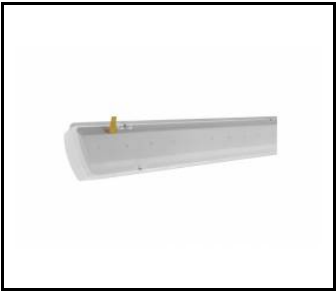
Breathable gland gray M20*1.5 IP68 (16000507)



TYTAN LED BASIC 1150mm 5750lm 840 - lighting module (358647)



TYTAN LED BASIC 1450mm 10400lm 840 - lighting module (358661)



TYTAN LED BASIC 1450mm 7200lm 840 - lighting module (358671)



M16 stuffing box plug various PA black M-16 - BPM-21 (60000006)

Card creation date: 11 March 2021

The company reserves the right to make design changes or upgrades in the presented product. Product data sheet does not constitute an offer. * Parameter tolerance is +/- 10%

 This product is a subject to electric and electronic waste equipment regulations (WEEE).

 Certificate CE - Nr: 54/2019